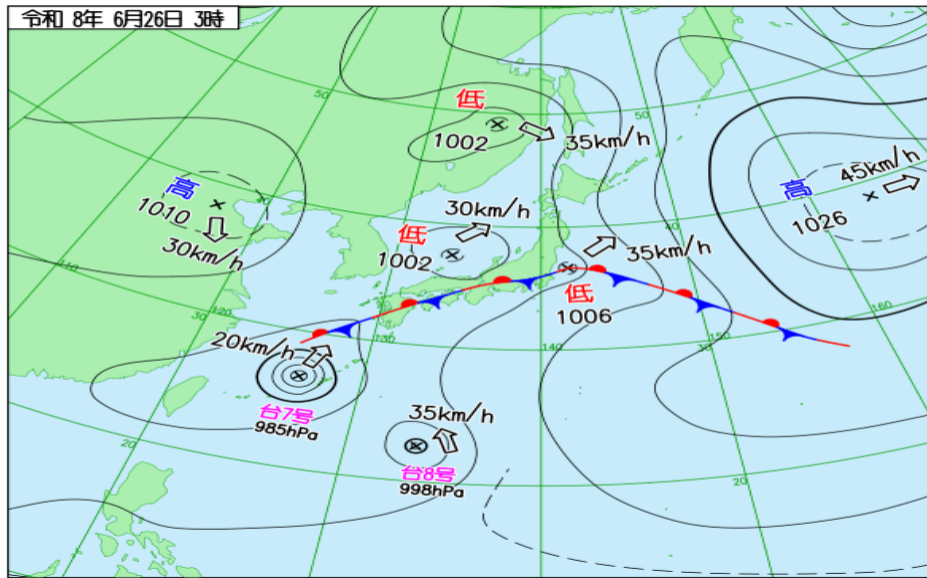
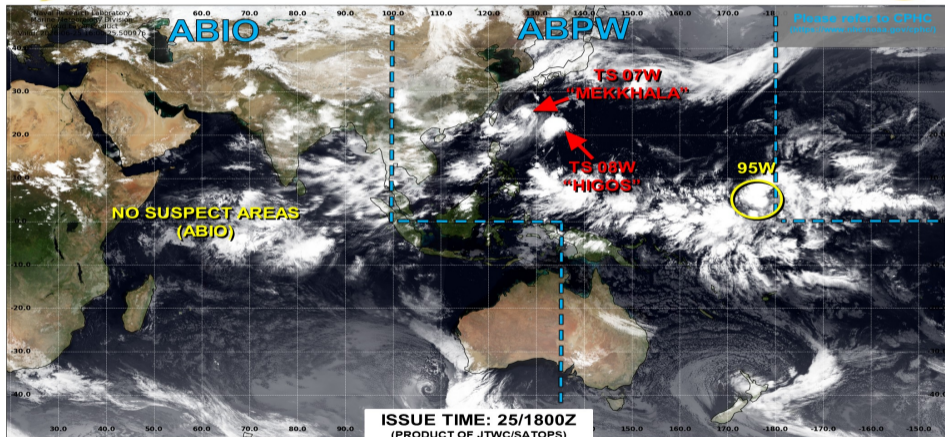


JMA 日本域実況天気図 06/25 18Z





JOINT TYPHOON WARNING CENTER



LOW

TC development unlikely within 24 hours

MEDIUM

TC development likely, but expected to occur beyond 24 hours

HIGH

TC development likely within 24 hours (Reference TCFA)

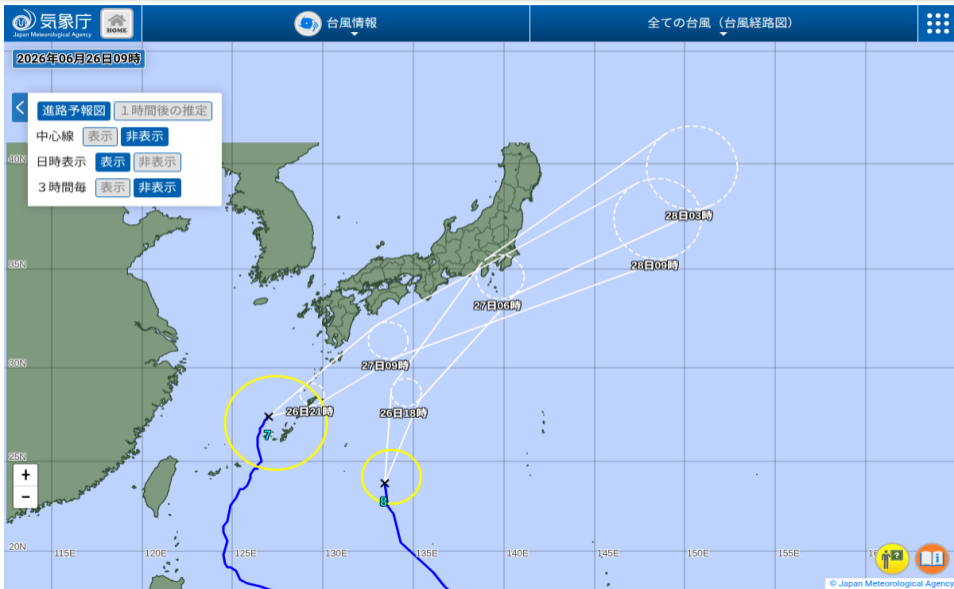
SUB TROPICAL

Monitoring for potential transition to TC. Invest label color denotes tropical transition probability

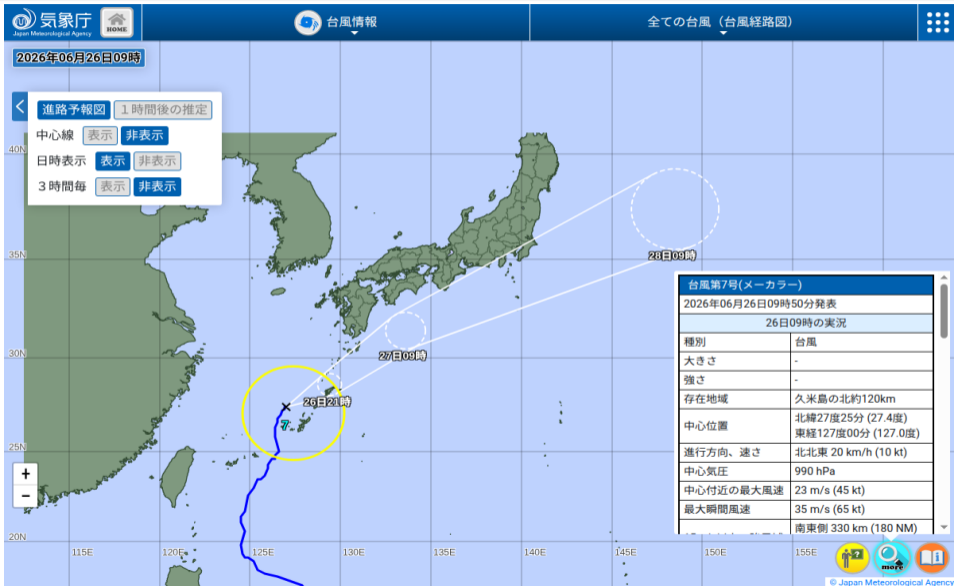


Tropical Cyclone (Reference Warning)

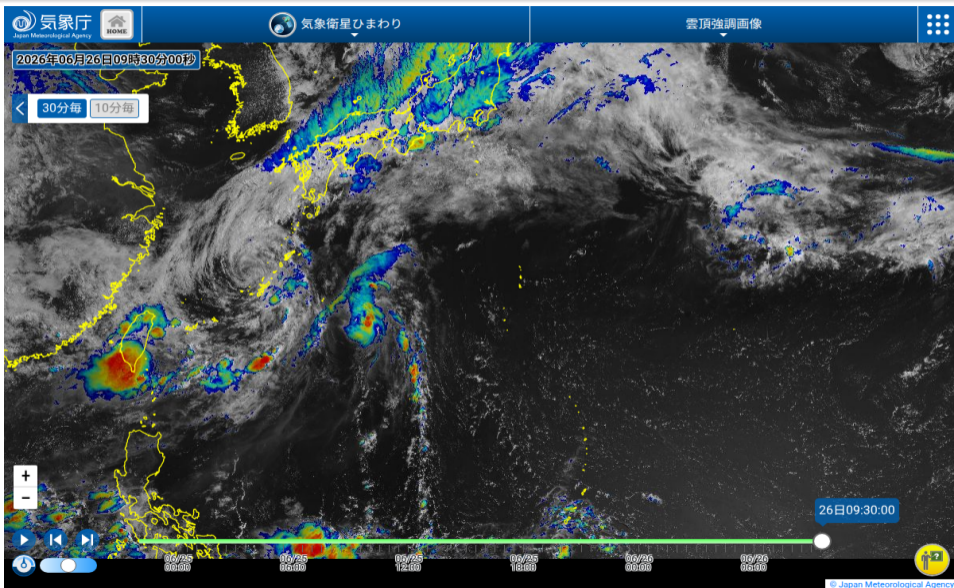
JMA 台風実況



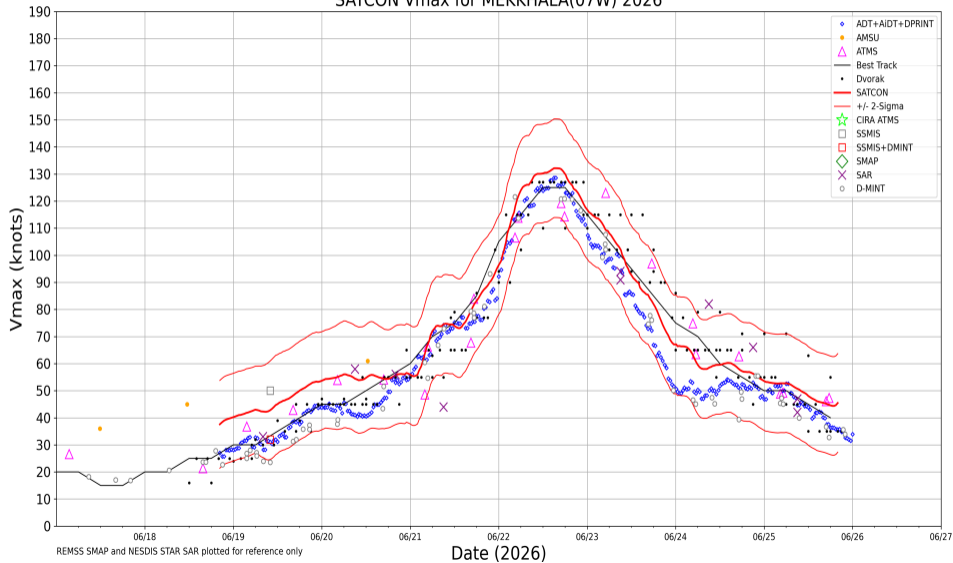
JMA 台風実況



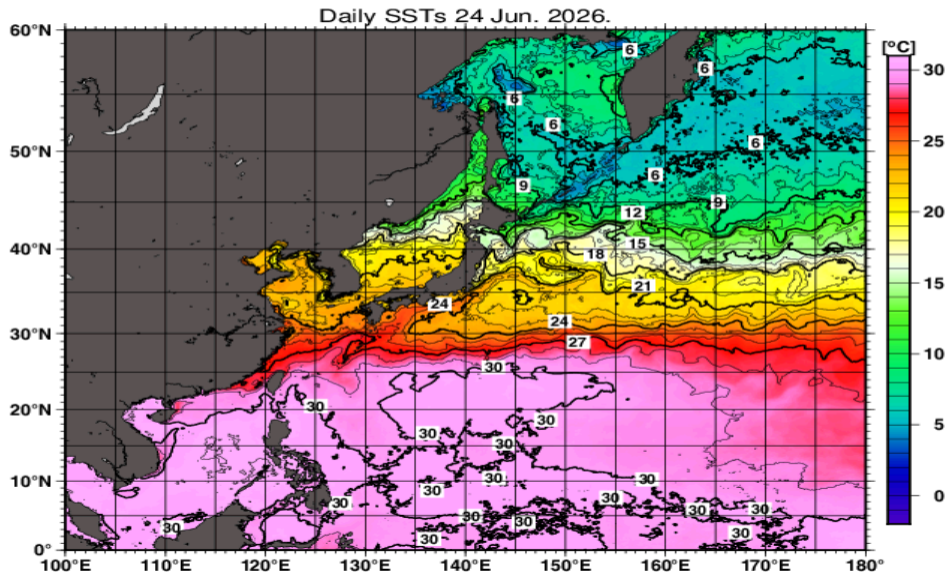
ひまわり雲頂強調



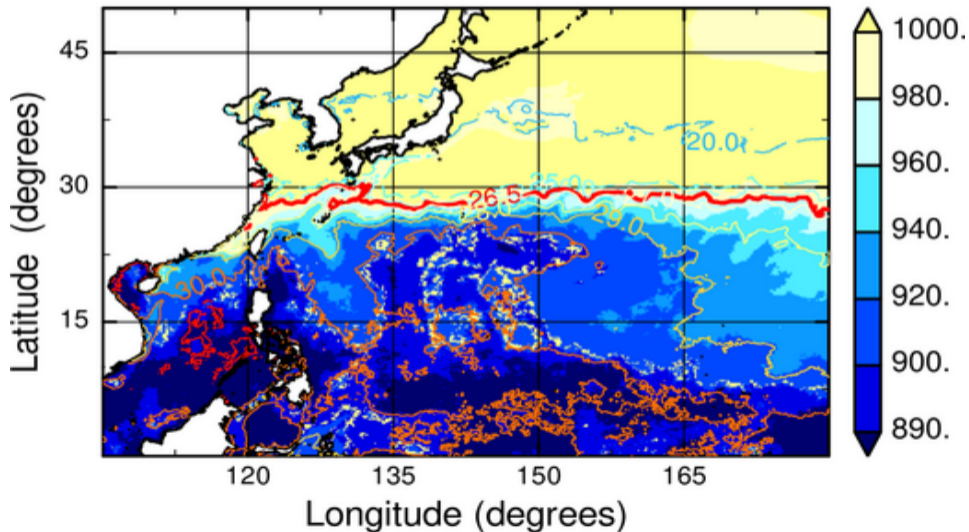
SATCON Vmax for MEKKHALA(07W) 2026



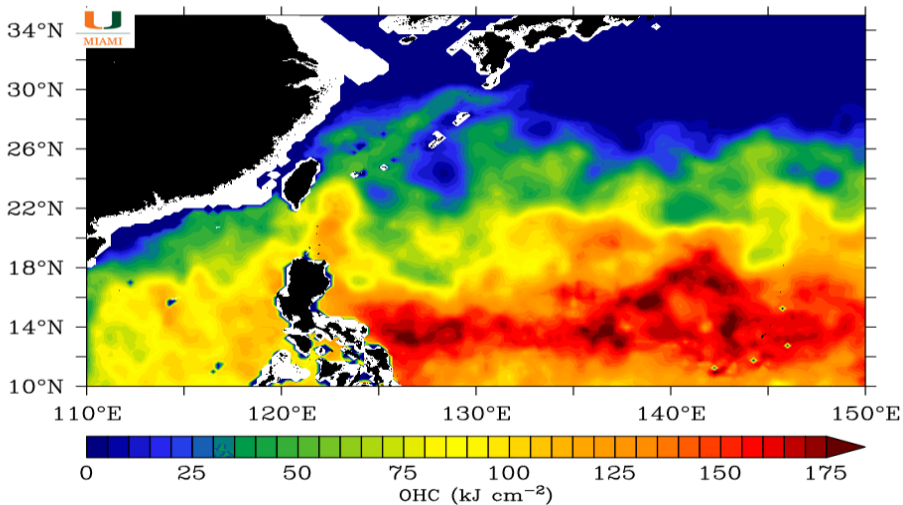
JMA 海面水温解析



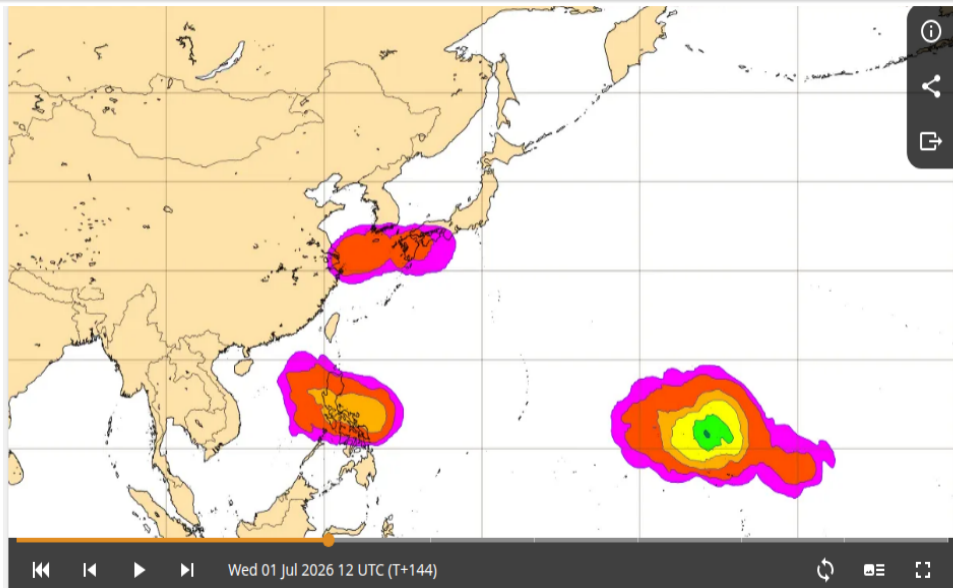
MPI_{BE}, JMAGSM+HIMSST (mb) (00:00:00Z24Jun2026)



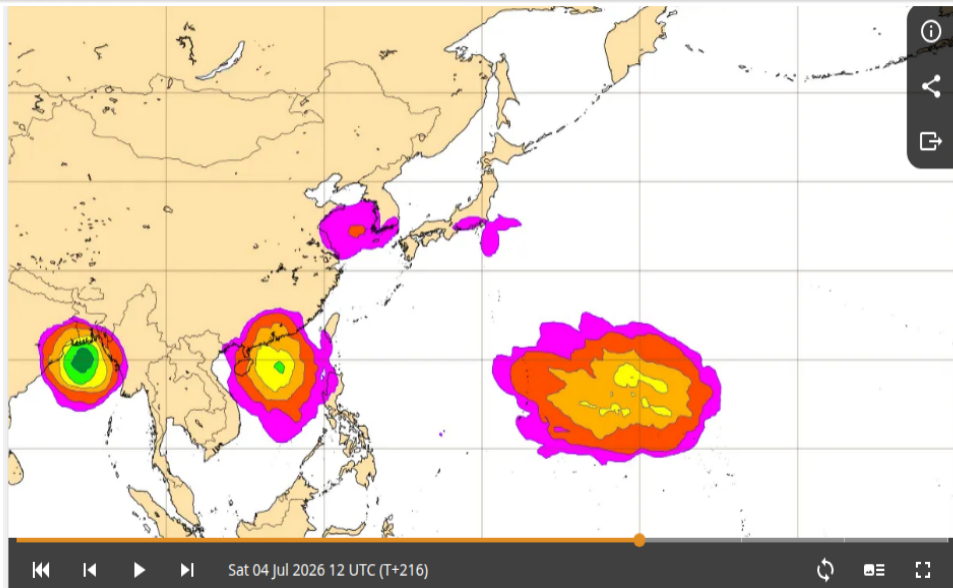
Ocean Heat Content: 06/25/2026



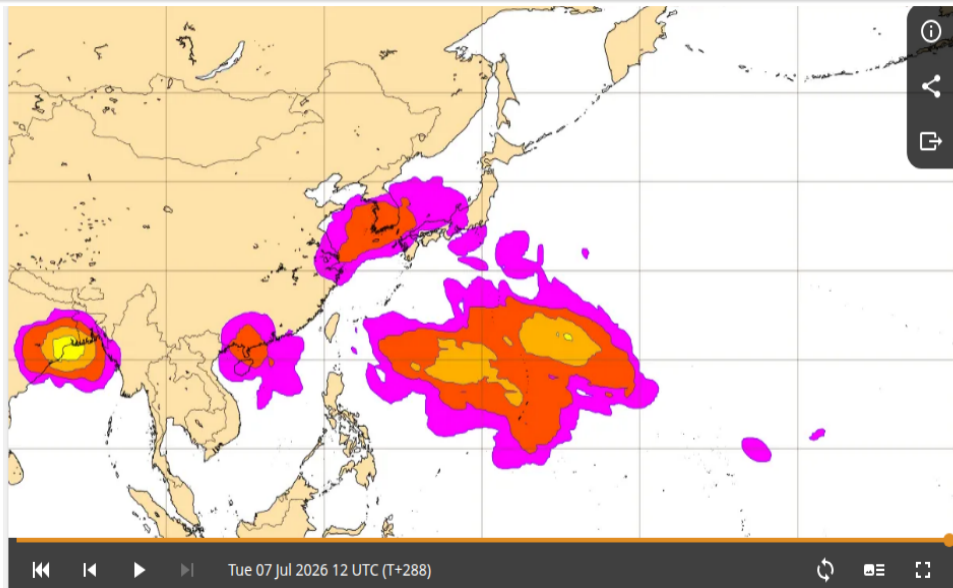
ECMWF TC genesis 07/01 12Z (6 日先) 予報



ECMWF TC genesis 07/04 12Z (9 日先) 予報



ECMWF TC genesis 07/07 12Z (12 日先) 予報

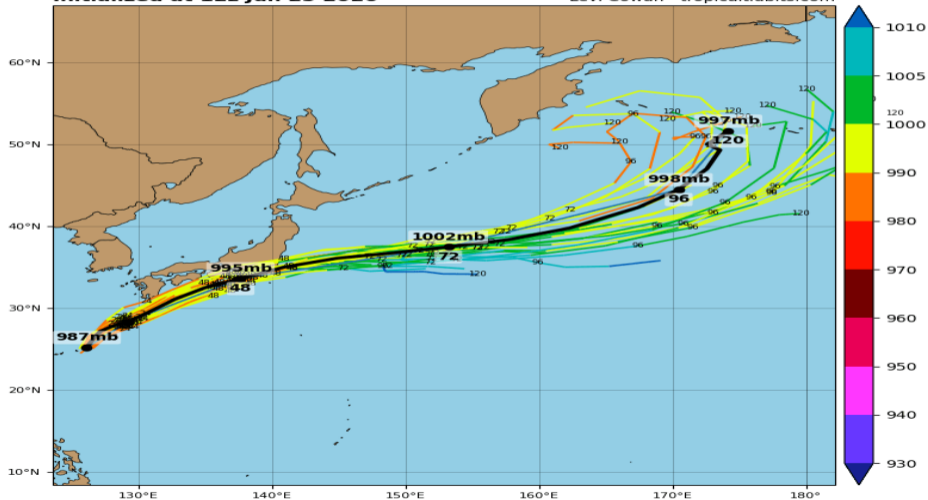


07W GEFS (06/25 12Z 初期値)

07W MEKKHALA - GEFS Tracks and Min. MSLP (hPa)

Initialized at 12z Jun 25 2026

Levi Cowan - tropicaltidbits.com

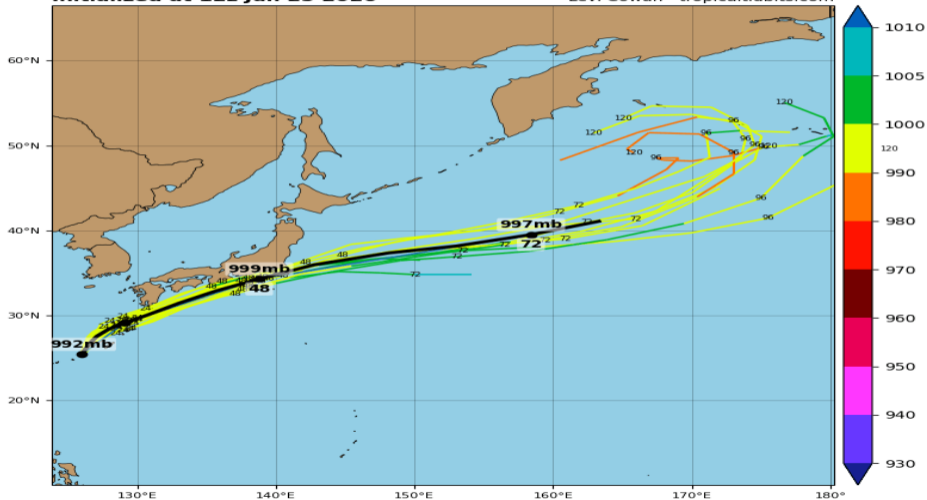


07W GEPS (06/25 12Z 初期値)

07W MEKKHALA - GEPS Tracks and Min. MSLP (hPa)

Initialized at 12z Jun 25 2026

Levi Cowan - tropicaltidbits.com

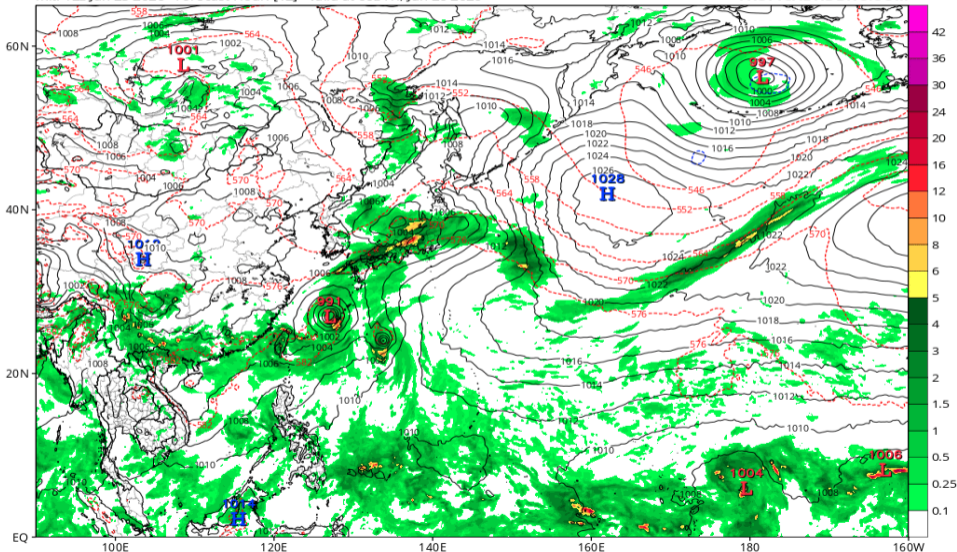


地上気圧配置 (GFS 06/26 00Z 予報)

GFS 6-hour Averaged Precip Rate (mm/hr), MSLP (hPa) & 1000-500mb Thickness (dam)

Init: 12z Jun 25 2026 Forecast Hour: [12] valid at 00z Fri, Jun 26 2026

TROPICALTIDBITS.COM

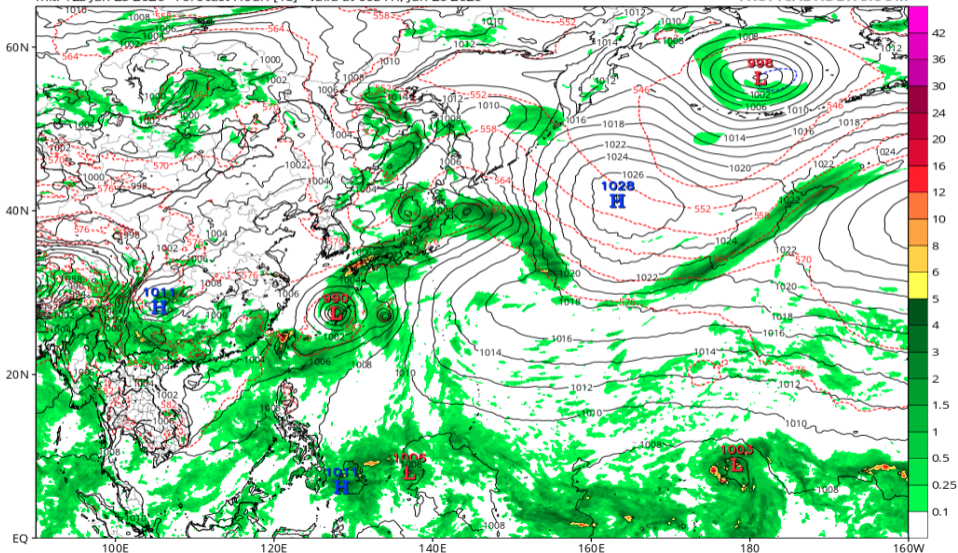


地上気圧配置 (GFS 06/26 06Z 予報)

GFS 6-hour Averaged Precip Rate (mm/hr), MSLP (hPa) & 1000-500mb Thickness (dam)

Init: 12z Jun 25 2026 Forecast Hour: [18] valid at 06z Fri, Jun 26 2026

TROPICALTIDBITS.COM

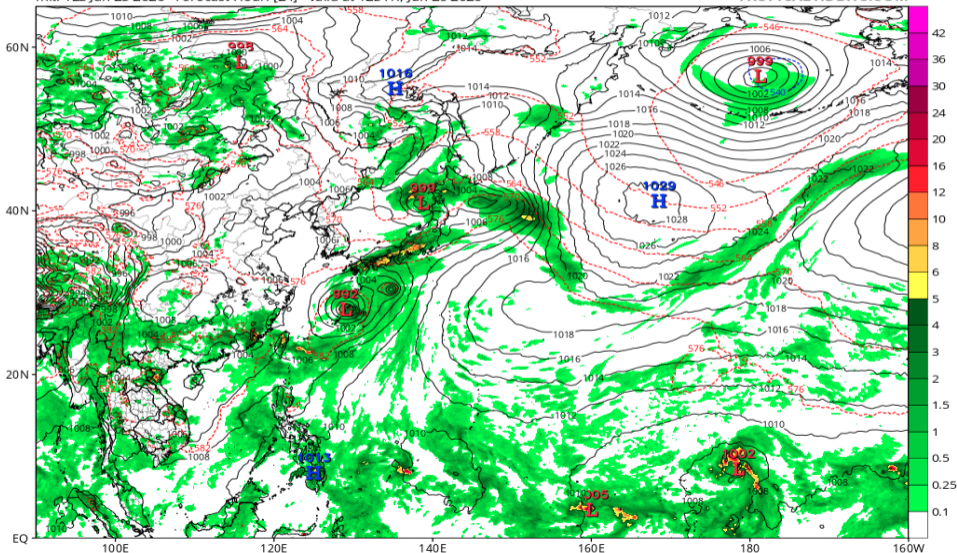


地上気圧配置 (GFS 06/26 12Z 予報)

GFS 6-hour Averaged Precip Rate (mm/hr), MSLP (hPa) & 1000-500mb Thickness (dam)

Init: 12z Jun 25 2026 Forecast Hour: [24] valid at 12z Fri, Jun 26 2026

TROPICALTIDBITS.COM

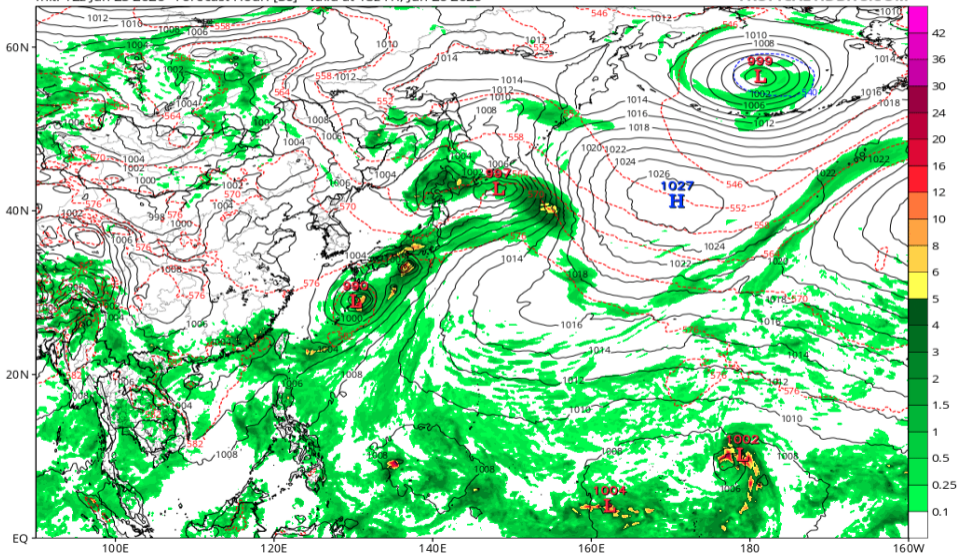


地上気圧配置 (GFS 06/26 18Z 予報)

GFS 6-hour Averaged Precip Rate (mm/hr), MSLP (hPa) & 1000-500mb Thickness (dam)

Init: 12z Jun 25 2026 Forecast Hour: [30] valid at 18z Fri, Jun 26 2026

TROPICALTIDBITS.COM

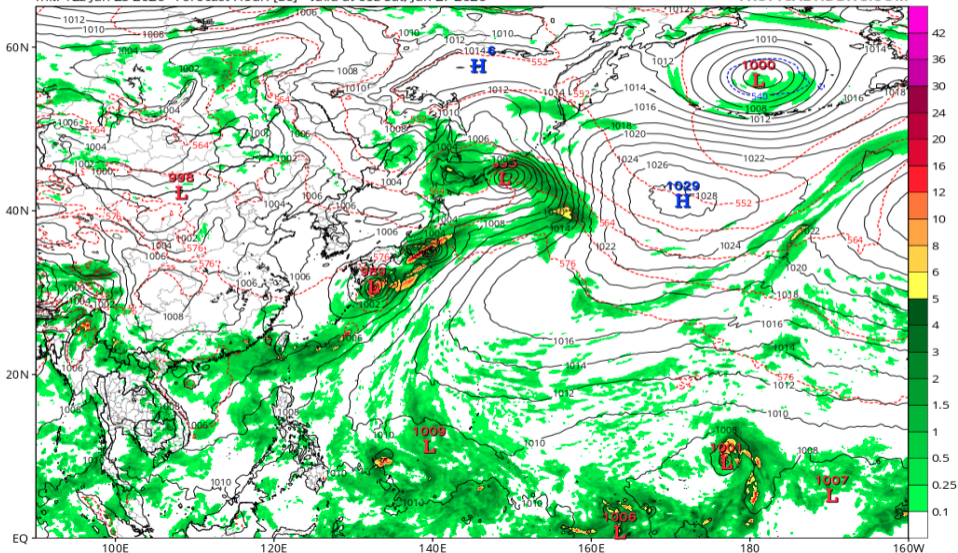


地上気圧配置 (GFS 06/27 00Z 予報)

GFS 6-hour Averaged Precip Rate (mm/hr), MSLP (hPa) & 1000-500mb Thickness (dam)

Init: 12z Jun 25 2026 Forecast Hour: [36] valid at 00z Sat, Jun 27 2026

TROPICALTIDBITS.COM

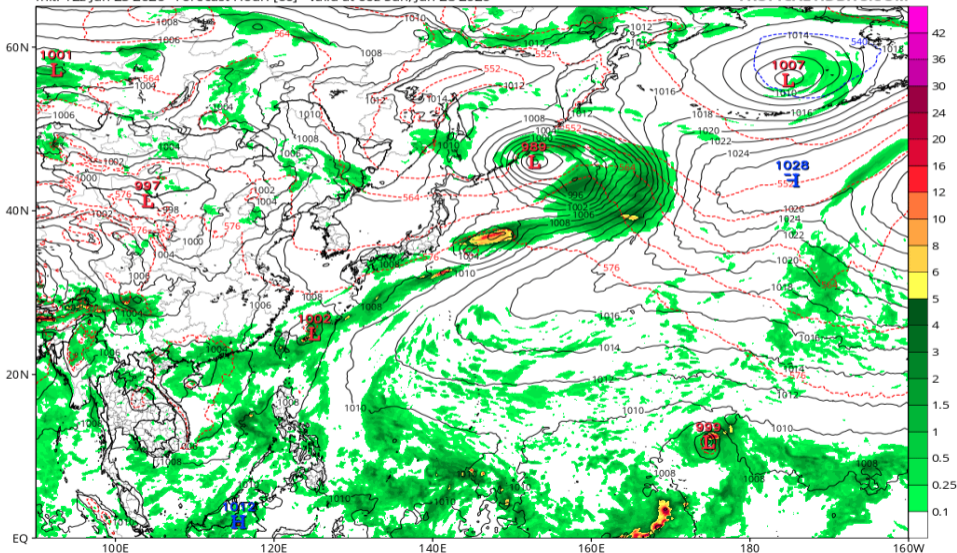


地上気圧配置 (GFS 06/28 00Z 予報)

GFS 6-hour Averaged Precip Rate (mm/hr), MSLP (hPa) & 1000-500mb Thickness (dam)

Init: 12z Jun 25 2026 Forecast Hour: [60] valid at 00z Sun, Jun 28 2026

TROPICALTIDBITS.COM

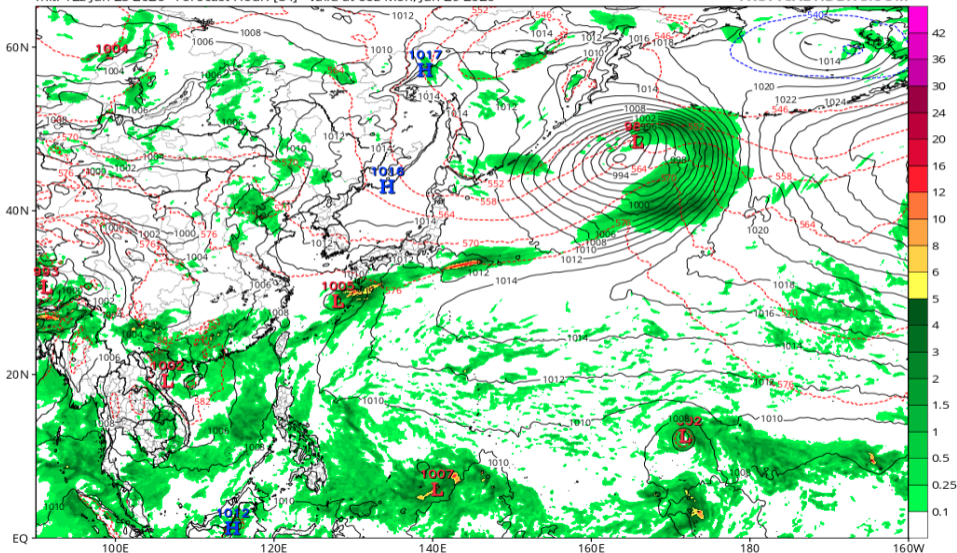


地上気圧配置 (GFS 06/29 00Z 予報)

GFS 6-hour Averaged Precip Rate (mm/hr), MSLP (hPa) & 1000-500mb Thickness (dam)

Init: 12z Jun 25 2026 Forecast Hour: [84] valid at 00z Mon, Jun 29 2026

TROPICALTIDBITS.COM

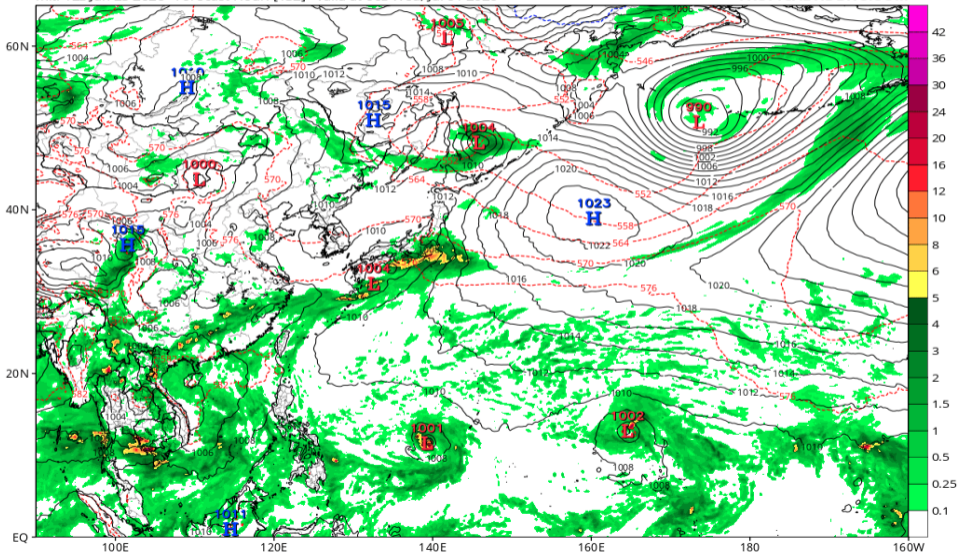


地上気圧配置 (GFS 07/01 00Z 予報)

GFS 6-hour Averaged Precip Rate (mm/hr), MSLP (hPa) & 1000-500mb Thickness (dam)

Init: 12z Jun 25 2026 Forecast Hour: [132] valid at 00z Wed, Jul 01 2026

TROPICALTIDBITS.COM

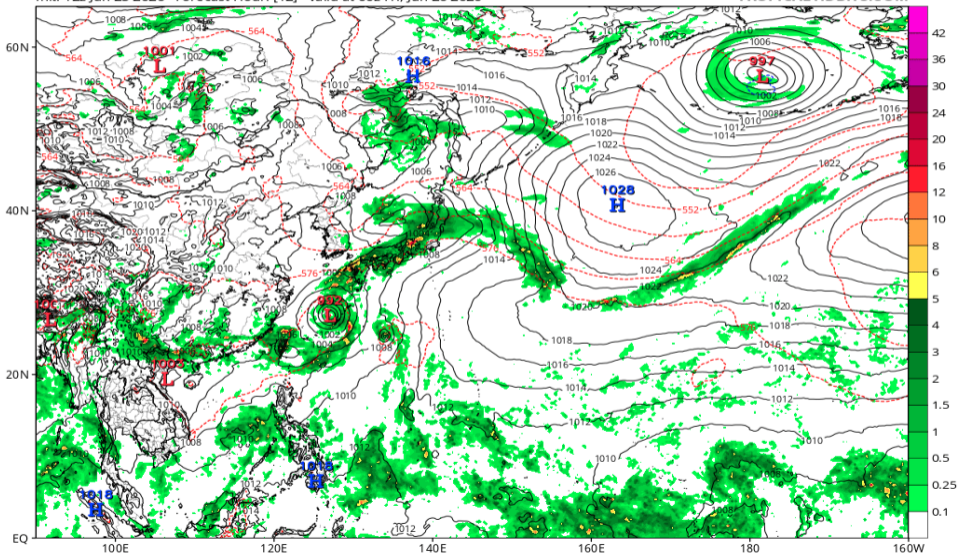


地上気圧配置 (ECMWF 06/26 00Z 予報)

ECMWF Instantaneous Precip Rate (mm/hr), MSLP (hPa) & 1000-500mb Thickness (dam)

Init: 12z Jun 25 2026 Forecast Hour: [12] valid at 00z Fri, Jun 26 2026

TROPICALTIDBITS.COM

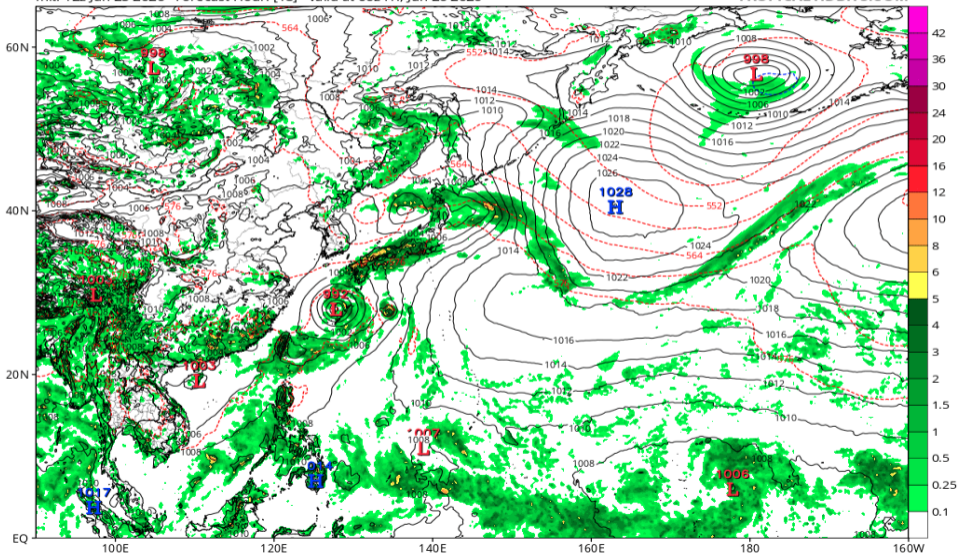


地上気圧配置 (ECMWF 06/26 06Z 予報)

ECMWF Instantaneous Precip Rate (mm/hr), MSLP (hPa) & 1000-500mb Thickness (dam)

Init: 12z Jun 25 2026 Forecast Hour: [18] valid at 06z Fri, Jun 26 2026

TROPICALTIDBITS.COM

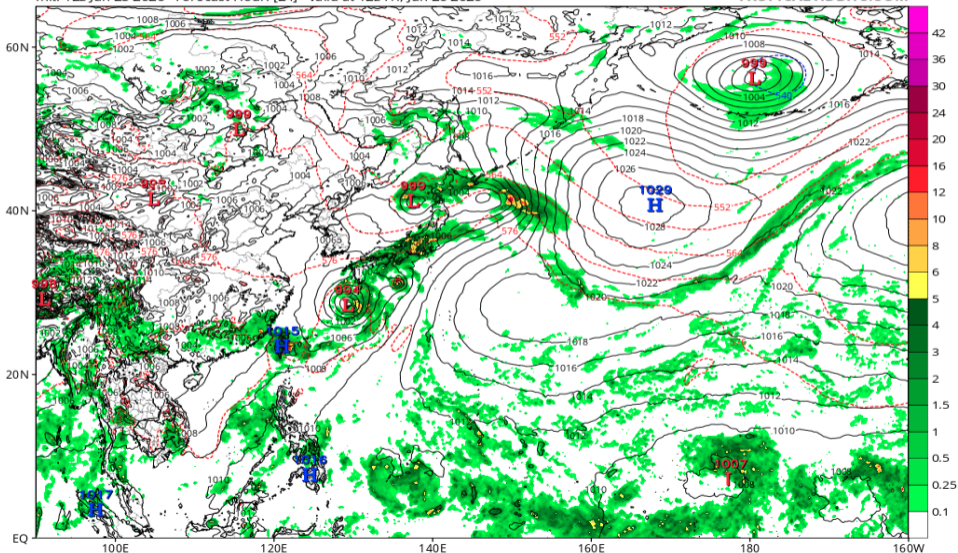


地上気圧配置 (ECMWF 06/26 12Z 予報)

ECMWF Instantaneous Precip Rate (mm/hr), MSLP (hPa) & 1000-500mb Thickness (dam)

Init: 12z Jun 25 2026 Forecast Hour: [24] valid at 12z Fri, Jun 26 2026

TROPICALTIDBITS.COM

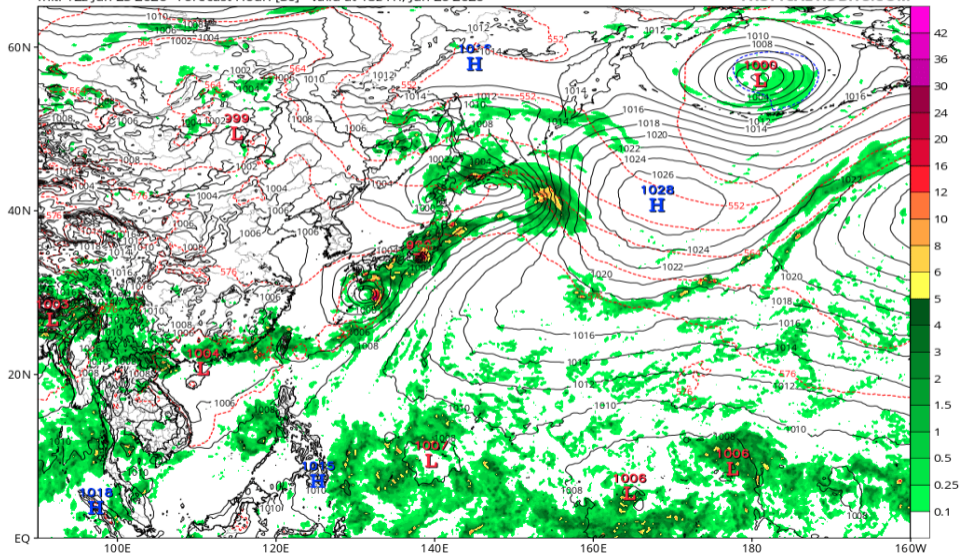


地上気圧配置 (ECMWF 06/26 18Z 予報)

ECMWF Instantaneous Precip Rate (mm/hr), MSLP (hPa) & 1000-500mb Thickness (dam)

Init: 12z Jun 25 2026 Forecast Hour: [30] valid at 18z Fri, Jun 26 2026

TROPICALTIDBITS.COM

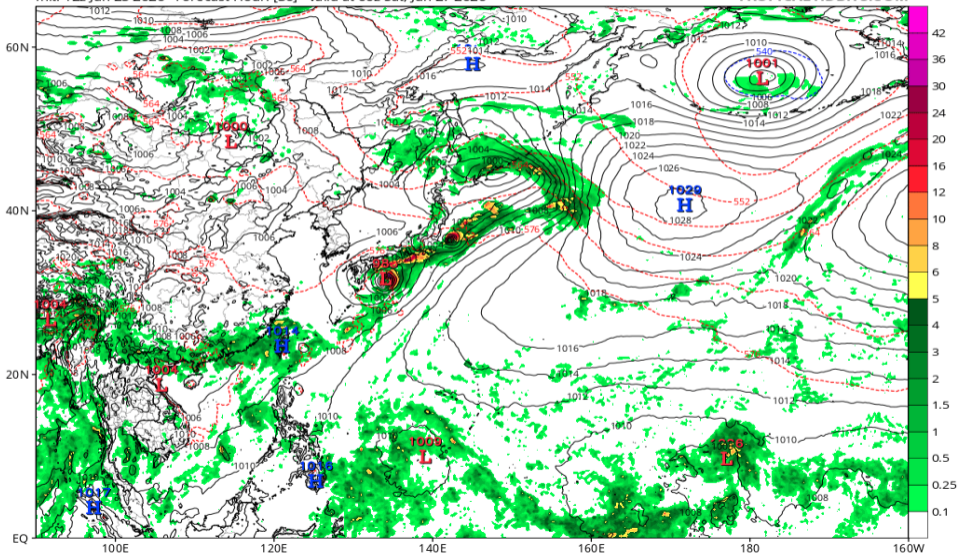


地上気圧配置 (ECMWF 06/27 00Z 予報)

ECMWF Instantaneous Precip Rate (mm/hr), MSLP (hPa) & 1000-500mb Thickness (dam)

Init: 12z Jun 25 2026 Forecast Hour: [36] valid at 00z Sat, Jun 27 2026

TROPICALTIDBITS.COM

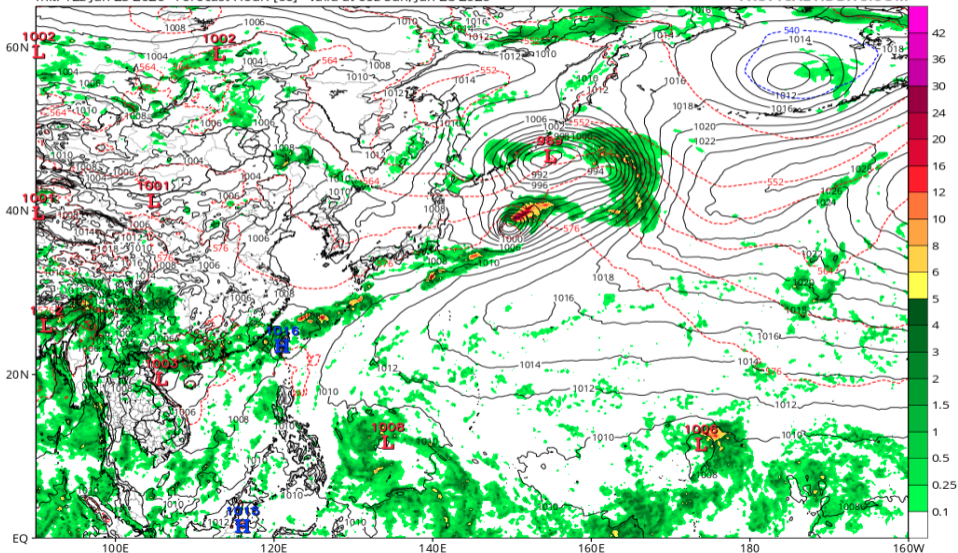


地上気圧配置 (ECMWF 06/28 00Z 予報)

ECMWF Instantaneous Precip Rate (mm/hr), MSLP (hPa) & 1000-500mb Thickness (dam)

Init: 12z Jun 25 2026 Forecast Hour: [60] valid at 00z Sun, Jun 28 2026

TROPICALTIDBITS.COM

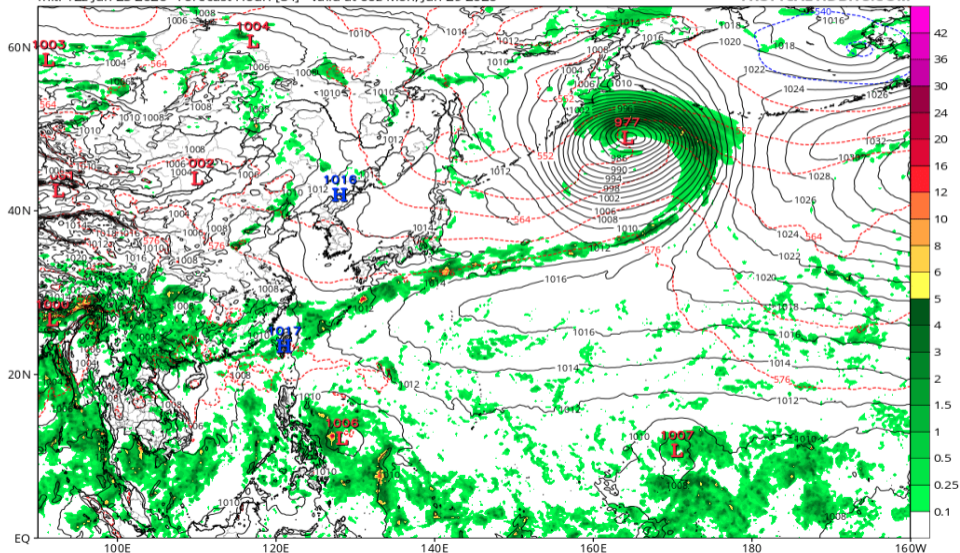


地上気圧配置 (ECMWF 06/29 00Z 予報)

ECMWF Instantaneous Precip Rate (mm/hr), MSLP (hPa) & 1000-500mb Thickness (dam)

Init: 12z Jun 25 2026 Forecast Hour: [84] valid at 00z Mon, Jun 29 2026

TROPICALTIDBITS.COM

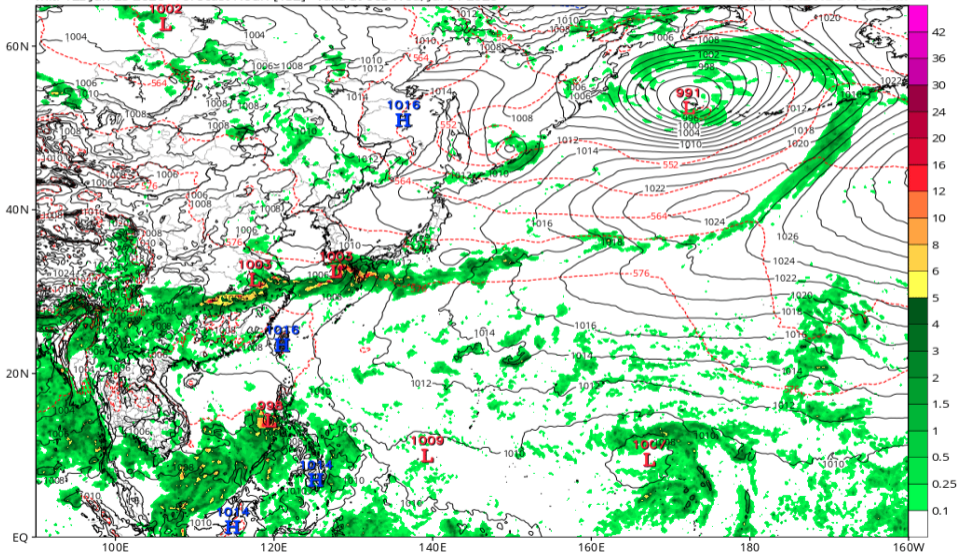


地上気圧配置 (ECMWF 07/01 00Z 予報)

ECMWF Instantaneous Precip Rate (mm/hr), MSLP (hPa) & 1000-500mb Thickness (dam)

Init: 12z Jun 25 2026 Forecast Hour: [132] valid at 00z Wed, Jul 01 2026

TROPICALTIDBITS.COM

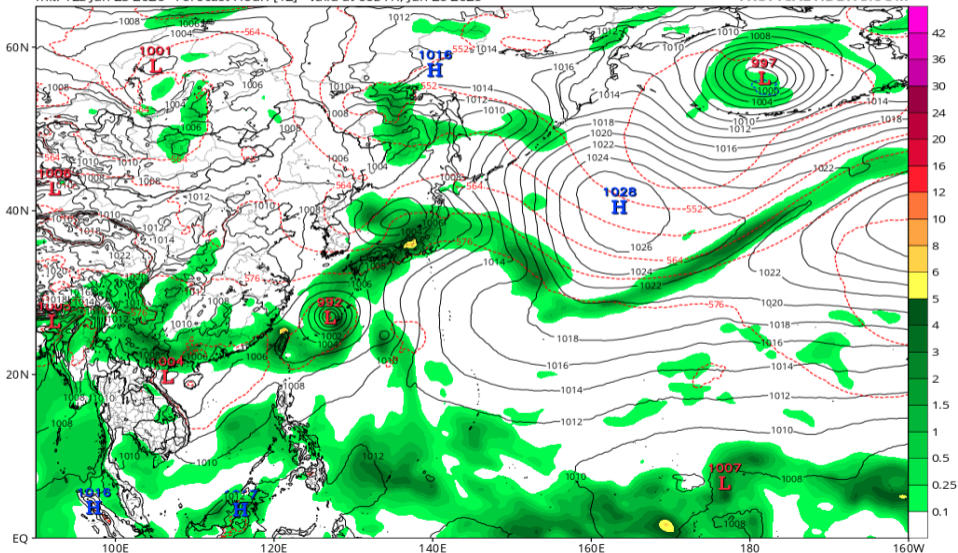


地上気圧配置 (AIFS 06/26 00Z 予報)

EC-AIFS 6-hour Averaged Precip Rate (mm/hr), MSLP (hPa) & 1000-500mb Thickness (dam)

Init: 12z Jun 25 2026 Forecast Hour: [12] valid at 00z Fri, Jun 26 2026

TROPICALTIDBITS.COM

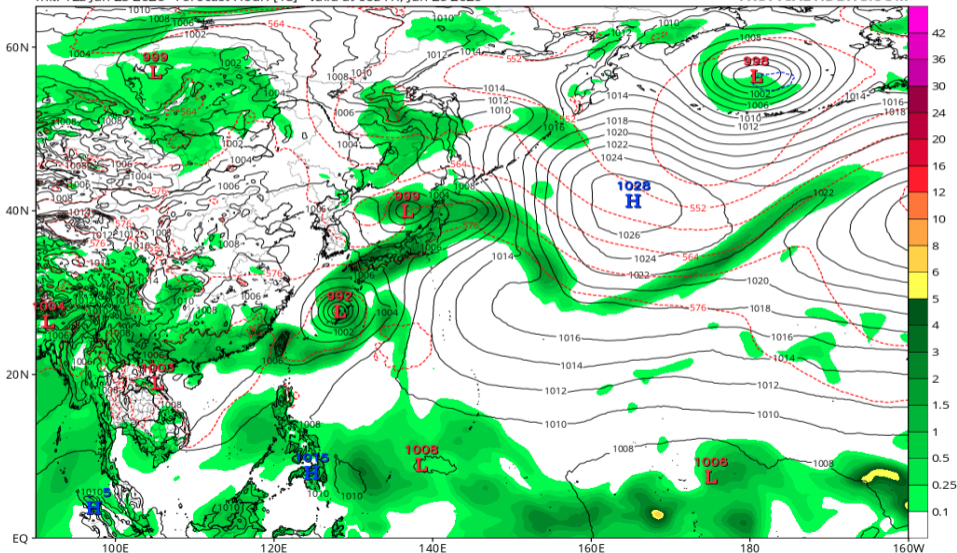


地上気圧配置 (AIFS 06/26 06Z 予報)

EC-AIFS 6-hour Averaged Precip Rate (mm/hr), MSLP (hPa) & 1000-500mb Thickness (dam)

Init: 12z Jun 25 2026 Forecast Hour: [18] valid at 06z Fri, Jun 26 2026

TROPICALTIDBITS.COM

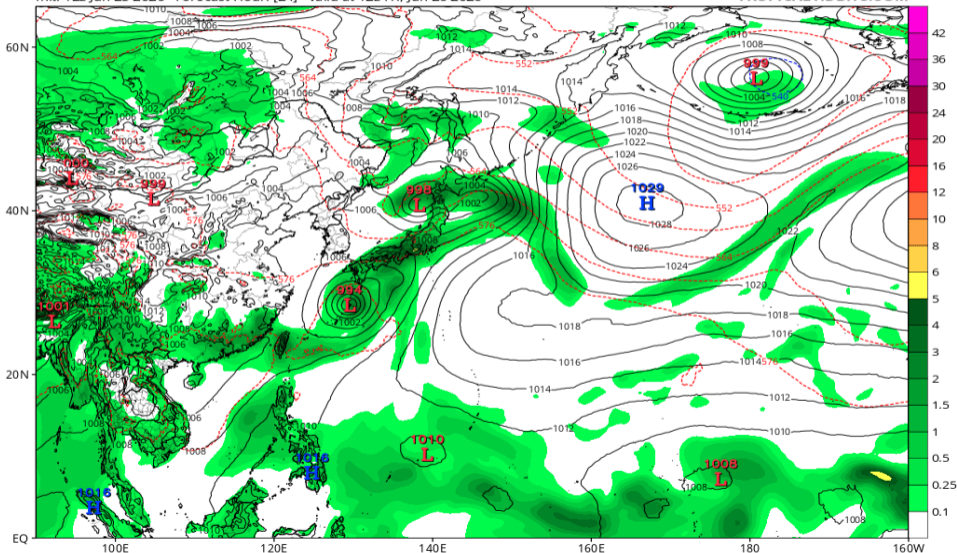


地上気圧配置 (AIFS 06/26 12Z 予報)

EC-AIFS 6-hour Averaged Precip Rate (mm/hr), MSLP (hPa) & 1000-500mb Thickness (dam)

Init: 12z Jun 25 2026 Forecast Hour: [24] valid at 12z Fri, Jun 26 2026

TROPICALTIDBITS.COM

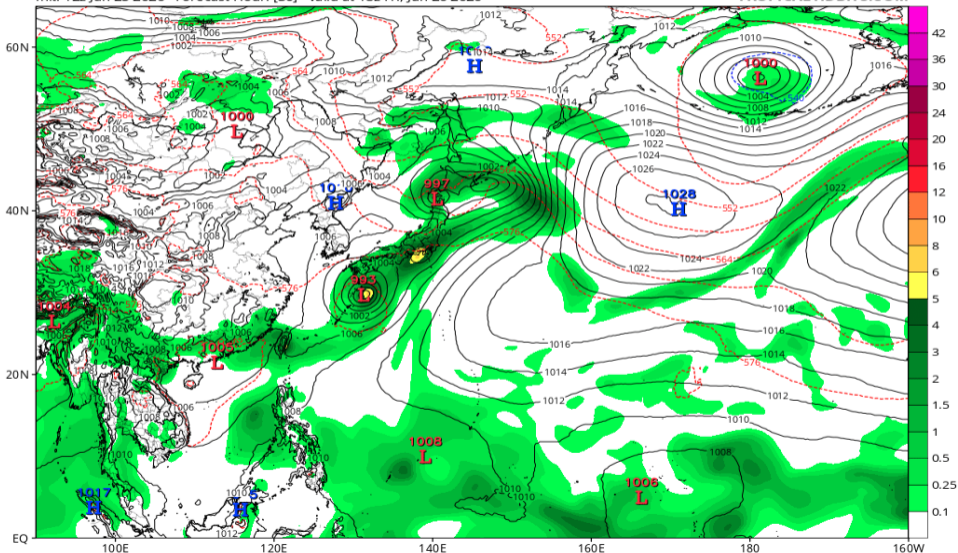


地上気圧配置 (AIFS 06/26 18Z 予報)

EC-AIFS 6-hour Averaged Precip Rate (mm/hr), MSLP (hPa) & 1000-500mb Thickness (dam)

Init: 12z Jun 25 2026 Forecast Hour: [30] valid at 18z Fri, Jun 26 2026

TROPICALTIDBITS.COM

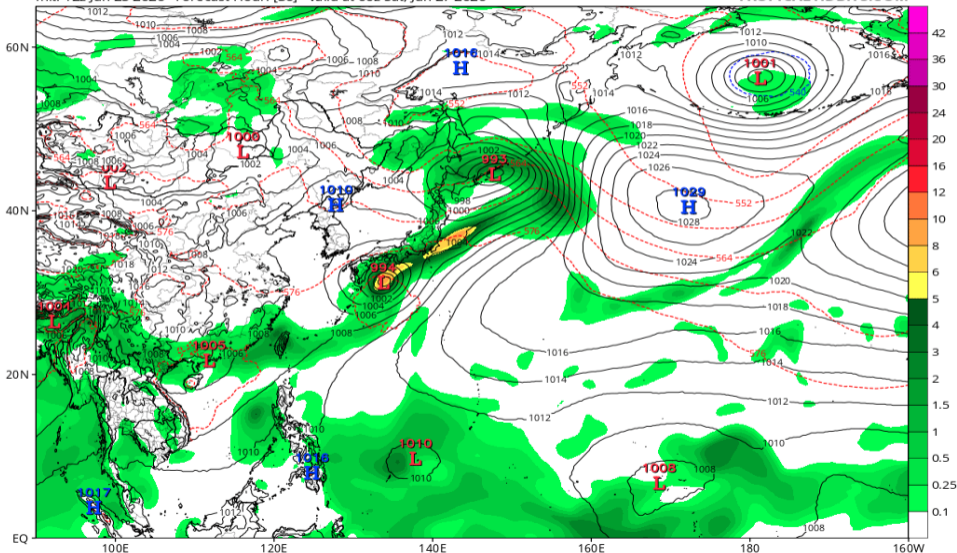


地上気圧配置 (AIFS 06/27 00Z 予報)

EC-AIFS 6-hour Averaged Precip Rate (mm/hr), MSLP (hPa) & 1000-500mb Thickness (dam)

Init: 12z Jun 25 2026 Forecast Hour: [36] valid at 00z Sat, Jun 27 2026

TROPICALTIDBITS.COM

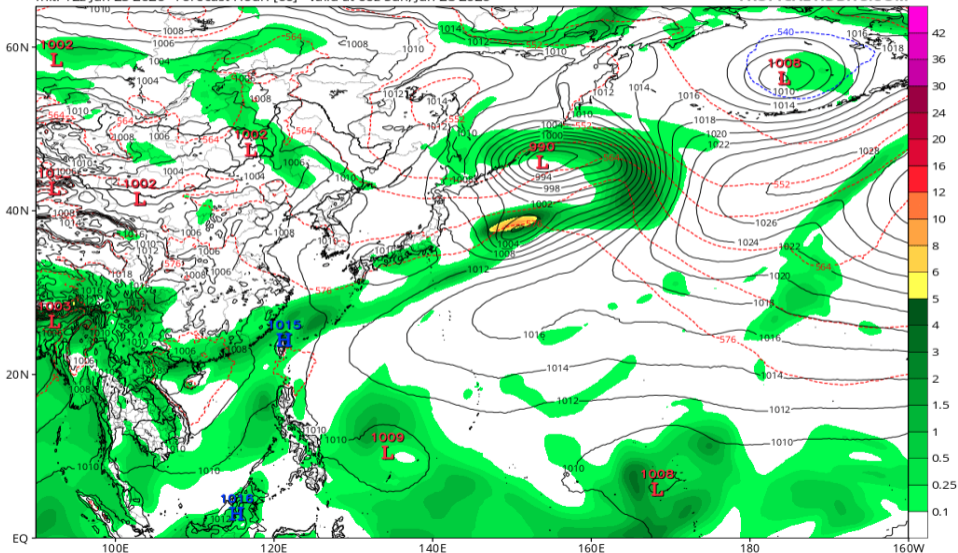


地上気圧配置 (AIFS 06/28 00Z 予報)

EC-AIFS 6-hour Averaged Precip Rate (mm/hr), MSLP (hPa) & 1000-500mb Thickness (dam)

Init: 12z Jun 25 2026 Forecast Hour: [60] valid at 00z Sun, Jun 28 2026

TROPICALTIDBITS.COM

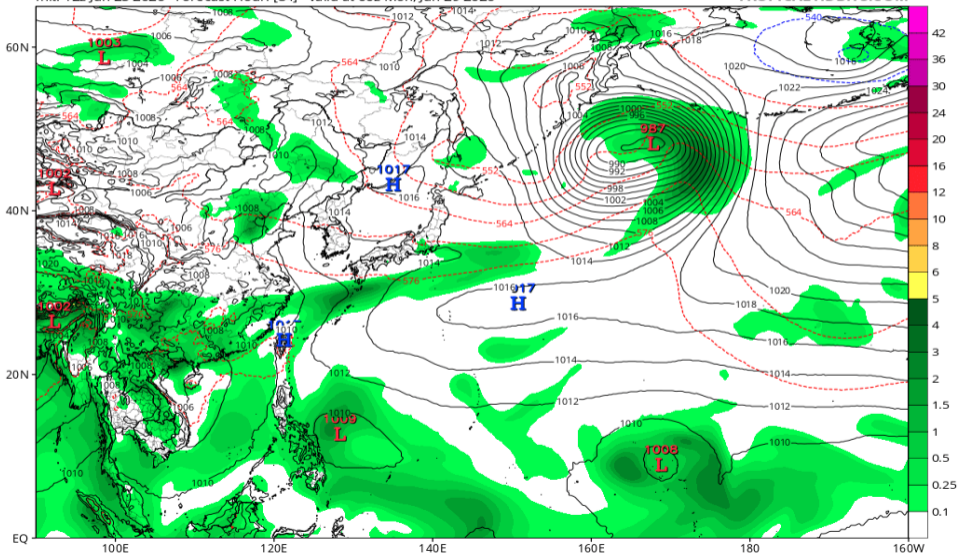


地上気圧配置 (AIFS 06/29 00Z 予報)

EC-AIFS 6-hour Averaged Precip Rate (mm/hr), MSLP (hPa) & 1000-500mb Thickness (dam)

Init: 12z Jun 25 2026 Forecast Hour: [84] valid at 00z Mon, Jun 29 2026

TROPICALTIDBITS.COM

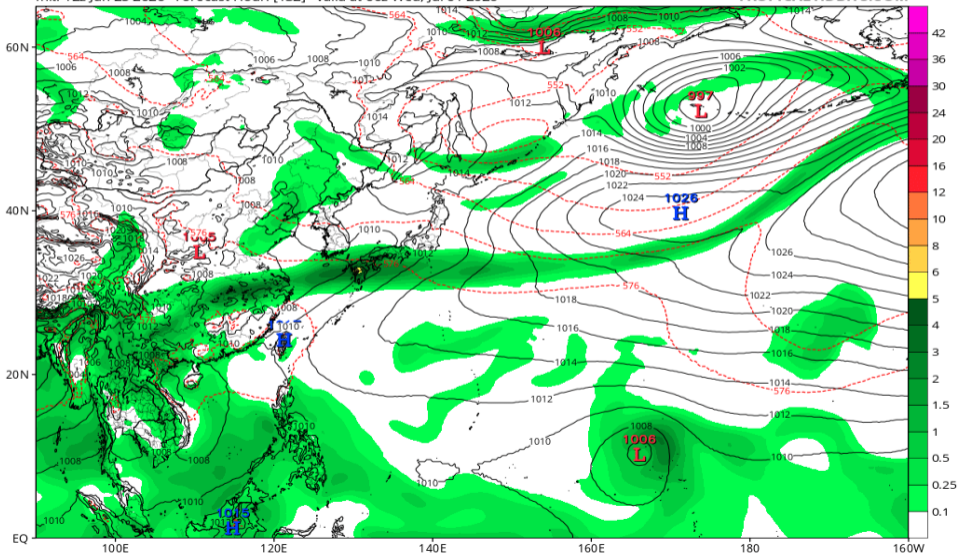


地上気圧配置 (AIFS 07/01 00Z 予報)

EC-AIFS 6-hour Averaged Precip Rate (mm/hr), MSLP (hPa) & 1000-500mb Thickness (dam)

Init: 12z Jun 25 2026 Forecast Hour: [132] valid at 00z Wed, Jul 01 2026

TROPICALTIDBITS.COM

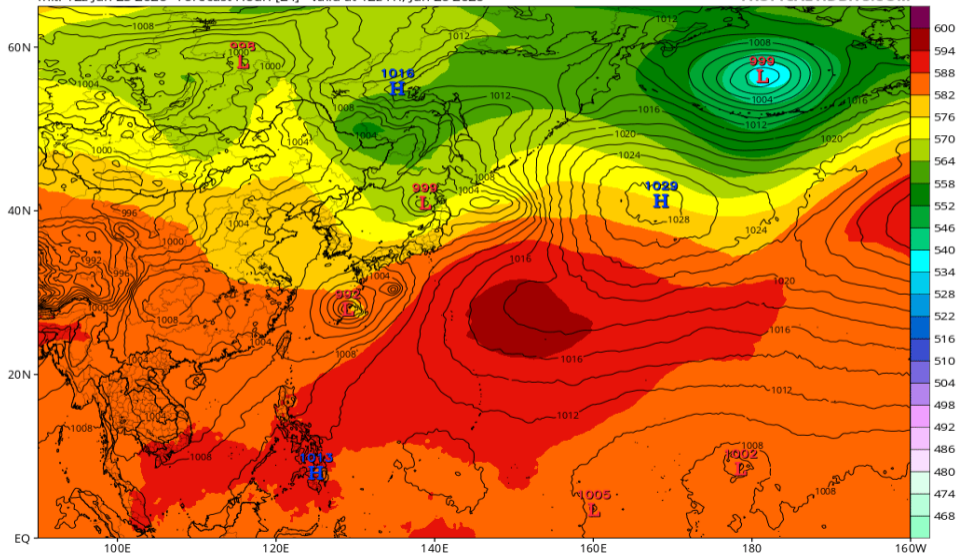


Z500/地上気圧配置 (GFS 06/26 12Z 予報)

GFS 500mb Geopotential Height (dam) & MSLP (mb)

Init: 12z Jun 25 2026 Forecast Hour: [24] valid at 12z Fri, Jun 26 2026

TROPICALTIDBITS.COM

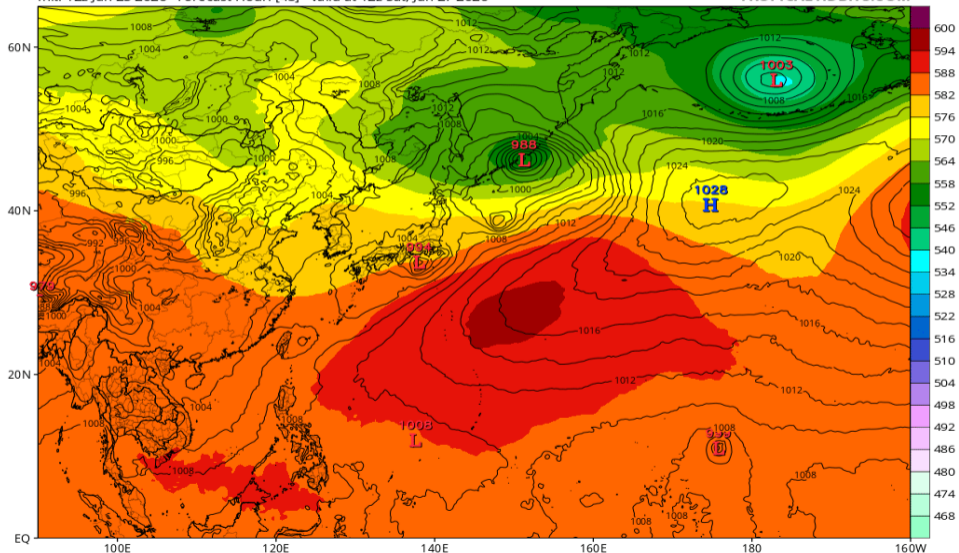


Z500/地上気圧配置 (GFS 06/27 12Z 予報)

GFS 500mb Geopotential Height (dam) & MSLP (mb)

Init: 12z Jun 25 2026 Forecast Hour: [48] valid at 12z Sat, Jun 27 2026

TROPICALTIDBITS.COM

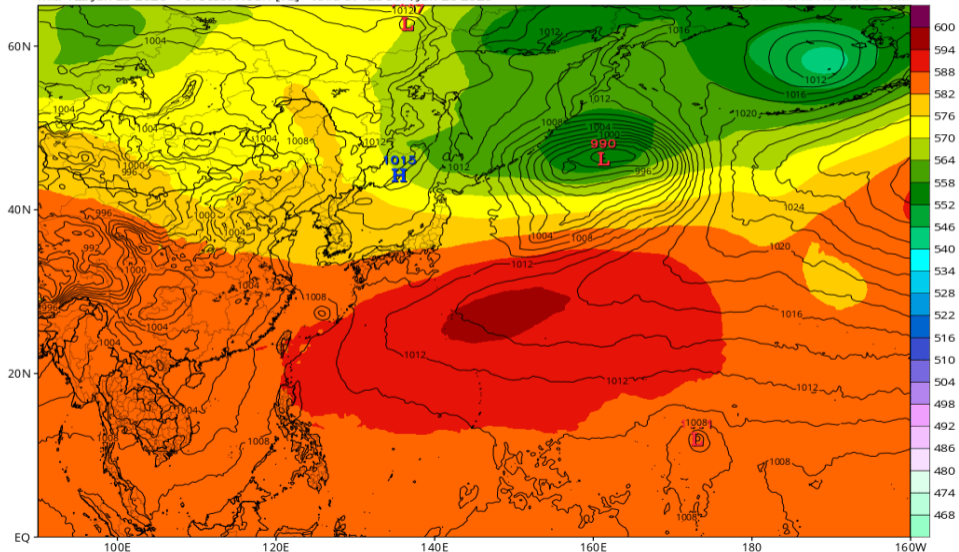


Z500/地上気圧配置 (GFS 06/28 12Z 予報)

GFS 500mb Geopotential Height (dam) & MSLP (mb)

Init: 12z Jun 25 2026 Forecast Hour: [72] valid at 12z Sun, Jun 28 2026

TROPICALTIDBITS.COM

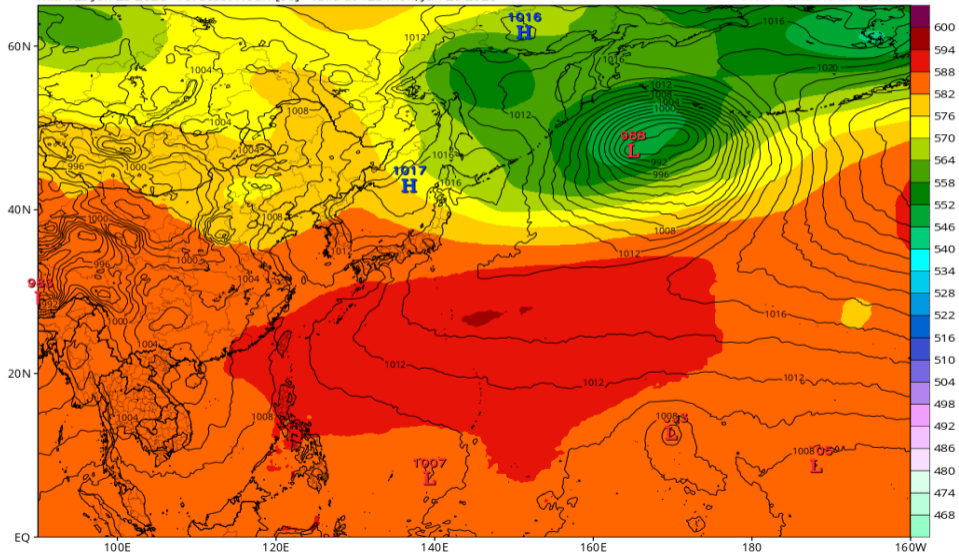


Z500/地上気圧配置 (GFS 06/29 12Z 予報)

GFS 500mb Geopotential Height (dam) & MSLP (mb)

Init: 12z Jun 25 2026 Forecast Hour: [96] valid at 12z Mon, Jun 29 2026

TROPICALTIDBITS.COM

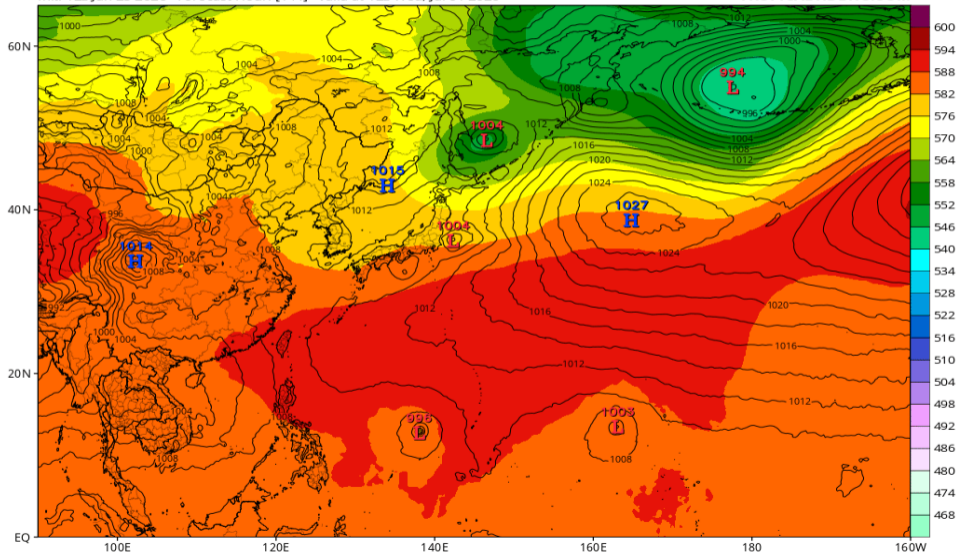


Z500/地上気圧配置 (GFS 07/01 12Z 予報)

GFS 500mb Geopotential Height (dam) & MSLP (mb)

Init: 12z Jun 25 2026 Forecast Hour: [144] valid at 12z Wed, Jul 01 2026

TROPICALTIDBITS.COM

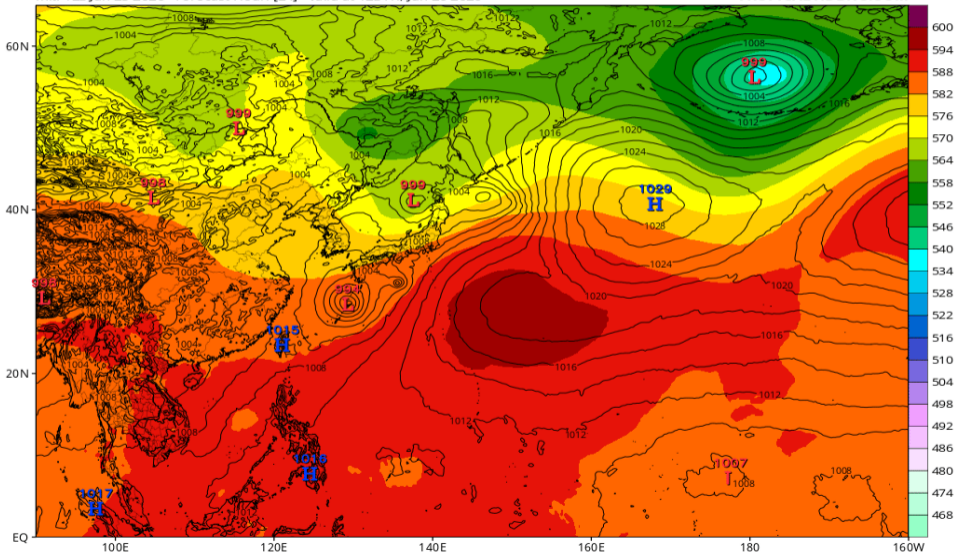


Z500/地上気圧配置 (ECMWF 06/26 12Z 予報)

ECMWF 500mb Geopotential Height (dam) & MSLP (mb)

Init: 12z Jun 25 2026 Forecast Hour: [24] valid at 12z Fri, Jun 26 2026

TROPICALTIDBITS.COM

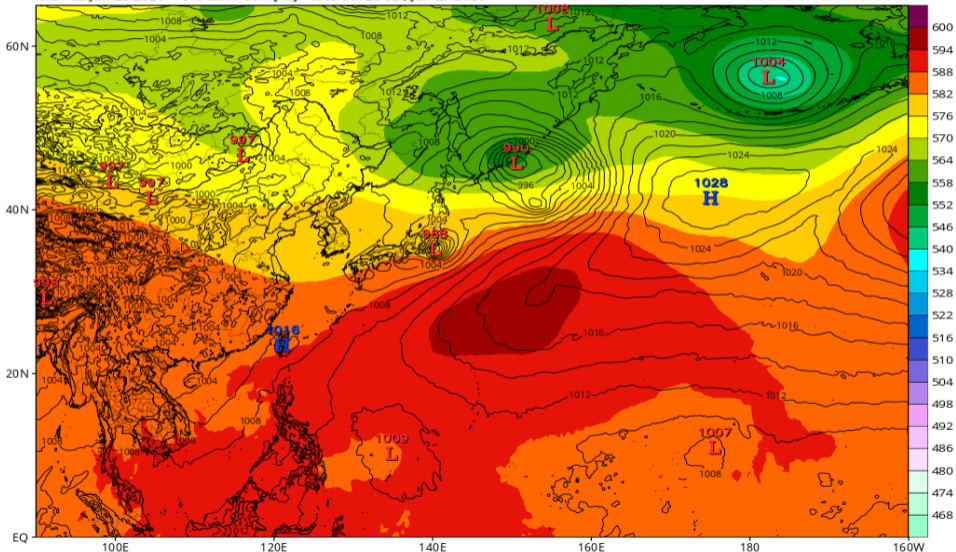


Z500/地上気圧配置 (ECMWF 06/27 12Z 予報)

ECMWF 500mb Geopotential Height (dam) & MSLP (mb)

Init: 12z Jun 25 2026 Forecast Hour: [48] valid at 12z Sat, Jun 27 2026

TROPICALTIDBITS.COM

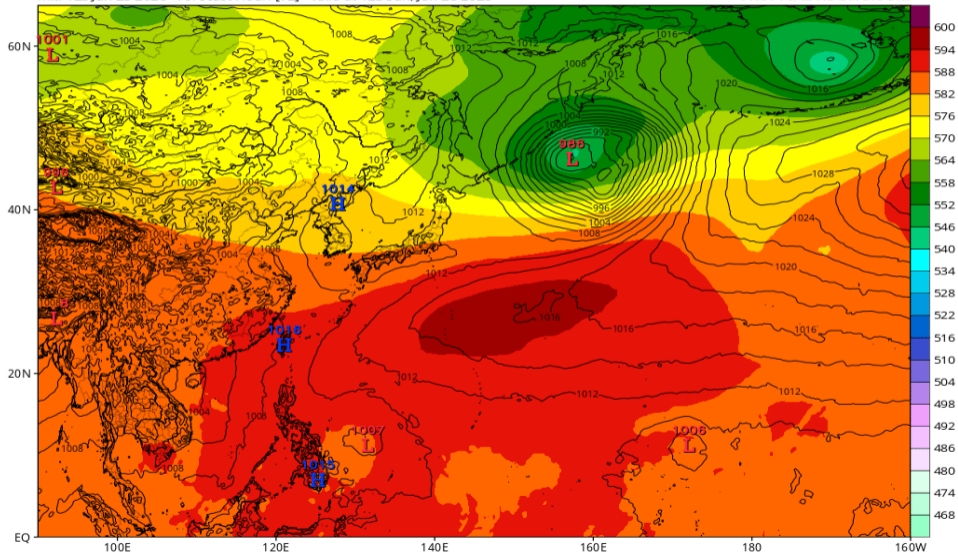


Z500/地上気圧配置 (ECMWF 06/28 12Z 予報)

ECMWF 500mb Geopotential Height (dam) & MSLP (mb)

Init: 12z Jun 25 2026 Forecast Hour: [72] valid at 12z Sun, Jun 28 2026

TROPICALTIDBITS.COM

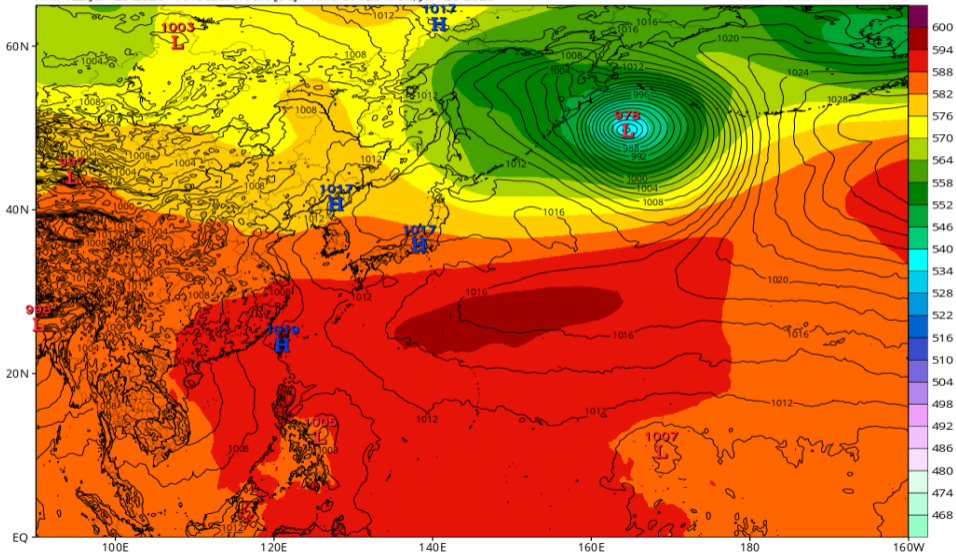


Z500/地上気圧配置 (ECMWF 06/29 12Z 予報)

ECMWF 500mb Geopotential Height (dam) & MSLP (mb)

Init: 12z Jun 25 2026 Forecast Hour: [96] valid at 12z Mon, Jun 29 2026

TROPICALTIDBITS.COM

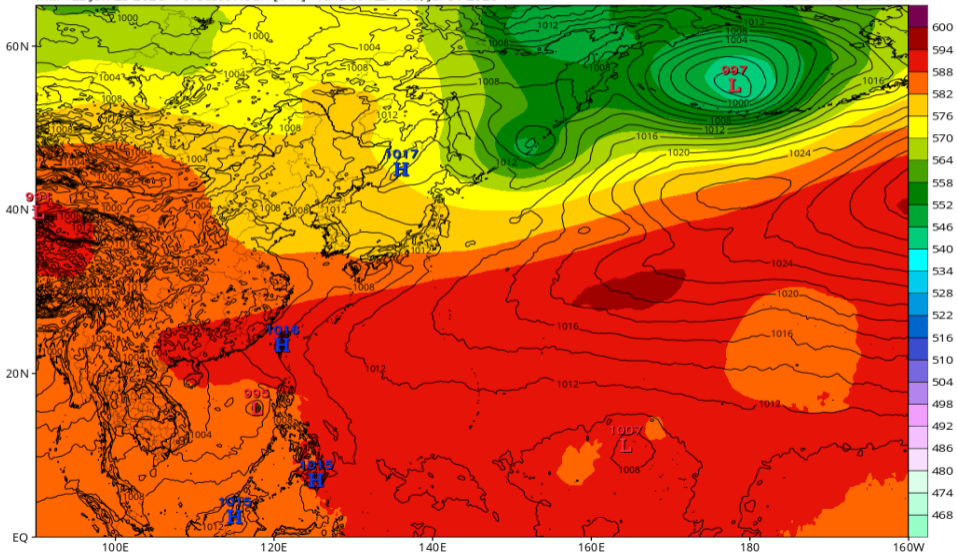


Z500/地上気圧配置 (ECMWF 07/01 12Z 予報)

ECMWF 500mb Geopotential Height (dam) & MSLP (mb)

Init: 12z Jun 25 2026 Forecast Hour: [144] valid at 12z Wed, Jul 01 2026

TROPICALTIDBITS.COM

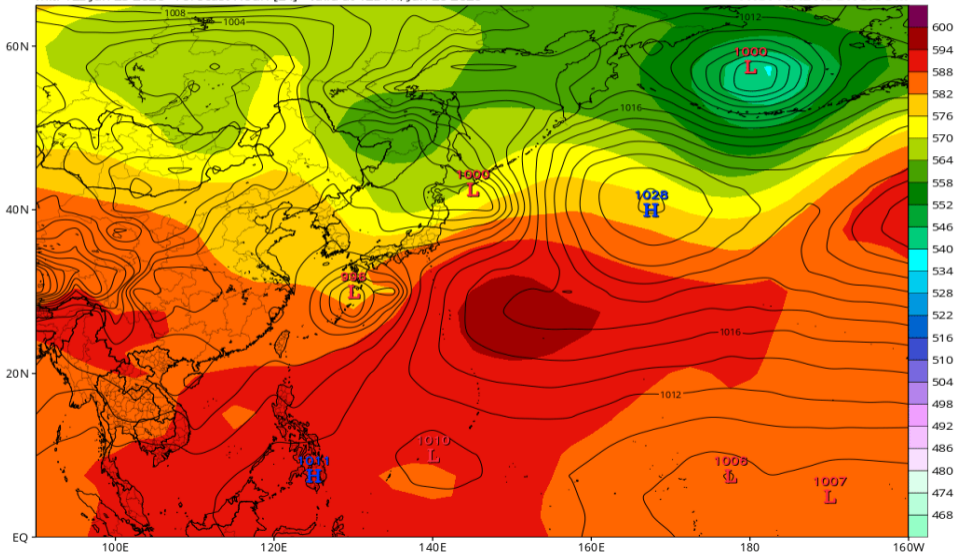


Z500/地上気圧配置 (JMA-GSM 06/26 12Z 予報)

JMA 500mb Geopotential Height (dam) & MSLP (mb)

Init: 12z Jun 25 2026 Forecast Hour: [24] valid at 12z Fri, Jun 26 2026

TROPICALTIDBITS.COM

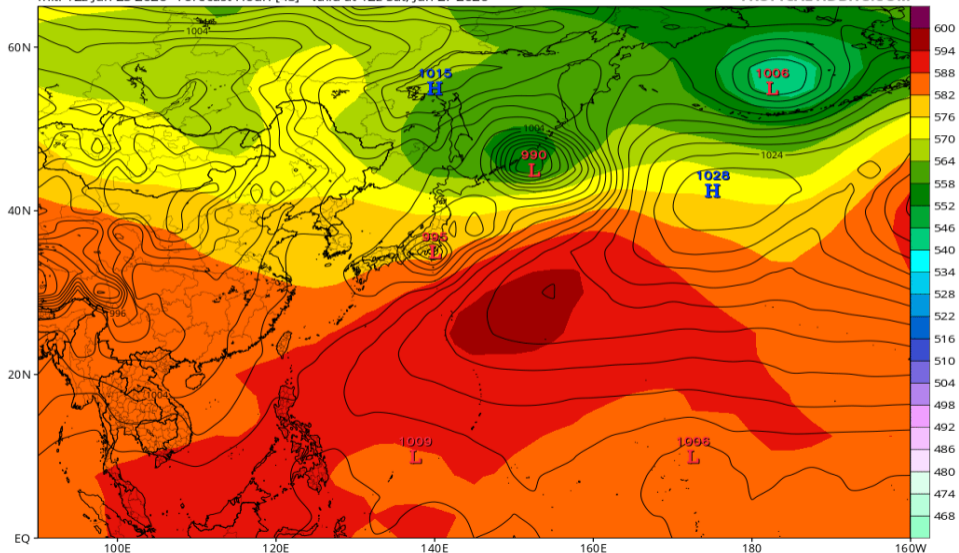


Z500/地上気圧配置 (JMA-GSM 06/27 12Z 予報)

JMA 500mb Geopotential Height (dam) & MSLP (mb)

Init: 12z Jun 25 2026 Forecast Hour: [48] valid at 12z Sat, Jun 27 2026

TROPICALTIDBITS.COM

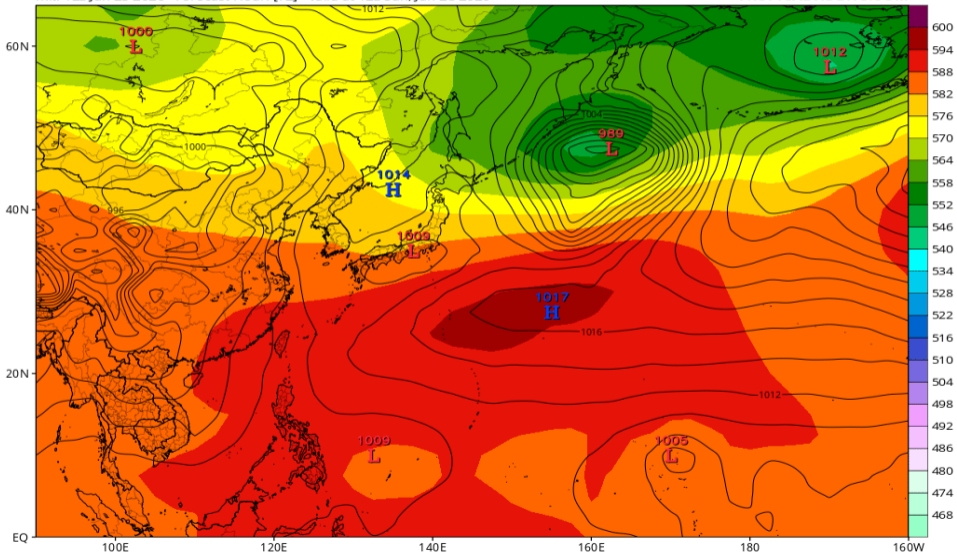


Z500/地上気圧配置 (JMA-GSM 06/28 12Z 予報)

JMA 500mb Geopotential Height (dam) & MSLP (mb)

Init: 12z Jun 25 2026 Forecast Hour: [72] valid at 12z Sun, Jun 28 2026

TROPICALTIDBITS.COM

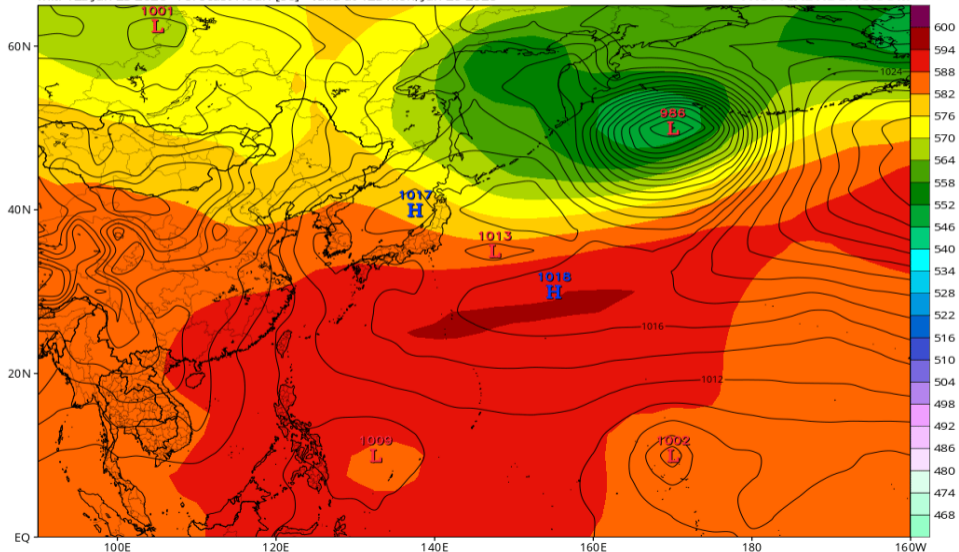


Z500/地上気圧配置 (JMA-GSM 06/29 12Z 予報)

JMA 500mb Geopotential Height (dam) & MSLP (mb)

Init: 12z Jun 25 2026 Forecast Hour: [96] valid at 12z Mon, Jun 29 2026

TROPICALTIDBITS.COM

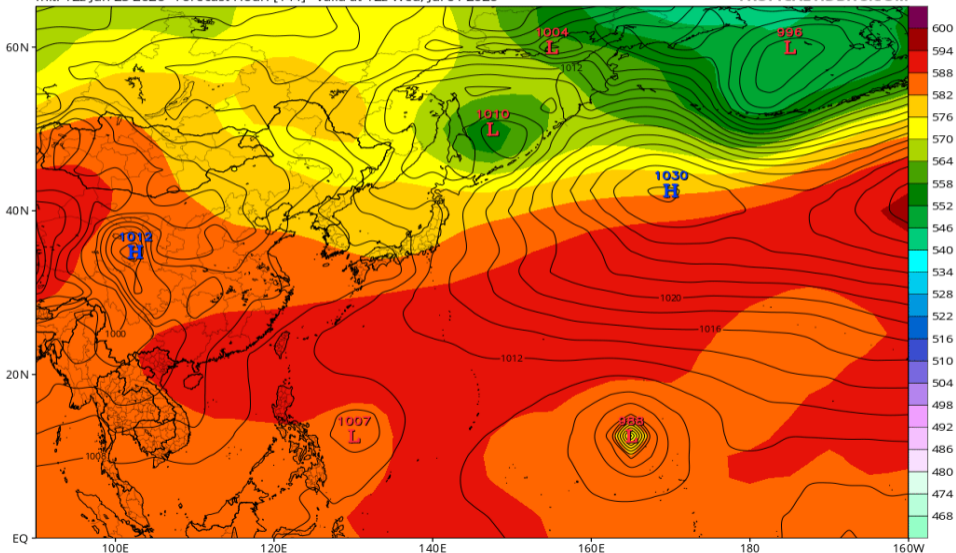


Z500/地上気圧配置 (JMA-GSM 07/01 12Z 予報)

JMA 500mb Geopotential Height (dam) & MSLP (mb)

Init: 12z Jun 25 2026 Forecast Hour: [144] valid at 12z Wed, Jul 01 2026

TROPICALTIDBITS.COM

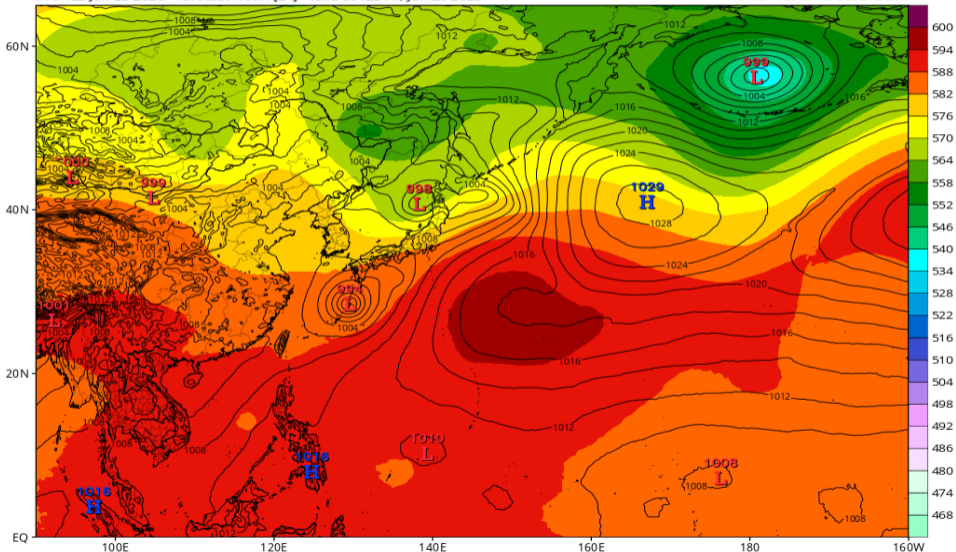


Z500/地上気圧配置 (AIFS 06/26 12Z 予報)

EC-AIFS 500mb Geopotential Height (dam) & MSLP (mb)

Init: 12z Jun 25 2026 Forecast Hour: [24] valid at 12z Fri, Jun 26 2026

TROPICALTIDBITS.COM

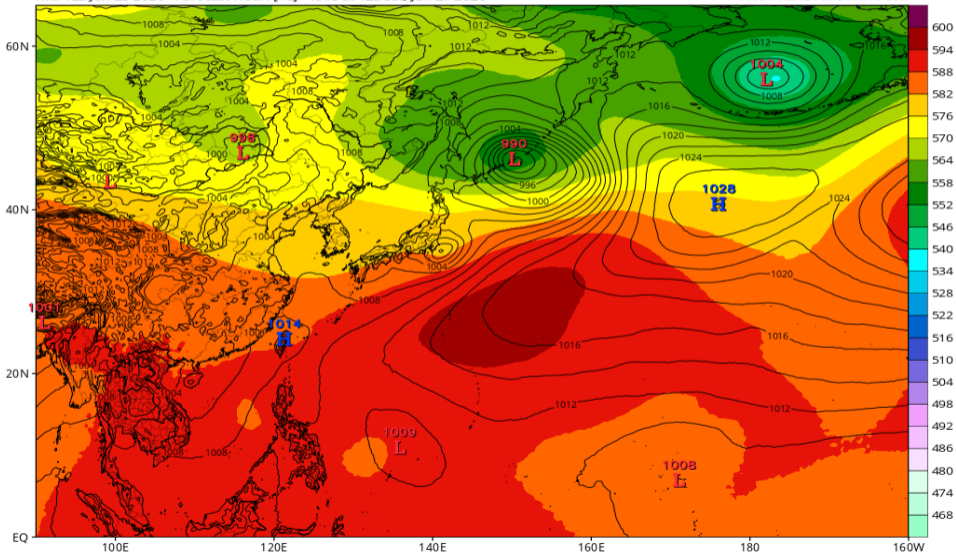


Z500/地上気圧配置 (AIFS 06/27 12Z 予報)

EC-AIFS 500mb Geopotential Height (dam) & MSLP (mb)

Init: 12z Jun 25 2026 Forecast Hour: [48] valid at 12z Sat, Jun 27 2026

TROPICALTIDBITS.COM

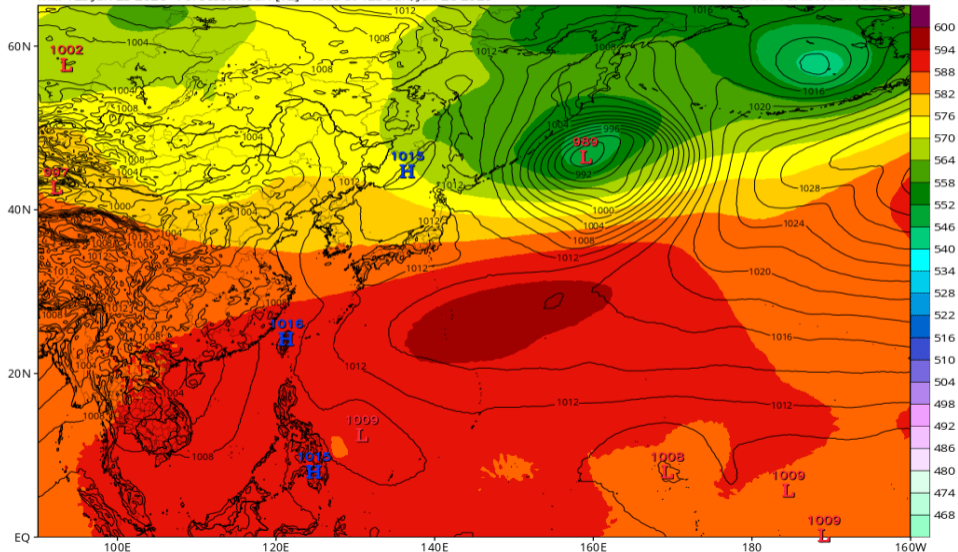


Z500/地上気圧配置 (AIFS 06/28 12Z 予報)

EC-AIFS 500mb Geopotential Height (dam) & MSLP (mb)

Init: 12z Jun 25 2026 Forecast Hour: [72] valid at 12z Sun, Jun 28 2026

TROPICALTIDBITS.COM

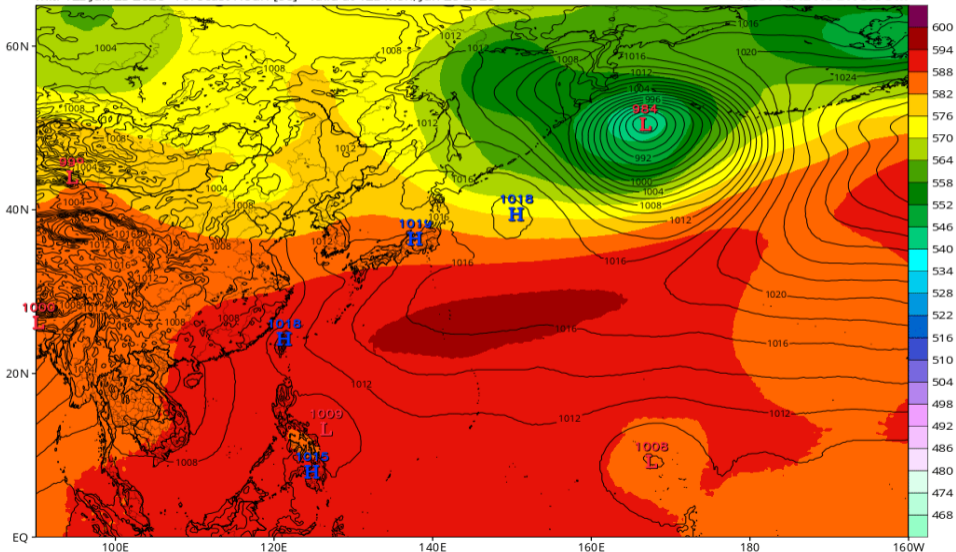


Z500/地上気圧配置 (AIFS 06/29 12Z 予報)

EC-AIFS 500mb Geopotential Height (dam) & MSLP (mb)

Init: 12z Jun 25 2026 Forecast Hour: [96] valid at 12z Mon, Jun 29 2026

TROPICALTIDBITS.COM

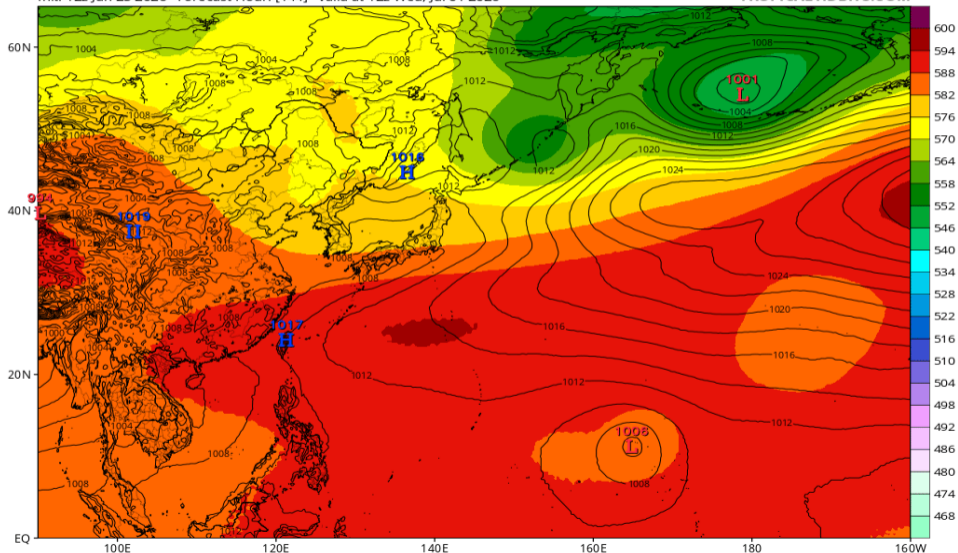


Z500/地上気圧配置 (AIFS 07/01 12Z 予報)

EC-AIFS 500mb Geopotential Height (dam) & MSLP (mb)

Init: 12z Jun 25 2026 Forecast Hour: [144] valid at 12z Wed, Jul 01 2026

TROPICALTIDBITS.COM

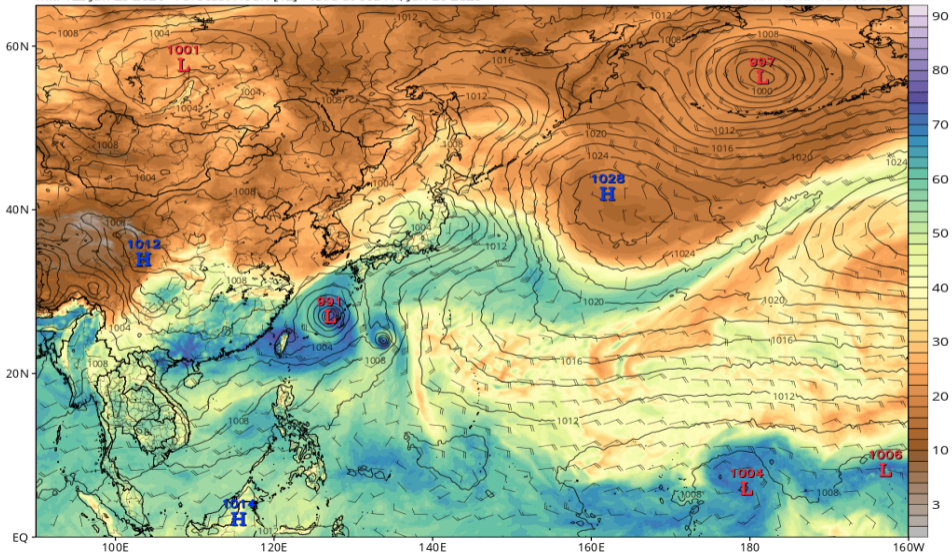


可降水量 (GFS 06/26 00Z 予報)

GFS MSLP (mb), Total Precipitable Water (mm), and 850mb Wind (kt)

Init: 12z Jun 25 2026 Forecast Hour: [12] valid at 00z Fri, Jun 26 2026

TROPICALTIDBITS.COM

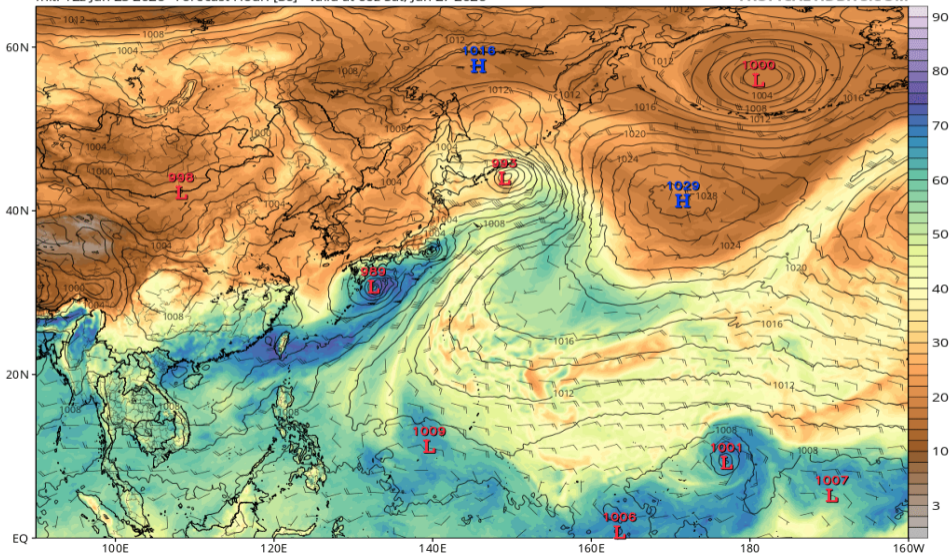


可降水量 (GFS 06/27 00Z 予報)

GFS MSLP (mb), Total Precipitable Water (mm), and 850mb Wind (kt)

Init: 12z Jun 25 2026 Forecast Hour: [36] valid at 00z Sat, Jun 27 2026

TROPICALTIDBITS.COM

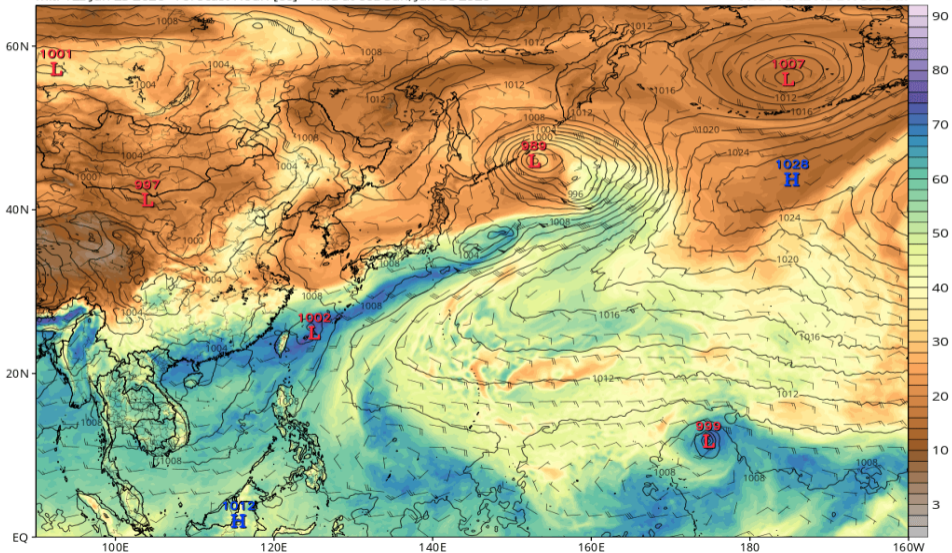


可降水量 (GFS 06/28 00Z 予報)

GFS MSLP (mb), Total Precipitable Water (mm), and 850mb Wind (kt)

Init: 12z Jun 25 2026 Forecast Hour: [60] valid at 00z Sun, Jun 28 2026

TROPICALTIDBITS.COM

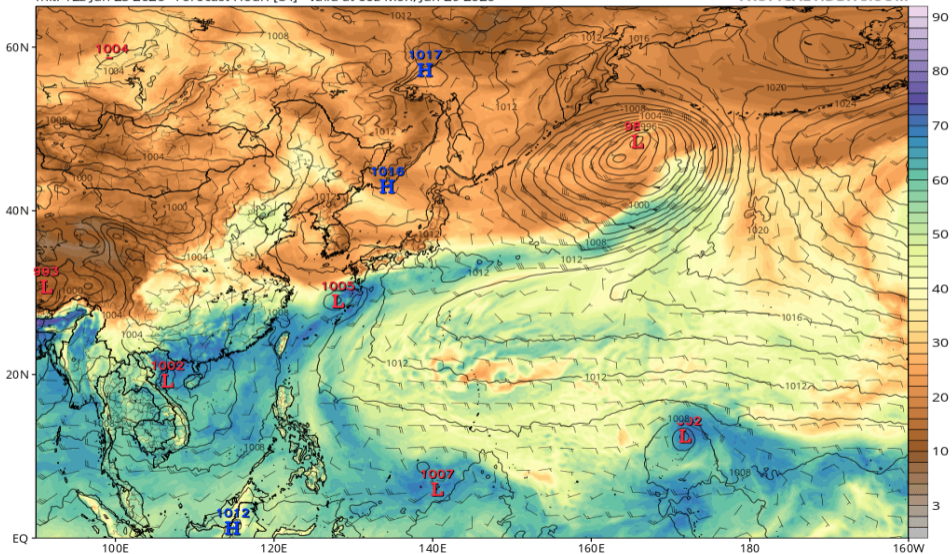


可降水量 (GFS 06/29 00Z 予報)

GFS MSLP (mb), Total Precipitable Water (mm), and 850mb Wind (kt)

Init: 12z Jun 25 2026 Forecast Hour: [84] valid at 00z Mon, Jun 29 2026

TROPICALTIDBITS.COM

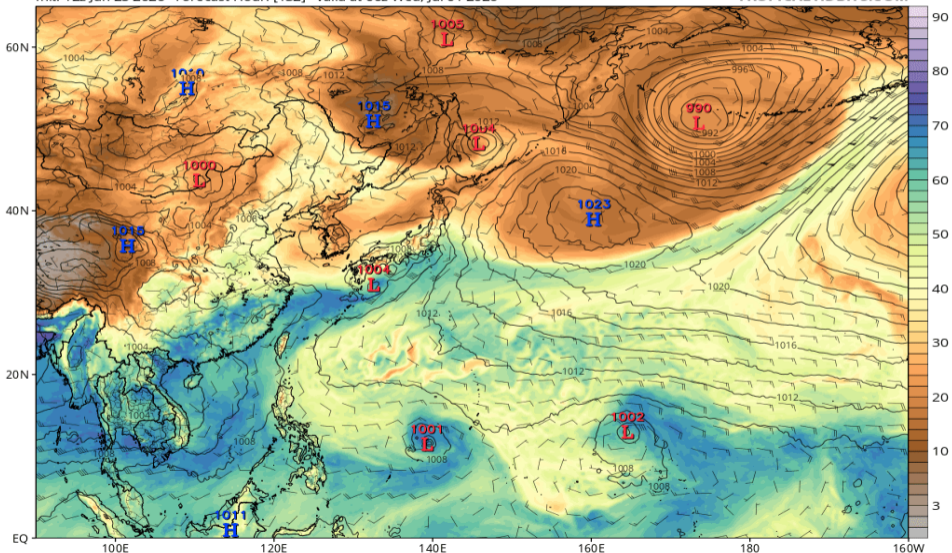


可降水量 (GFS 07/01 00Z 予報)

GFS MSLP (mb), Total Precipitable Water (mm), and 850mb Wind (kt)

Init: 12z Jun 25 2026 Forecast Hour: [132] valid at 00z Wed, Jul 01 2026

TROPICALTIDBITS.COM

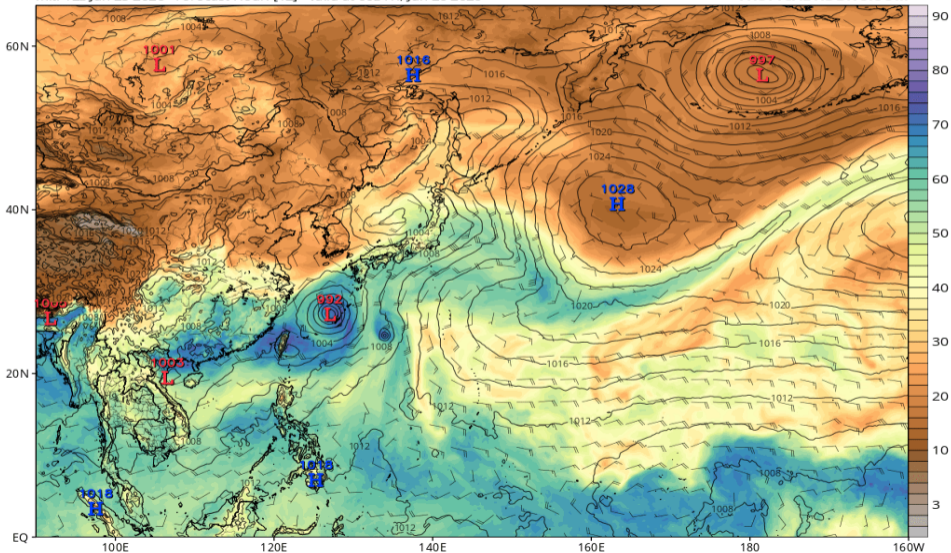


可降水量 (ECMWF 06/26 00Z 予報)

ECMWF MSLP (mb), Total Precipitable Water (mm), and 850mb Wind (kt)

Init: 12z Jun 25 2026 Forecast Hour: [12] valid at 00z Fri, Jun 26 2026

TROPICALTIDBITS.COM

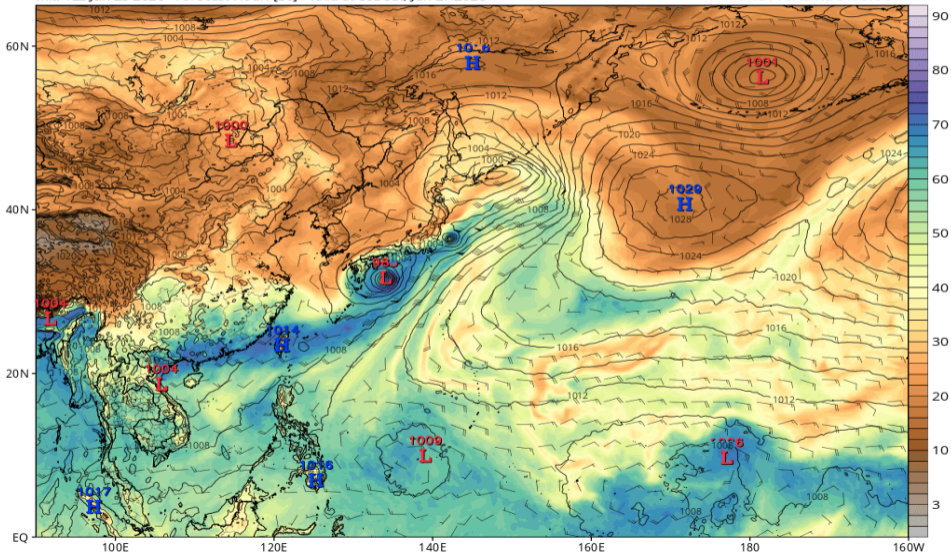


可降水量 (ECMWF 06/27 00Z 予報)

ECMWF MSLP (mb), Total Precipitable Water (mm), and 850mb Wind (kt)

Init: 12z Jun 25 2026 Forecast Hour: [36] valid at 00z Sat, Jun 27 2026

TROPICALTIDBITS.COM

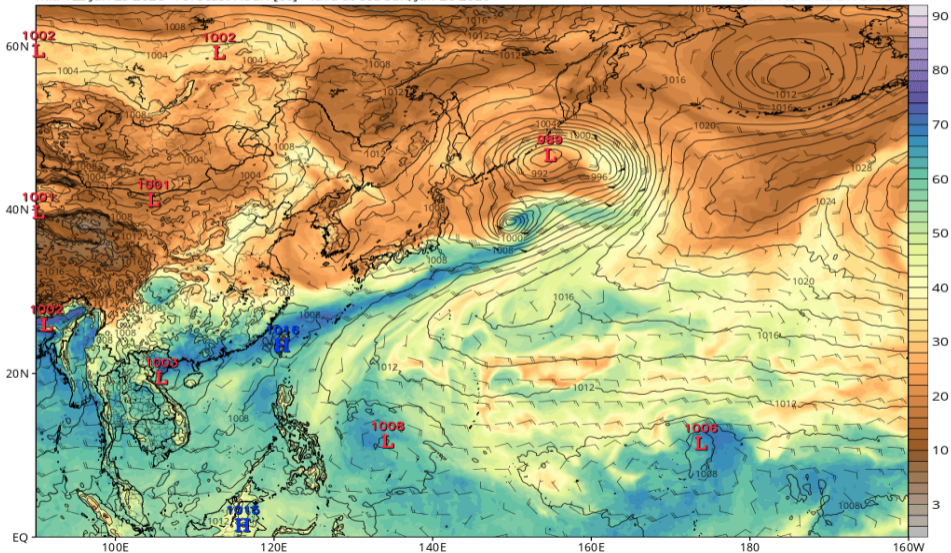


可降水量 (ECMWF 06/28 00Z 予報)

ECMWF MSLP (mb), Total Precipitable Water (mm), and 850mb Wind (kt)

Init: 12z Jun 25 2026 Forecast Hour: [60] valid at 00z Sun, Jun 28 2026

TROPICALTIDBITS.COM

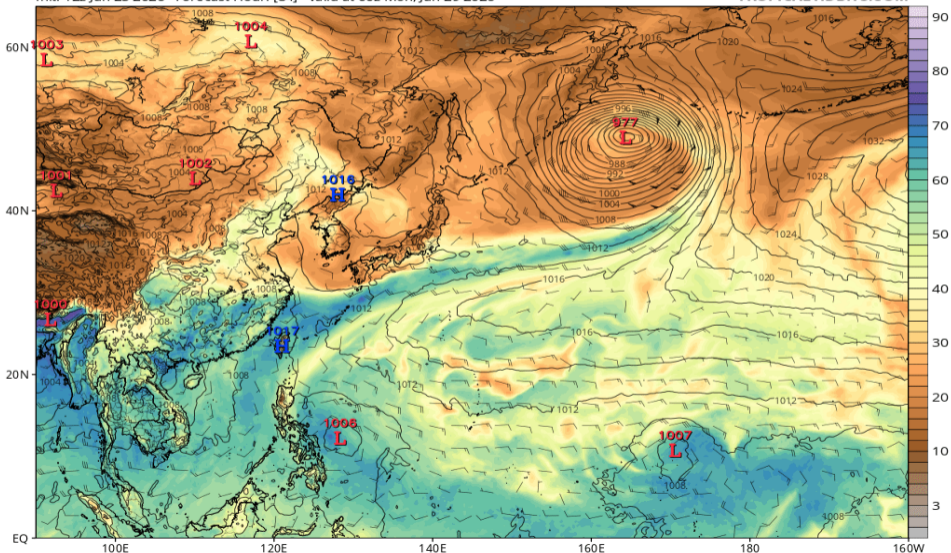


可降水量 (ECMWF 06/29 00Z 予報)

ECMWF MSLP (mb), Total Precipitable Water (mm), and 850mb Wind (kt)

Init: 12z Jun 25 2026 Forecast Hour: [84] valid at 00z Mon, Jun 29 2026

TROPICALTIDBITS.COM

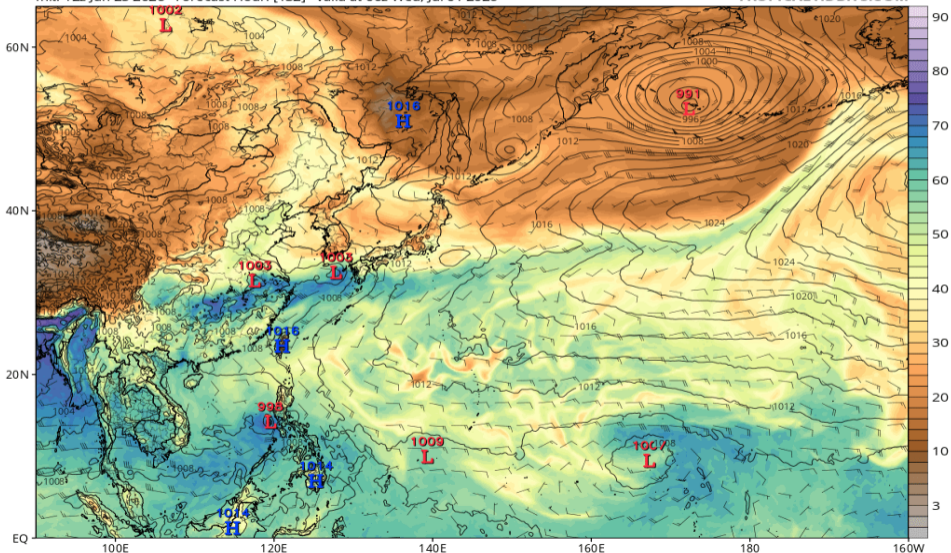


可降水量 (ECMWF 07/01 00Z 予報)

ECMWF MSLP (mb), Total Precipitable Water (mm), and 850mb Wind (kt)

Init: 12z Jun 25 2026 Forecast Hour: [132] valid at 00z Wed, Jul 01 2026

TROPICALTIDBITS.COM

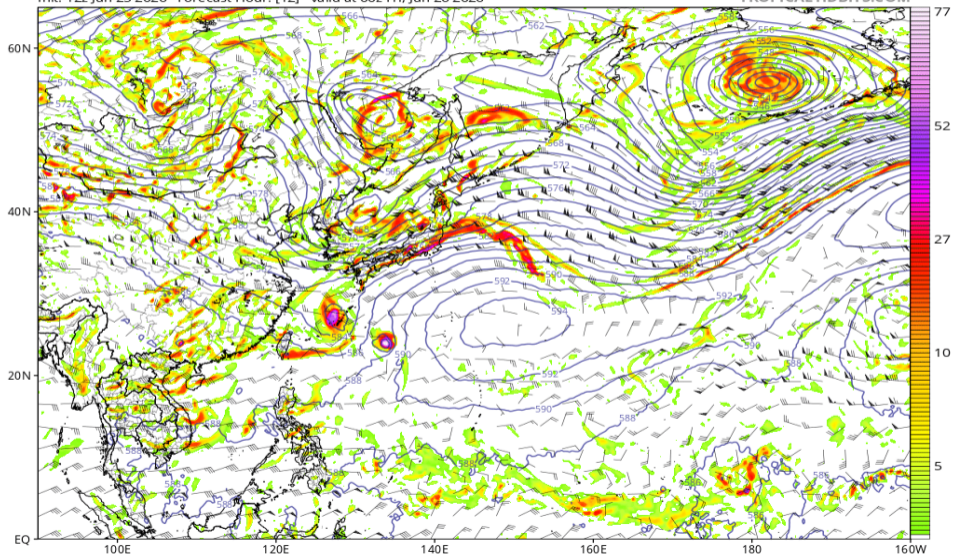


渦度 850, Z500, UV200 (GFS 06/26 00Z 予報)

GFS 850 hPa Cyclonic Vorticity (10^5 s^{-1}), 500 hPa Height (dam), and 200 hPa Wind (kt)

Init: 12z Jun 25 2026 Forecast Hour: [12] valid at 00z Fri, Jun 26 2026

TROPICALTIDBITS.COM

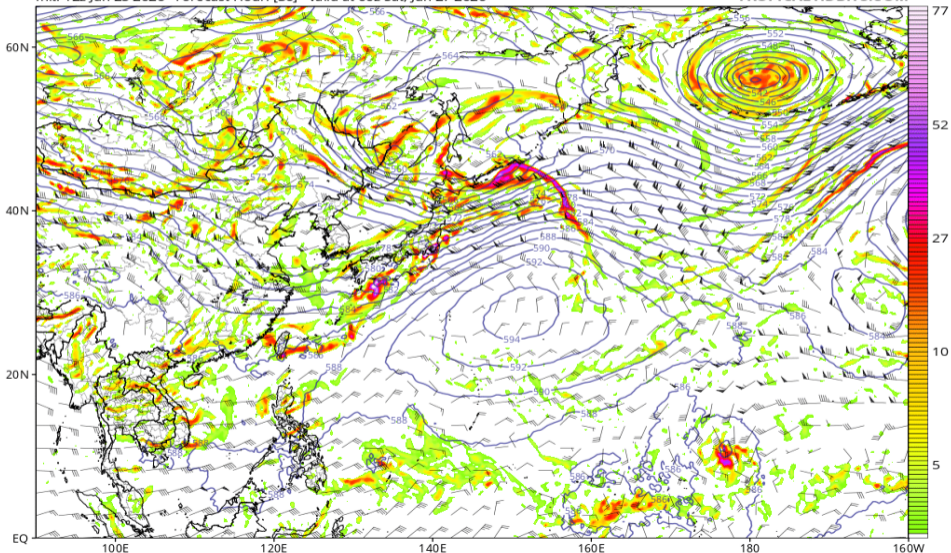


渦度 850, Z500, UV200 (GFS 06/27 00Z 予報)

GFS 850 hPa Cyclonic Vorticity (10^5 s^{-1}), 500 hPa Height (dam), and 200 hPa Wind (kt)

Init: 12z Jun 25 2026 Forecast Hour: [36] valid at 00z Sat, Jun 27 2026

TROPICALTIDBITS.COM

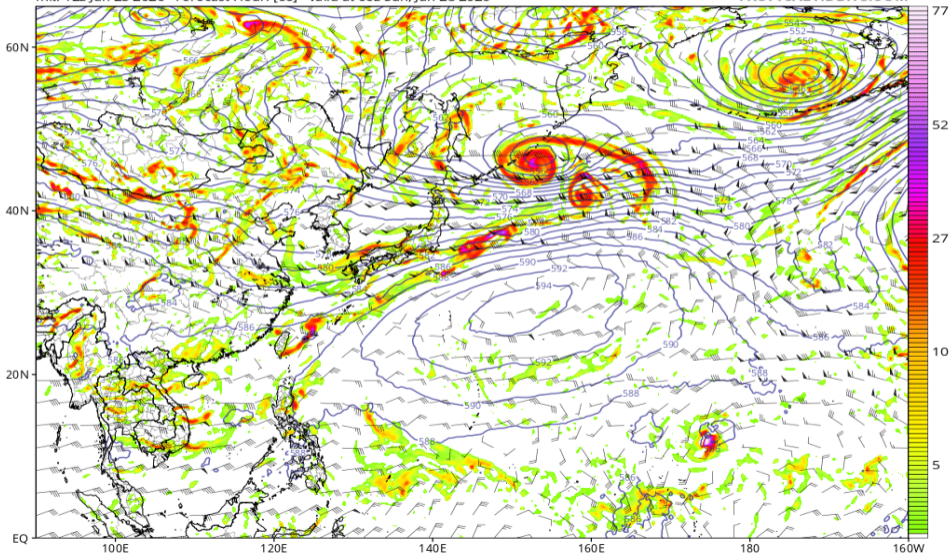


渦度 850, Z500, UV200 (GFS 06/28 00Z 予報)

GFS 850 hPa Cyclonic Vorticity (10^5 s^{-1}), 500 hPa Height (dam), and 200 hPa Wind (kt)

Init: 12z Jun 25 2026 Forecast Hour: [60] valid at 00z Sun, Jun 28 2026

TROPICALTIDBITS.COM

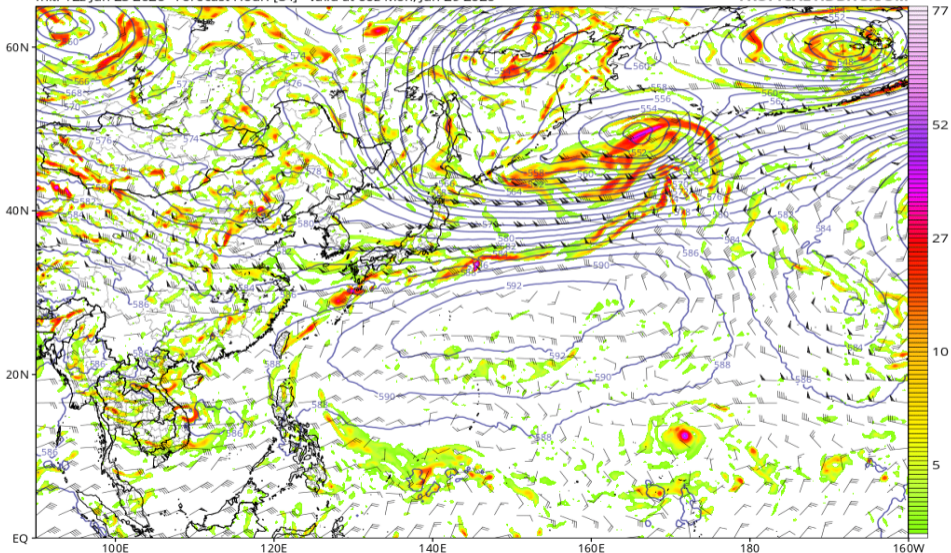


渦度 850, Z500, UV200 (GFS 06/29 00Z 予報)

GFS 850 hPa Cyclonic Vorticity (10^5 s^{-1}), 500 hPa Height (dam), and 200 hPa Wind (kt)

Init: 12z Jun 25 2026 Forecast Hour: [84] valid at 00z Mon, Jun 29 2026

TROPICALTIDBITS.COM

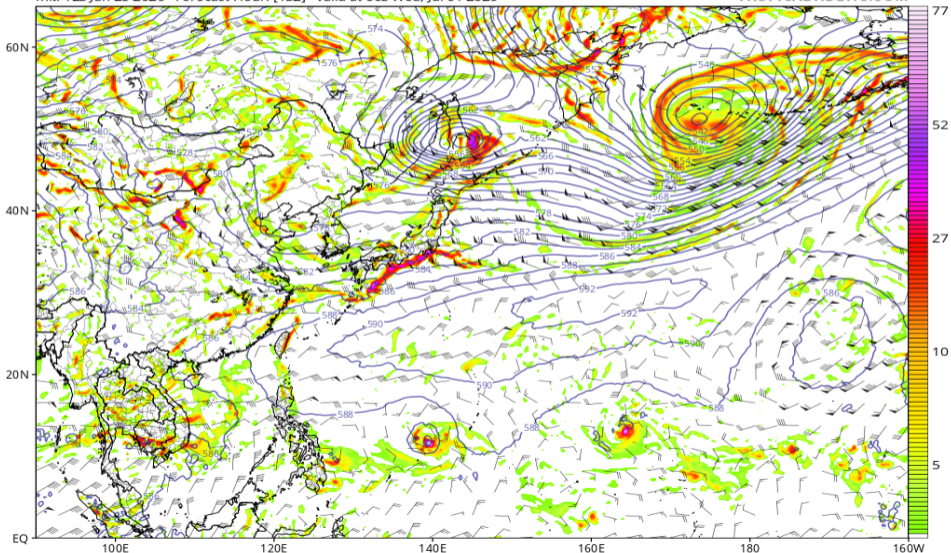


渦度 850, Z500, UV200 (GFS 07/01 00Z 予報)

GFS 850 hPa Cyclonic Vorticity (10^5 s^{-1}), 500 hPa Height (dam), and 200 hPa Wind (kt)

Init: 12z Jun 25 2026 Forecast Hour: [132] valid at 00z Wed, Jul 01 2026

TROPICALTIDBITS.COM

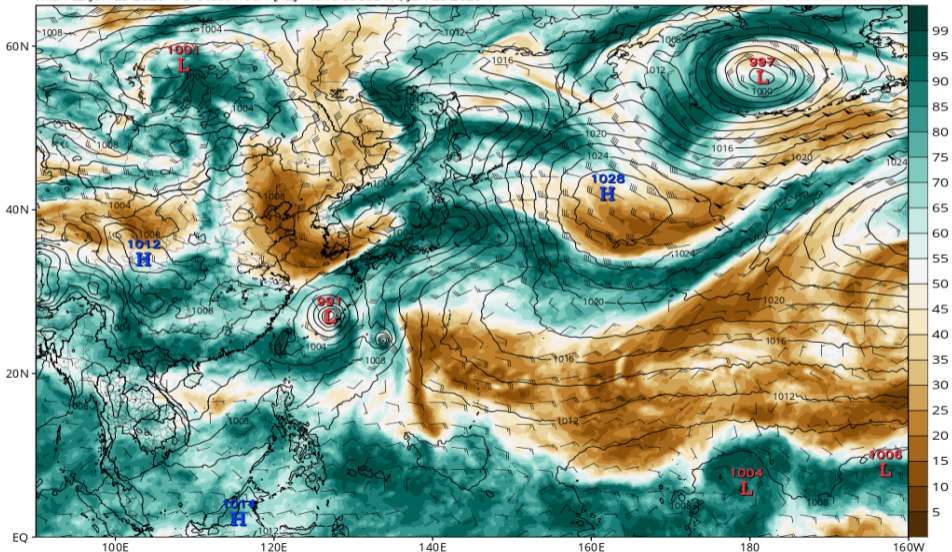


RH700-300 (GFS 06/26 00Z 予報)

GFS MSLP (mb), 700-300 hPa Relative Humidity (%), and 700-300 hPa Wind (kt)

Init: 12z Jun 25 2026 Forecast Hour: [12] valid at 00z Fri, Jun 26 2026

TROPICALTIDBITS.COM

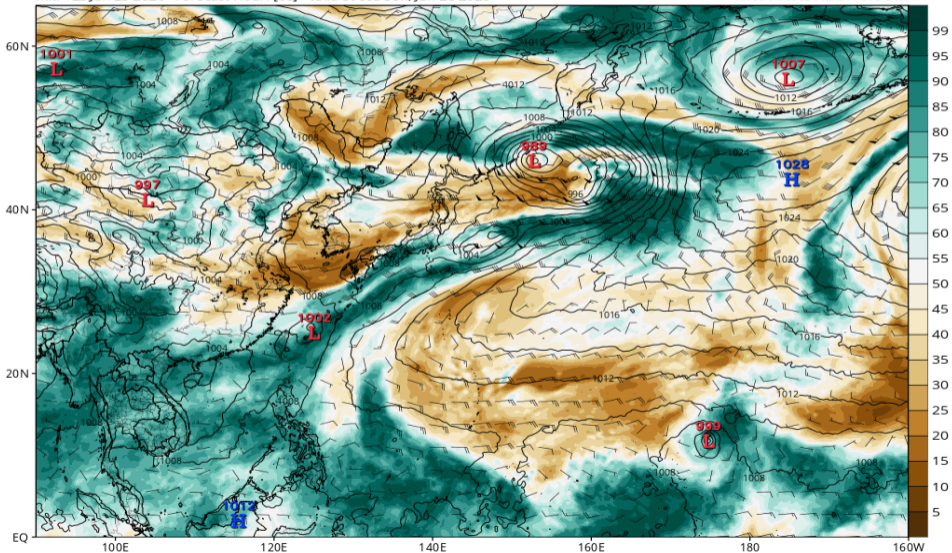


RH700-300 (GFS 06/28 00Z 予報)

GFS MSLP (mb), 700-300 hPa Relative Humidity (%), and 700-300 hPa Wind (kt)

Init: 12z Jun 25 2026 Forecast Hour: [60] valid at 00z Sun, Jun 28 2026

TROPICALTIDBITS.COM

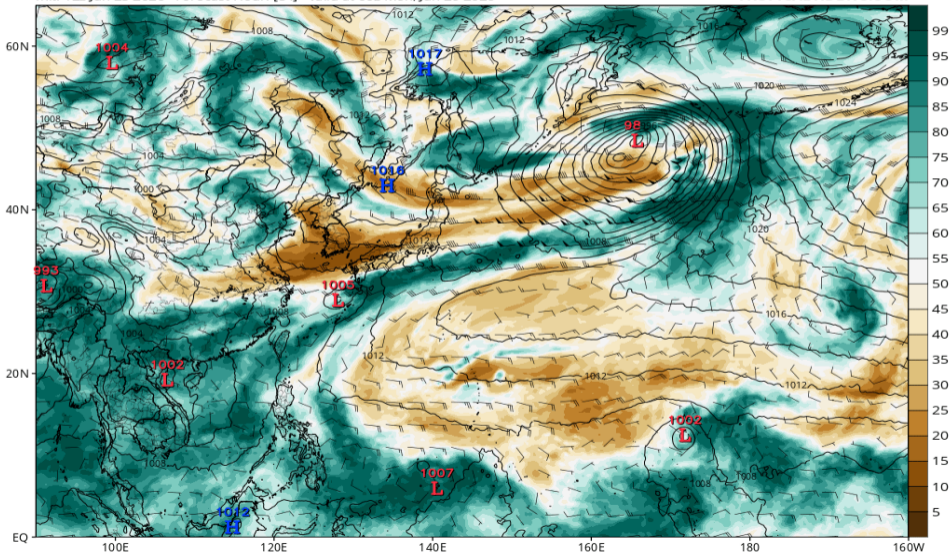


RH700-300 (GFS 06/29 00Z 予報)

GFS MSLP (mb), 700-300 hPa Relative Humidity (%), and 700-300 hPa Wind (kt)

Init: 12z Jun 25 2026 Forecast Hour: [84] valid at 00z Mon, Jun 29 2026

TROPICALTIDBITS.COM

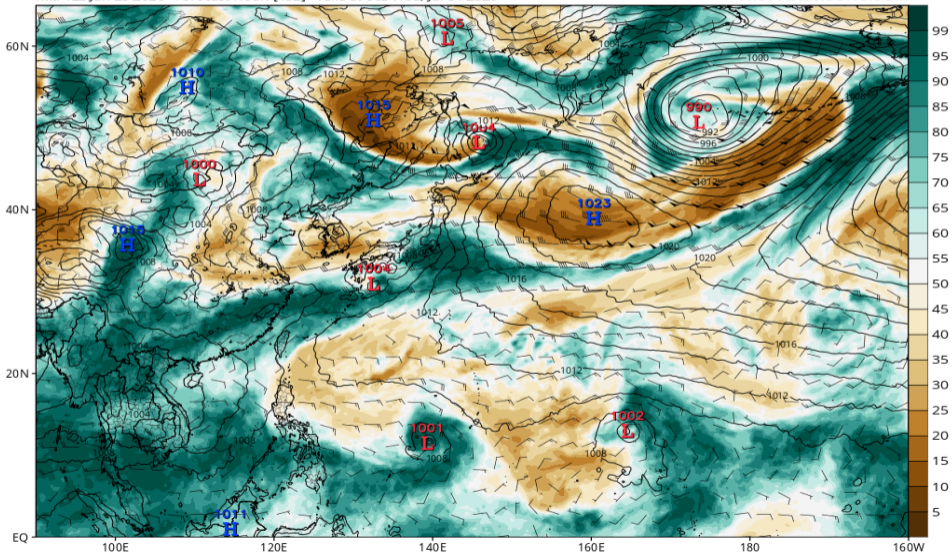


RH700-300 (GFS 07/01 00Z 予報)

GFS MSLP (mb), 700-300 hPa Relative Humidity (%), and 700-300 hPa Wind (kt)

Init: 12z Jun 25 2026 Forecast Hour: [132] valid at 00z Wed, Jul 01 2026

TROPICALTIDBITS.COM

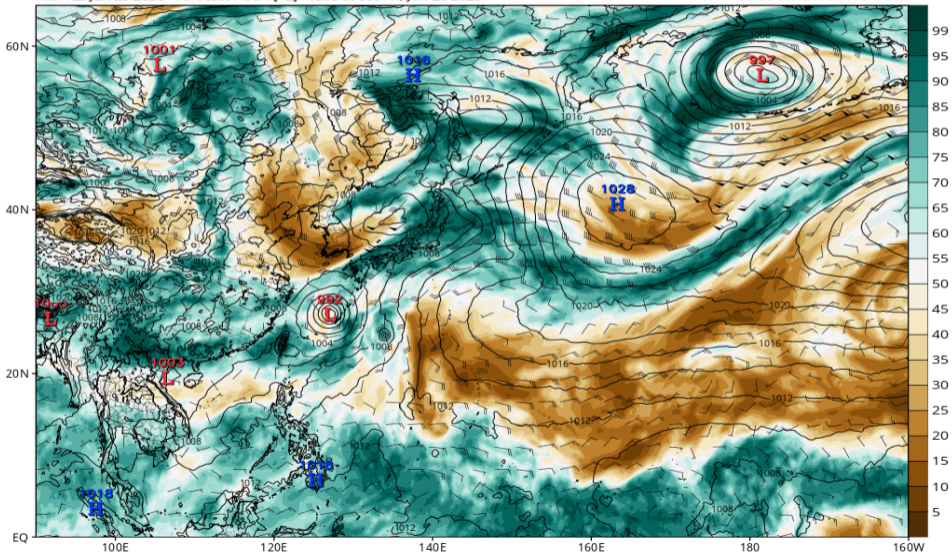


RH700-300 (ECMWF 06/26 00Z 予報)

ECMWF MSLP (mb), 700-300 hPa Relative Humidity (%), and 700-300 hPa Wind (kt)

Init: 12z Jun 25 2026 Forecast Hour: [12] valid at 00z Fri, Jun 26 2026

TROPICALTIDBITS.COM

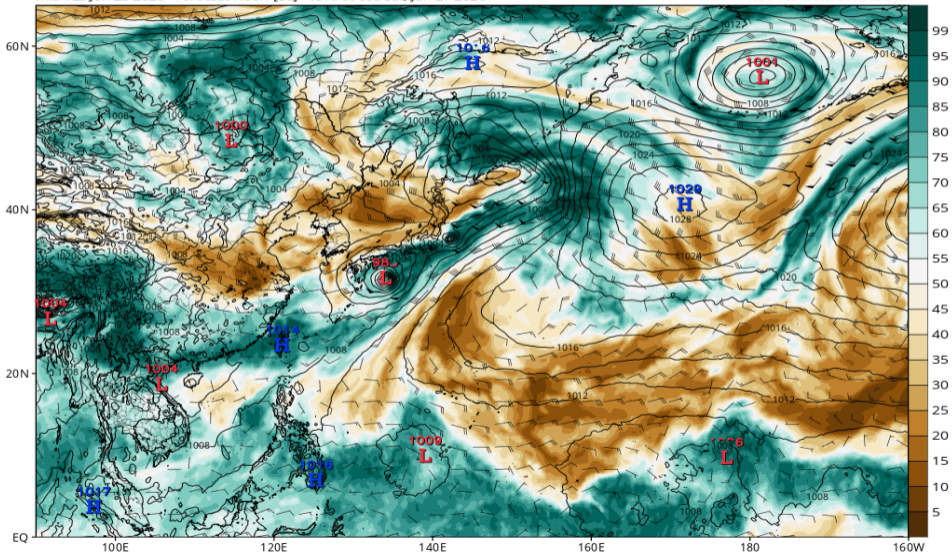


RH700-300 (ECMWF 06/27 00Z 予報)

ECMWF MSLP (mb), 700-300 hPa Relative Humidity (%), and 700-300 hPa Wind (kt)

Init: 12z Jun 25 2026 Forecast Hour: [36] valid at 00z Sat, Jun 27 2026

TROPICALTIDBITS.COM

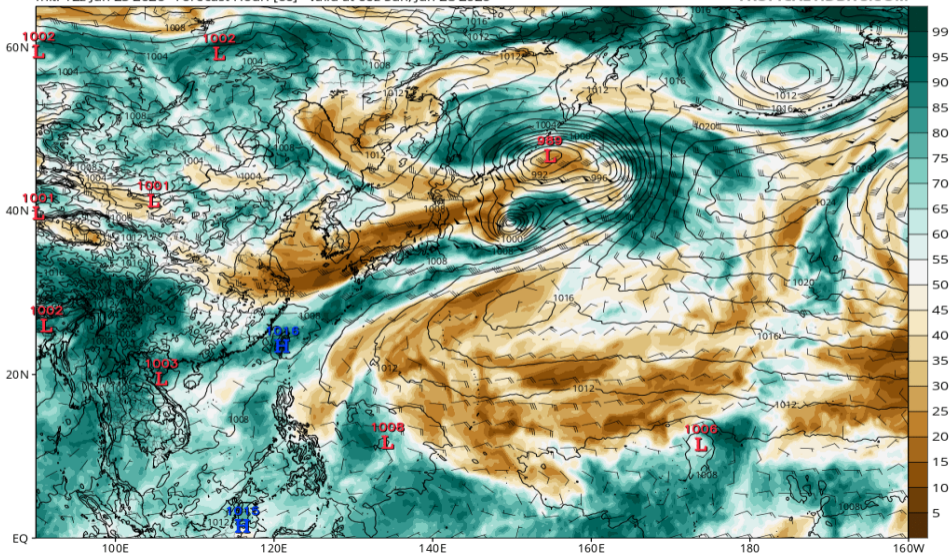


RH700-300 (ECMWF 06/28 00Z 予報)

ECMWF MSLP (mb), 700-300 hPa Relative Humidity (%), and 700-300 hPa Wind (kt)

Init: 12z Jun 25 2026 Forecast Hour: [60] valid at 00z Sun, Jun 28 2026

TROPICALTIDBITS.COM

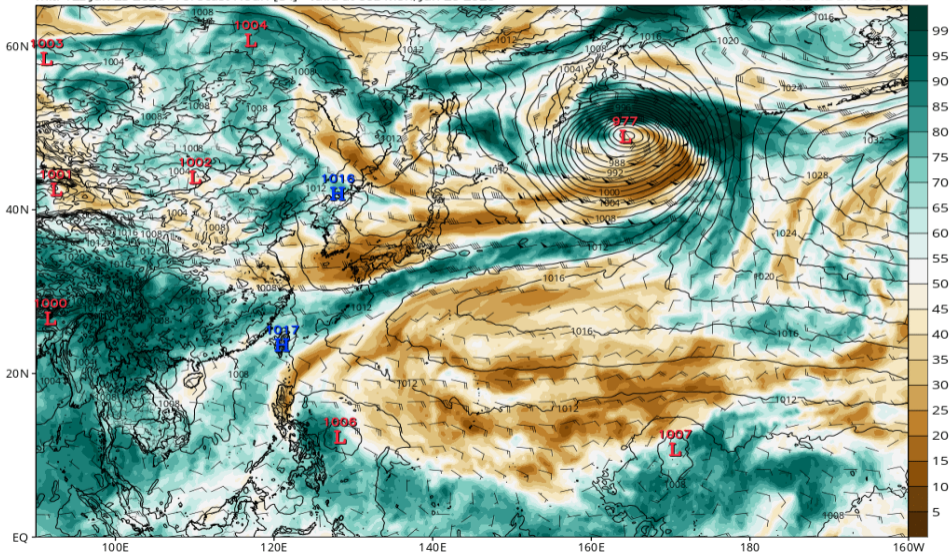


RH700-300 (ECMWF 06/29 00Z 予報)

ECMWF MSLP (mb), 700-300 hPa Relative Humidity (%), and 700-300 hPa Wind (kt)

Init: 12z Jun 25 2026 Forecast Hour: [84] valid at 00z Mon, Jun 29 2026

TROPICALTIDBITS.COM

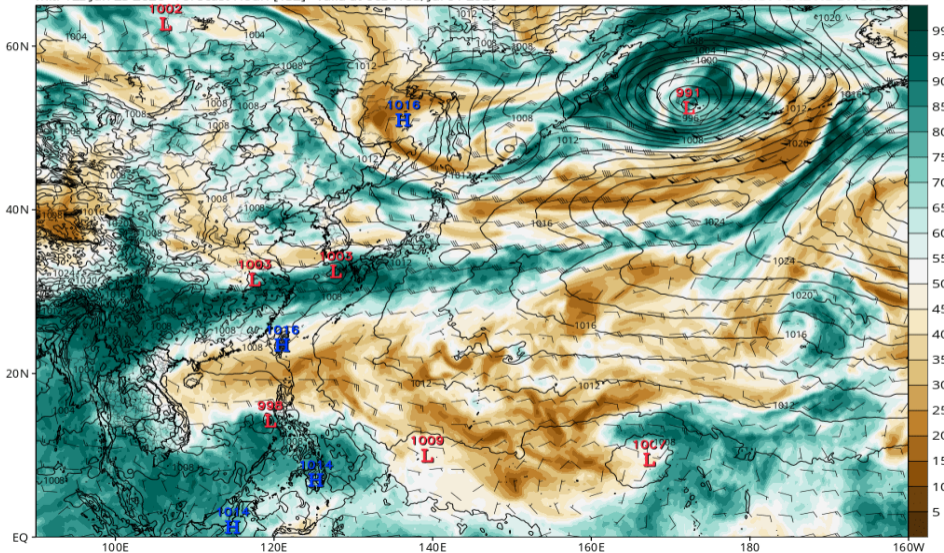


RH700-300 (ECMWF 07/01 00Z 予報)

ECMWF MSLP (mb), 700-300 hPa Relative Humidity (%), and 700-300 hPa Wind (kt)

Init: 12z Jun 25 2026 Forecast Hour: [132] valid at 00z Wed, Jul 01 2026

TROPICALTIDBITS.COM

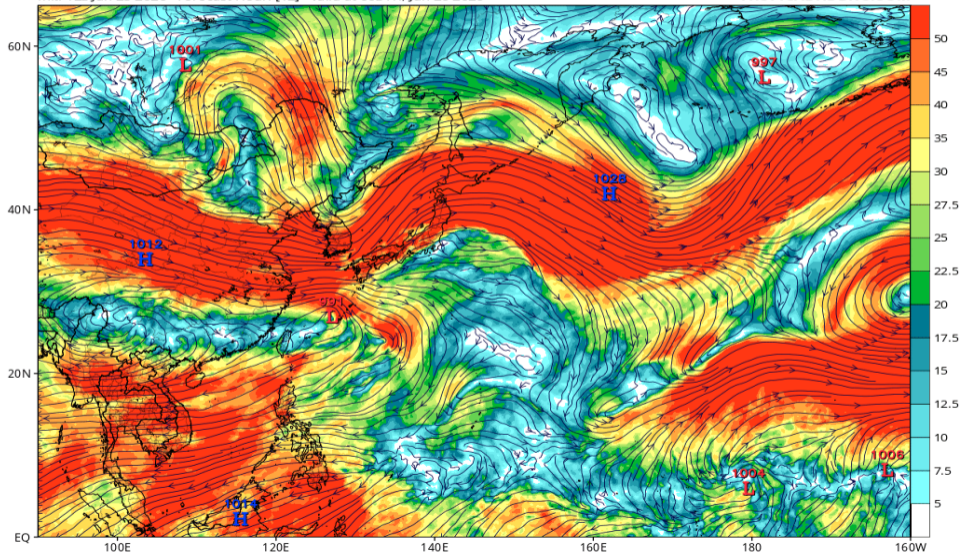


Wshear850-200 (GFS 06/26 00Z 予報)

GFS 200mb-850mb Wind Shear (knots) & Low Centers (mb)

Init: 12z Jun 25 2026 Forecast Hour: [12] valid at 00z Fri, Jun 26 2026

TROPICALTIDBITS.COM

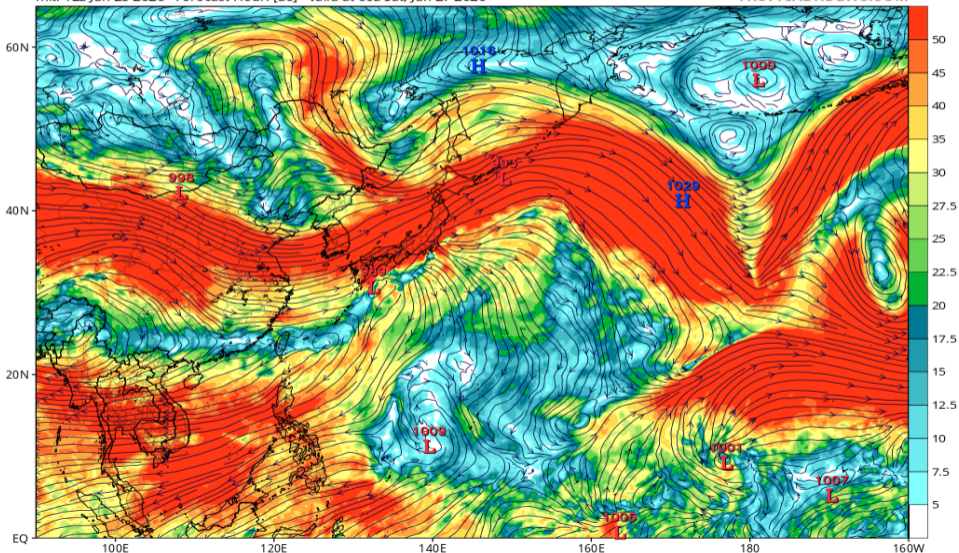


Wshear850-200 (GFS 06/27 00Z 予報)

GFS 200mb-850mb Wind Shear (knots) & Low Centers (mb)

Init: 12z Jun 25 2026 Forecast Hour: [36] valid at 00z Sat, Jun 27 2026

TROPICALTIDBITS.COM

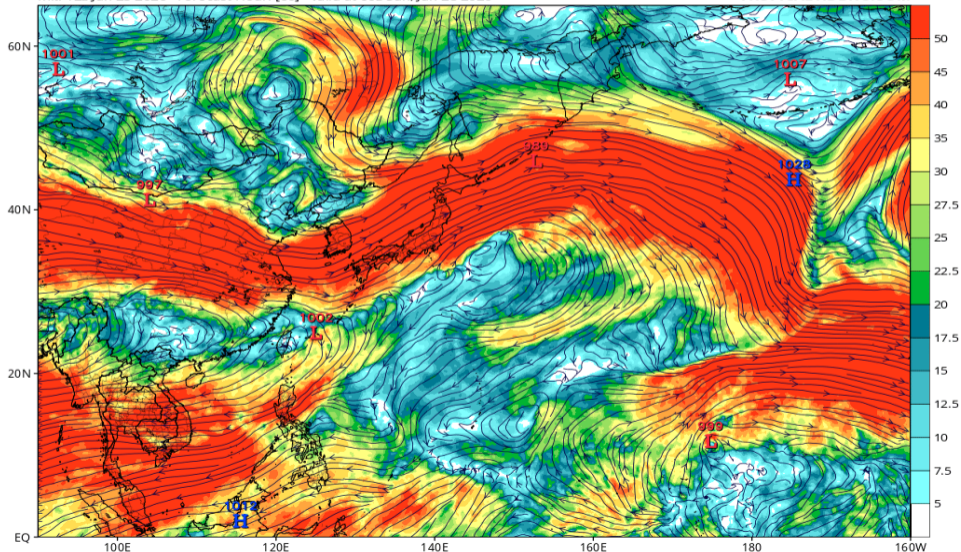


Wshear850-200 (GFS 06/28 00Z 予報)

GFS 200mb-850mb Wind Shear (knots) & Low Centers (mb)

Init: 12z Jun 25 2026 Forecast Hour: [60] valid at 00z Sun, Jun 28 2026

TROPICALTIDBITS.COM

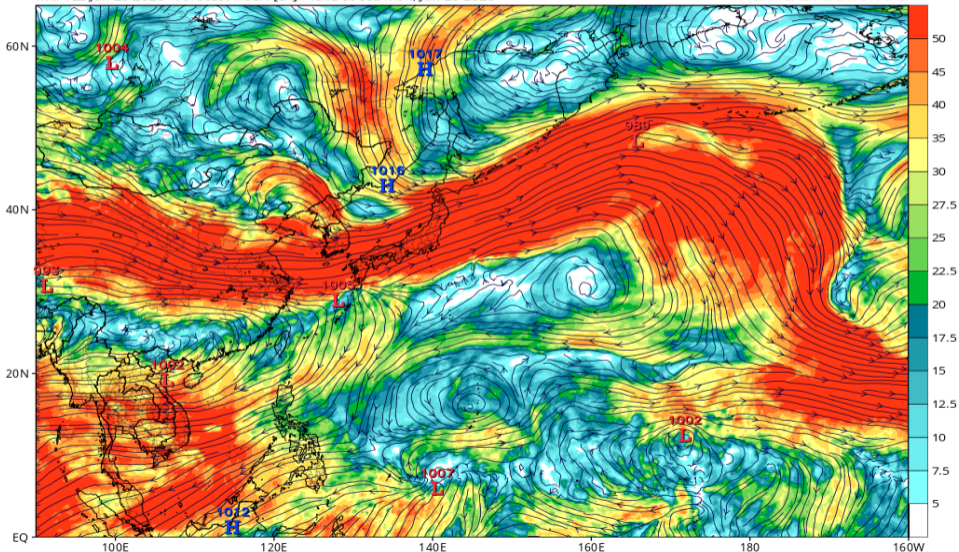


Wshear850-200 (GFS 06/29 00Z 予報)

GFS 200mb-850mb Wind Shear (knots) & Low Centers (mb)

Init: 12z Jun 25 2026 Forecast Hour: [84] valid at 00z Mon, Jun 29 2026

TROPICALTIDBITS.COM

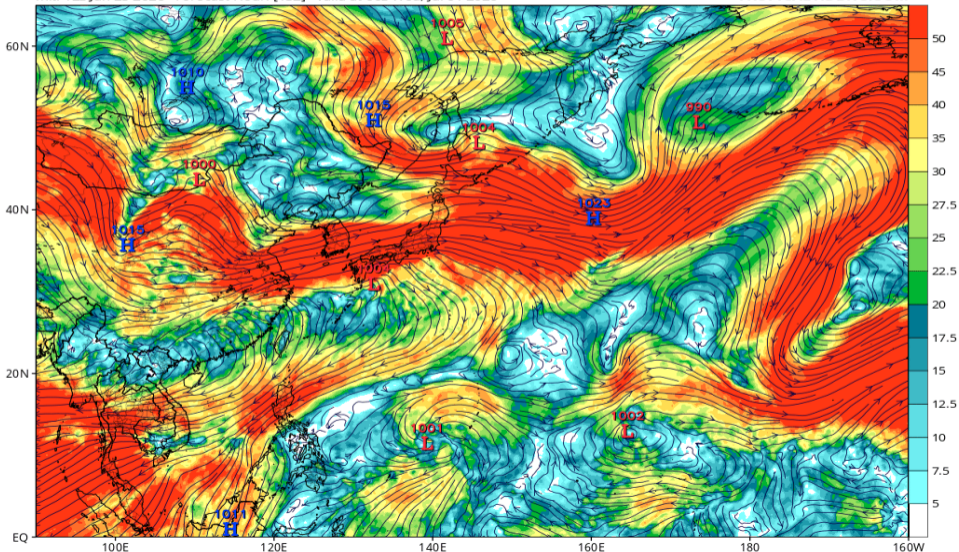


Wshear850-200 (GFS 07/01 00Z 予報)

GFS 200mb-850mb Wind Shear (knots) & Low Centers (mb)

Init: 12z Jun 25 2026 Forecast Hour: [132] valid at 00z Wed, Jul 01 2026

TROPICALTIDBITS.COM

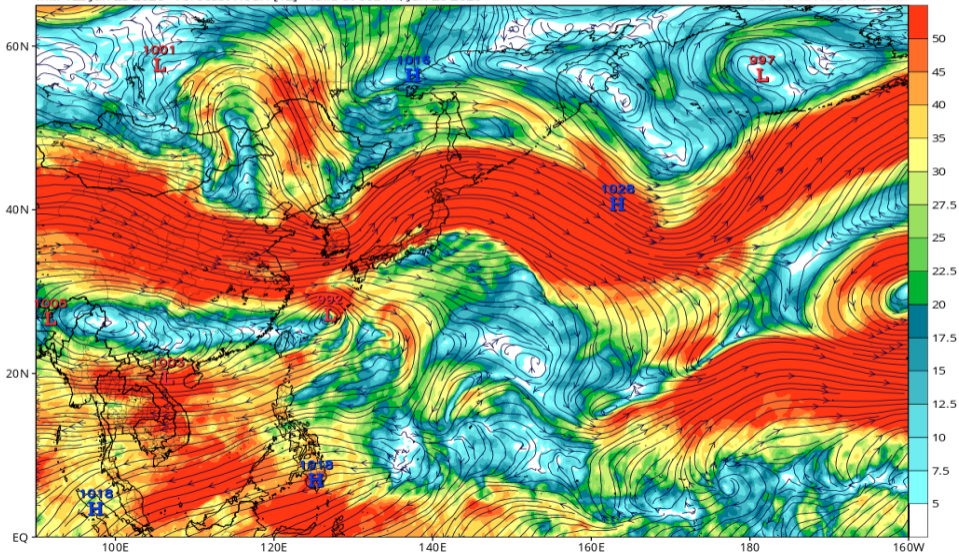


Wshear850-200 (ECMWF 06/26 00Z 予報)

ECMWF 200mb-850mb Wind Shear (knots) & Low Centers (mb)

Init: 12z Jun 25 2026 Forecast Hour: [12] valid at 00z Fri, Jun 26 2026

TROPICALTIDBITS.COM

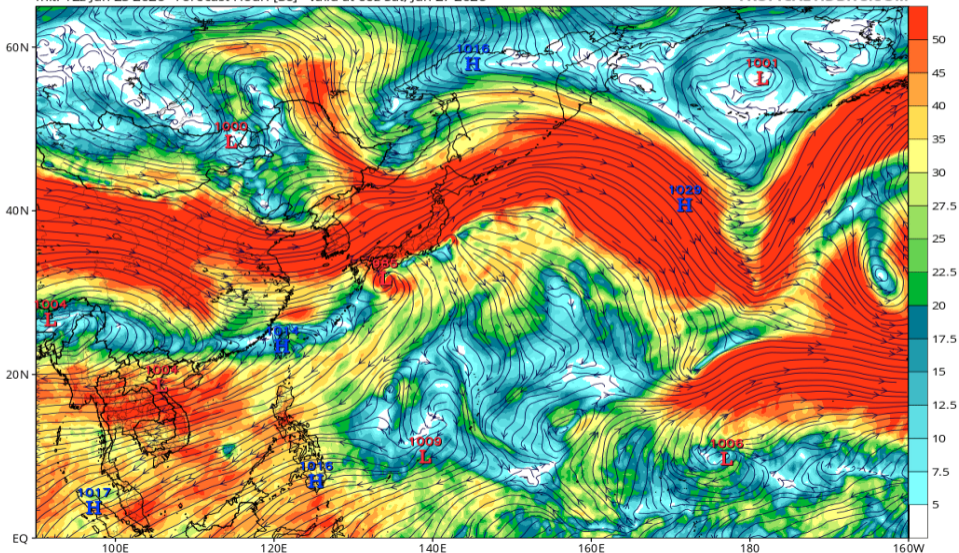


Wshear850-200 (ECMWF 06/27 00Z 予報)

ECMWF 200mb-850mb Wind Shear (knots) & Low Centers (mb)

Init: 12z Jun 25 2026 Forecast Hour: [36] valid at 00z Sat, Jun 27 2026

TROPICALTIDBITS.COM

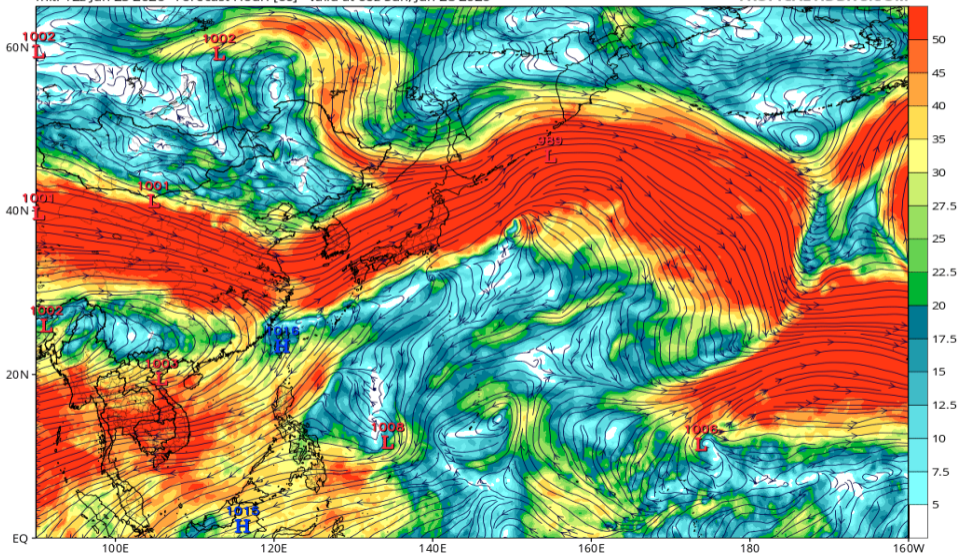


Wshear850-200 (ECMWF 06/28 00Z 予報)

ECMWF 200mb-850mb Wind Shear (knots) & Low Centers (mb)

Init: 12z Jun 25 2026 Forecast Hour: [60] valid at 00z Sun, Jun 28 2026

TROPICALTIDBITS.COM

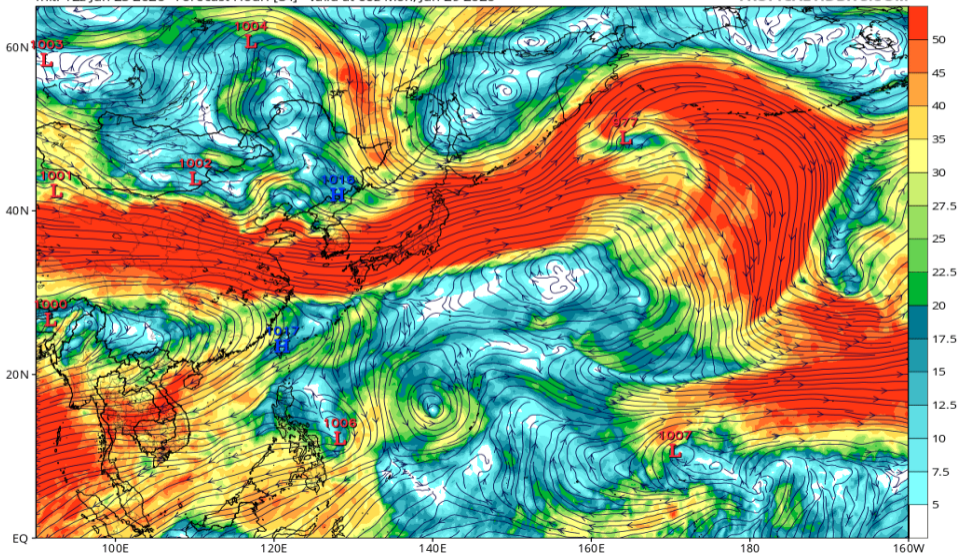


Wshear850-200 (ECMWF 06/29 00Z 予報)

ECMWF 200mb-850mb Wind Shear (knots) & Low Centers (mb)

Init: 12z Jun 25 2026 Forecast Hour: [84] valid at 00z Mon, Jun 29 2026

TROPICALTIDBITS.COM

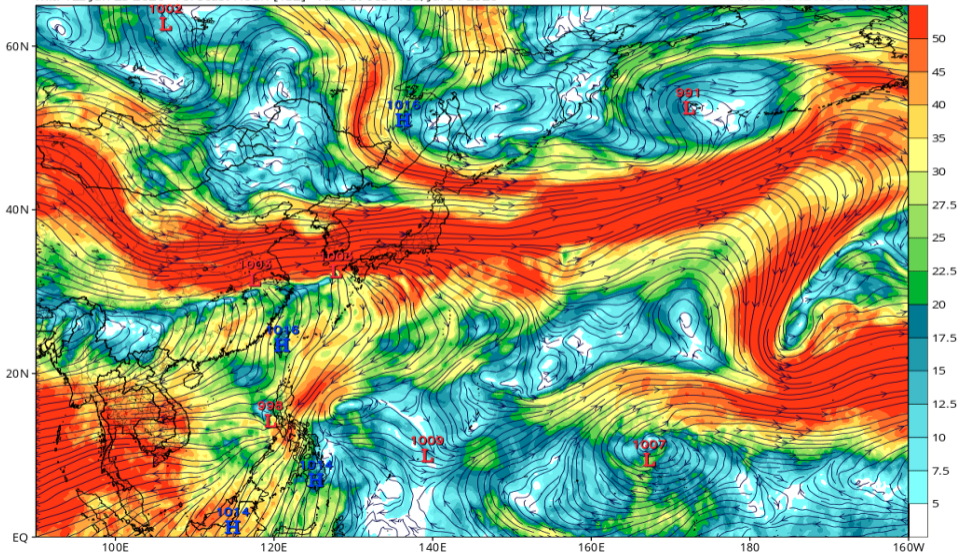


Wshear850-200 (ECMWF 07/01 00Z 予報)

ECMWF 200mb-850mb Wind Shear (knots) & Low Centers (mb)

Init: 12z Jun 25 2026 Forecast Hour: [132] valid at 00z Wed, Jul 01 2026

TROPICALTIDBITS.COM

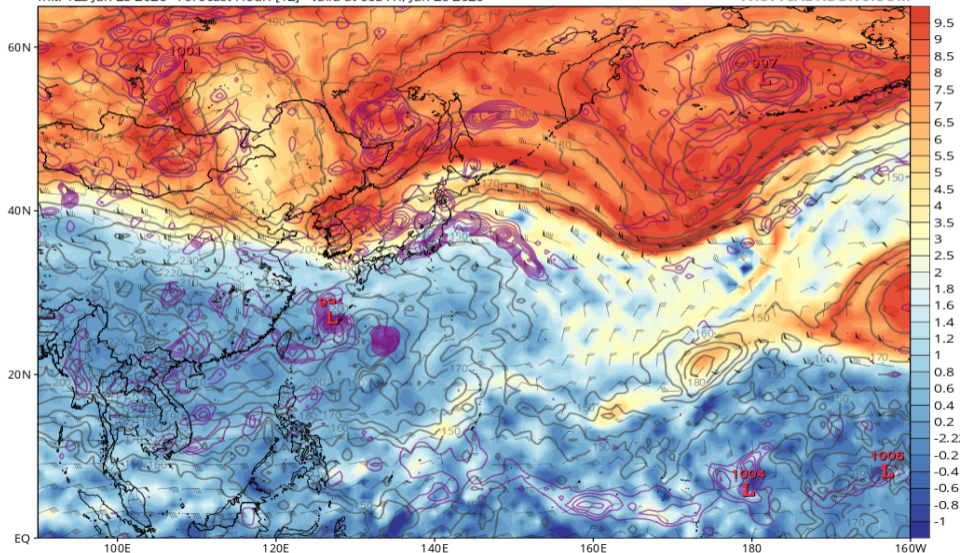


渦位 355K (GFS 06/26 00Z 予報)

GFS 355K Cyclonic PV (PVU), Wind (kt), Pressure (hPa, gray), & 850 hPa Cyclonic Vorticity (purple) [1.0°x1.0° grid]

Init: 12z Jun 25 2026 Forecast Hour: [12] valid at 00z Fri, Jun 26 2026

TROPICALTIDBITS.COM

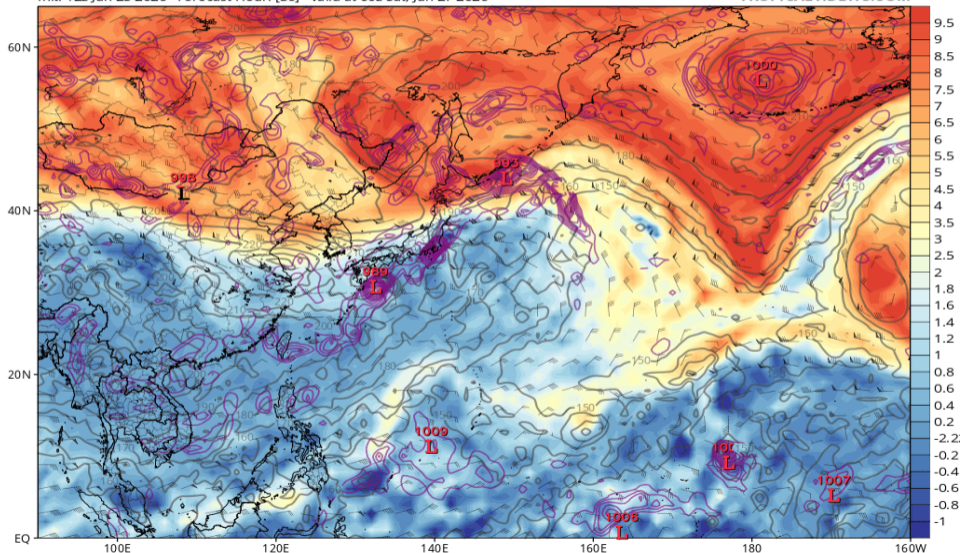


渦位 355K (GFS 06/27 00Z 予報)

GFS 355K Cyclonic PV (PVU), Wind (kt), Pressure (hPa, gray), & 850 hPa Cyclonic Vorticity (purple) [1.0°x1.0° grid]

Init: 12z Jun 25 2026 Forecast Hour: [36] valid at 00z Sat, Jun 27 2026

TROPICALTIDBITS.COM

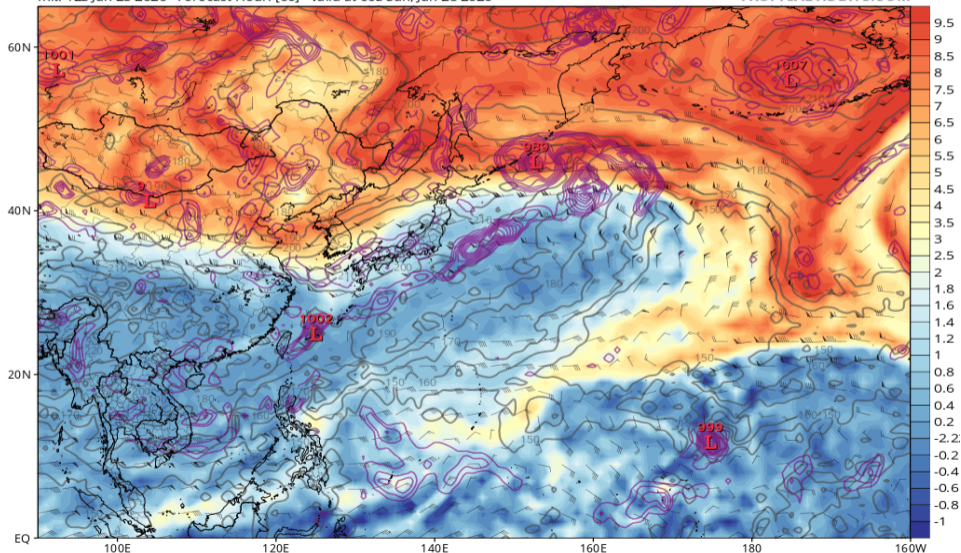


渦位 355K (GFS 06/28 00Z 予報)

GFS 355K Cyclonic PV (PVU), Wind (kt), Pressure (hPa, gray), & 850 hPa Cyclonic Vorticity (purple) [1.0°x1.0° grid]

Init: 12z Jun 25 2026 Forecast Hour: [60] valid at 00z Sun, Jun 28 2026

TROPICALTIDBITS.COM

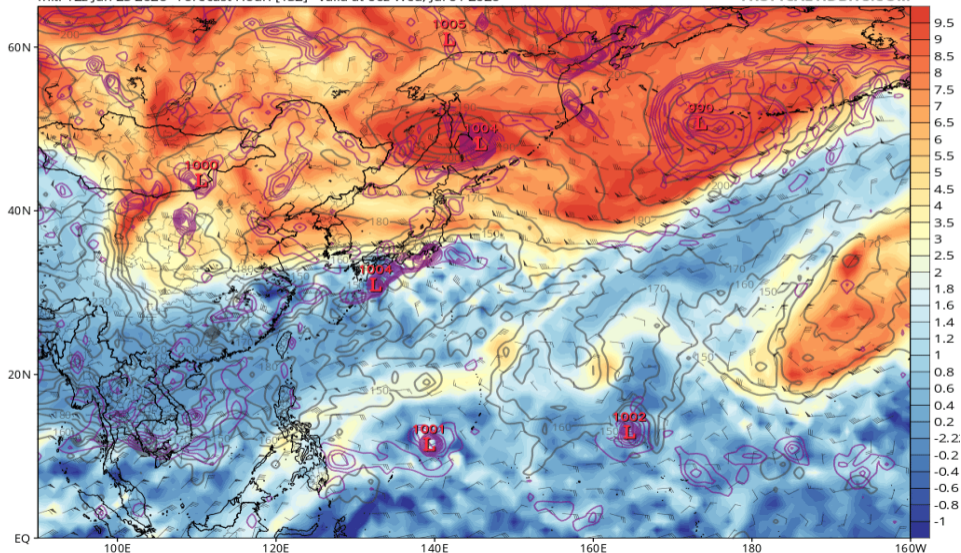


渦位 355K (GFS 07/01 00Z 予報)

GFS 355K Cyclonic PV (PVU), Wind (kt), Pressure (hPa, gray), & 850 hPa Cyclonic Vorticity (purple) [1.0°x1.0° grid]

Init: 12z Jun 25 2026 Forecast Hour: [132] valid at 00z Wed, Jul 01 2026

TROPICALTIDBITS.COM



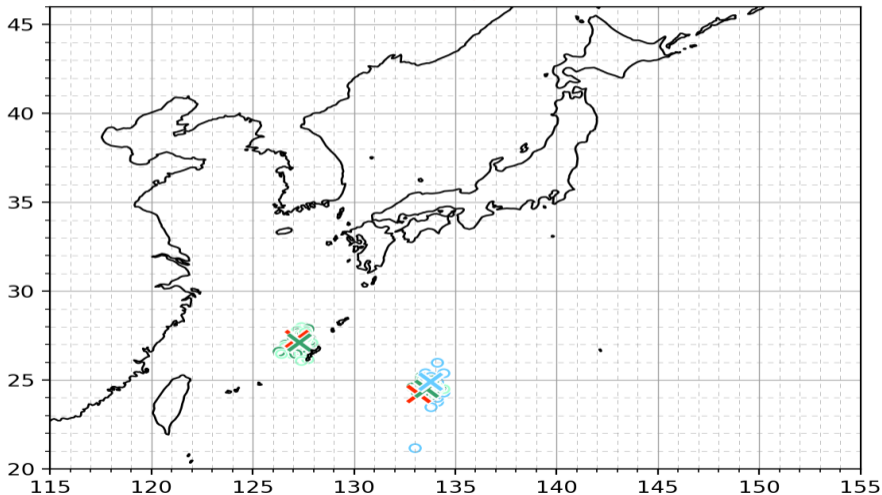
GrandEns (IFS/AIFS/GFS/AIGFS/GSM 06/26 00Z 予報)

Grand Ensemble

weather-models.info | ECMWF Open Data (CC BY 4.0),
NOAA data, 気象庁データ (ウェザーマップ社提供)

Init: 2026/06/25 18Z FT: 006h Valid: 2026/06/26 00Z

実際の進路予想は、気象庁の台風予報を利用してください



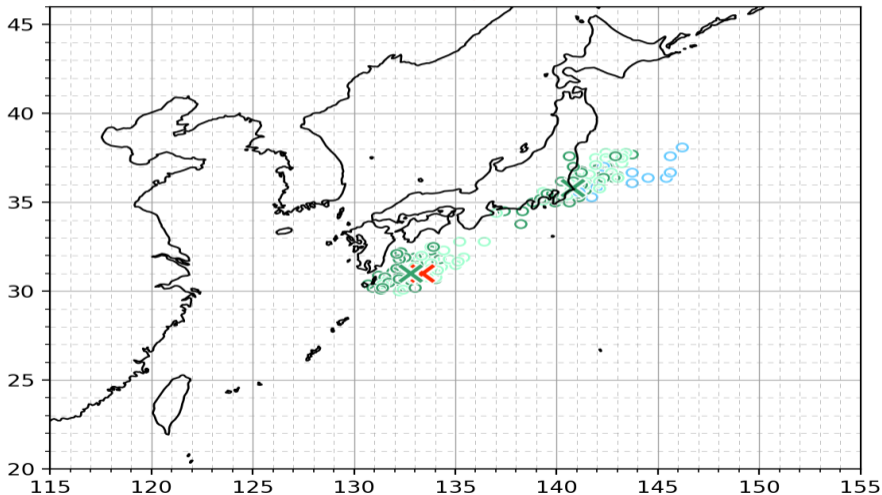
GrandEns (IFS/AIFS/GFS/AIGFS/GSM 06/27 00Z 予報)

Grand Ensemble

weather-models.info | ECMWF Open Data (CC BY 4.0),
NOAA data, 気象庁データ (ウェザーマップ社提供)

Init: 2026/06/25 18Z FT: 030h Valid: 2026/06/27 00Z

実際の進路予想は、気象庁の台風予報を利用してください



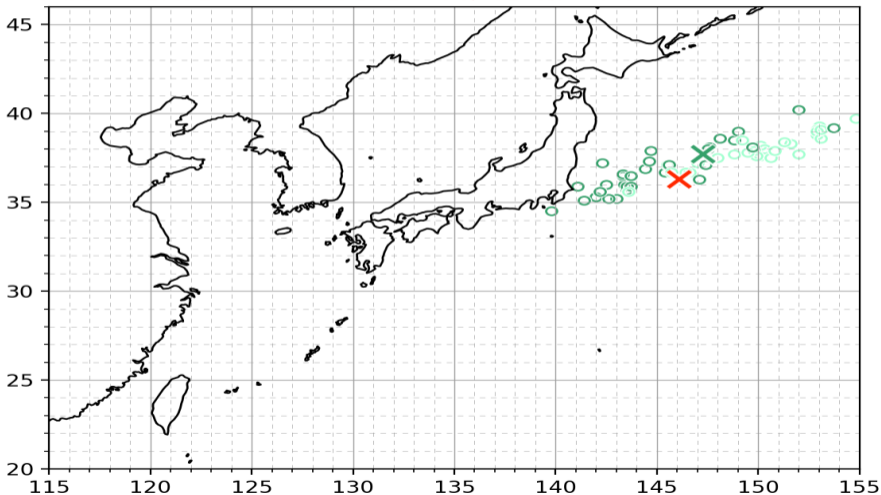
GrandEns (IFS/AIFS/GFS/AIGFS/GSM 06/28 00Z 予報)

Grand Ensemble

weather-models.info | ECMWF Open Data (CC BY 4.0),
NOAA data, 気象庁データ (ウェザーマップ社提供)

Init: 2026/06/25 18Z FT: 054h Valid: 2026/06/28 00Z

実際の進路予想は、気象庁の台風予報を利用してください



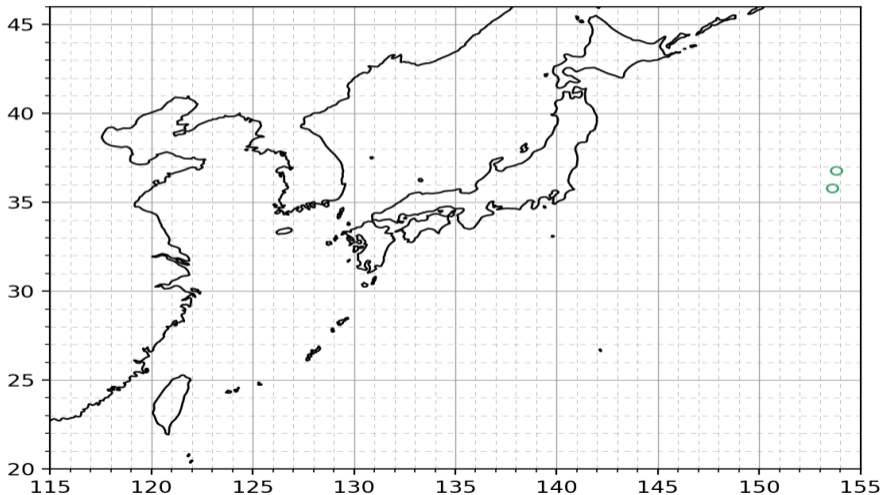
GrandEns (IFS/AIFS/GFS/AIGFS/GSM 06/29 00Z 予報)

Grand Ensemble

weather-models.info | ECMWF Open Data (CC BY 4.0),
NOAA data, 気象庁データ (ウェザーマップ社提供)

Init: 2026/06/25 18Z FT: 078h Valid: 2026/06/29 00Z

実際の進路予想は、気象庁の台風予報を利用してください



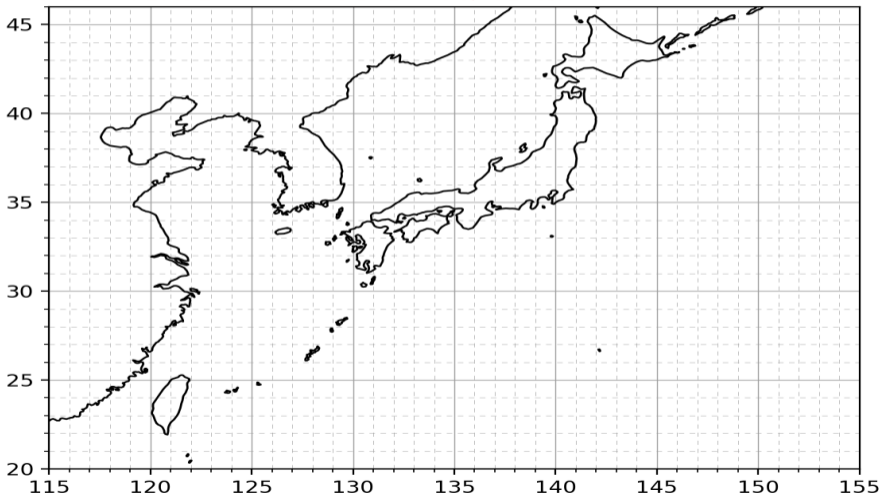
GrandEns (IFS/AIFS/GFS/AIGFS/GSM 06/30 00Z 予報)

Grand Ensemble

weather-models.info | ECMWF Open Data (CC BY 4.0),
NOAA data, 気象庁データ (ウェザーマップ社提供)

Init: 2026/06/25 18Z FT: 102h Valid: 2026/06/30 00Z

実際の進路予想は、気象庁の台風予報を利用してください



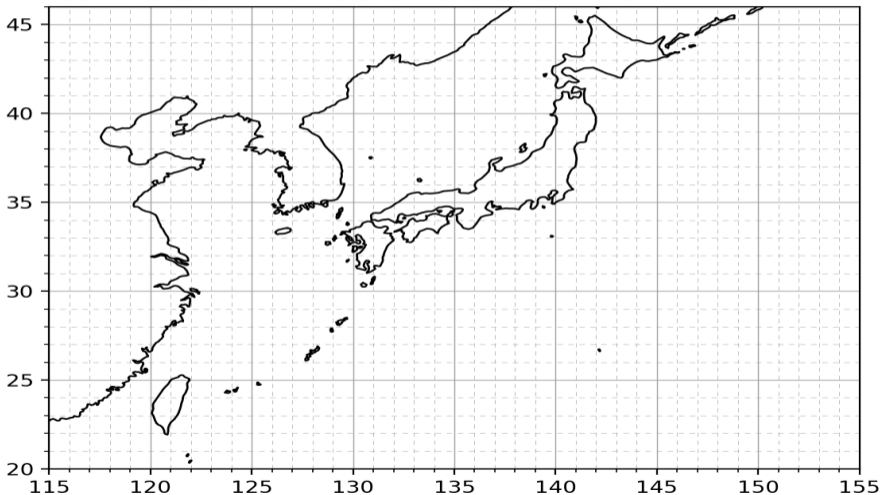
GrandEns (IFS/AIFS/GFS/AIGFS/GSM 07/01 00Z 予報)

Grand Ensemble

weather-models.info | ECMWF Open Data (CC BY 4.0),
NOAA data, 気象庁データ (ウェザーマップ社提供)

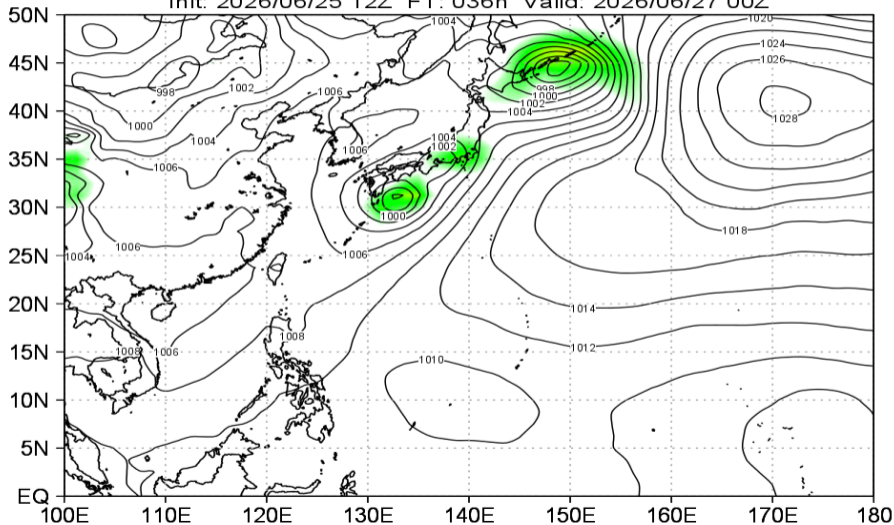
Init: 2026/06/25 18Z FT: 126h Valid: 2026/07/01 00Z

実際の進路予想は、気象庁の台風予報を利用してください



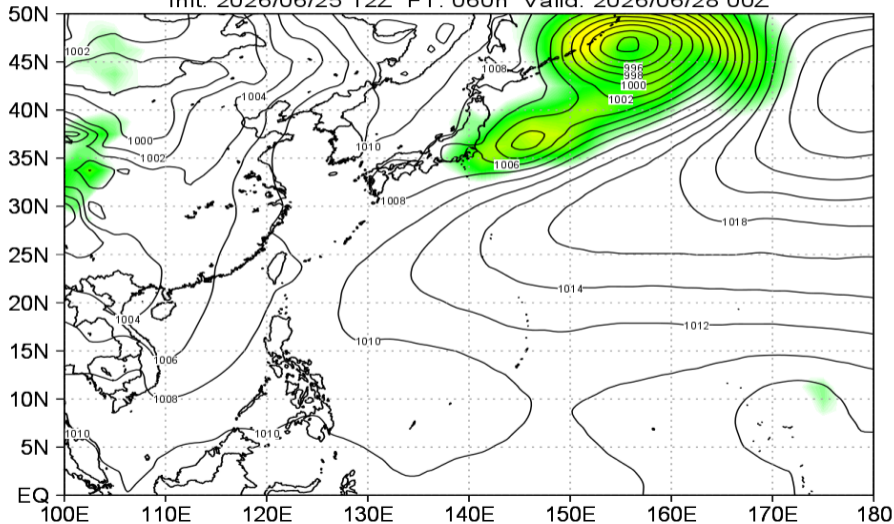
地上気圧 (GSMens 06/27 00Z 予報)

JMA GEPS MSLP (hPa) Mean&Spread
Init: 2026/06/25 12Z FT: 036h Valid: 2026/06/27 00Z



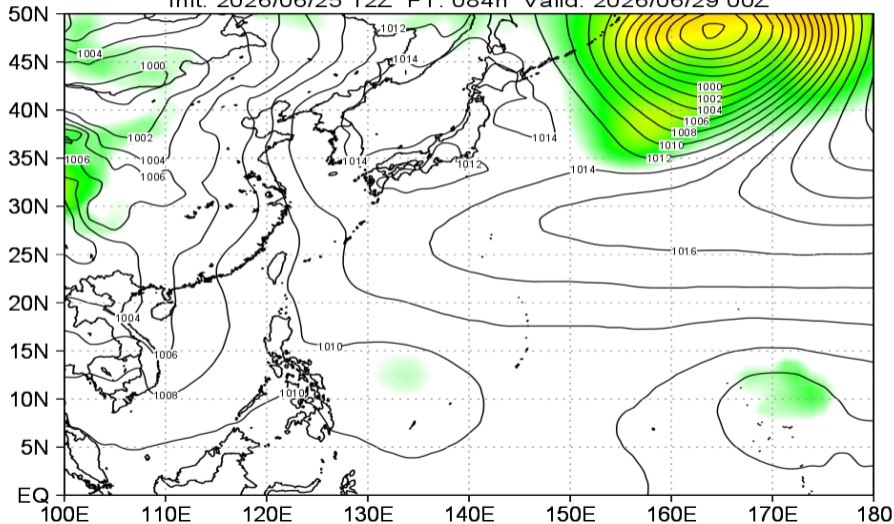
地上気圧 (GSMens 06/28 00Z 予報)

JMA GEPS MSLP (hPa) Mean&Spread
Init: 2026/06/25 12Z FT: 060h Valid: 2026/06/28 00Z



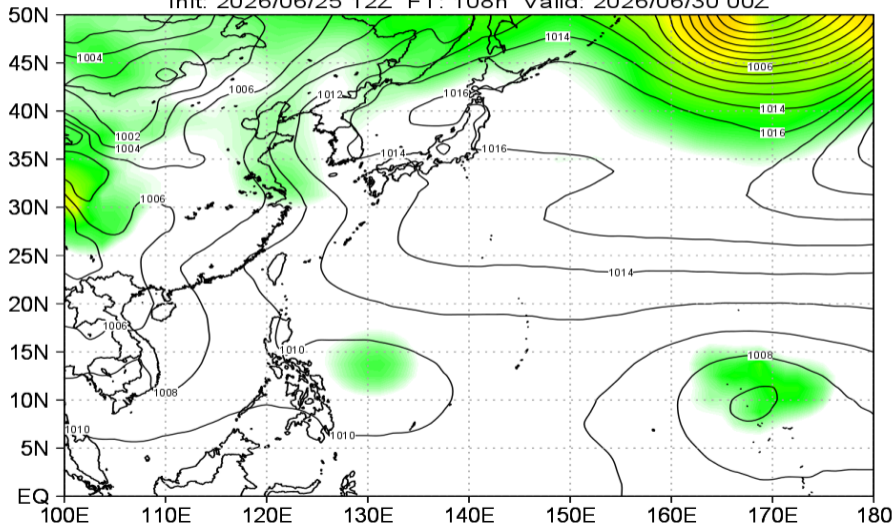
地上気圧 (GSMens 06/29 00Z 予報)

JMA GEPS MSLP (hPa) Mean&Spread
Init: 2026/06/25 12Z FT: 084h Valid: 2026/06/29 00Z



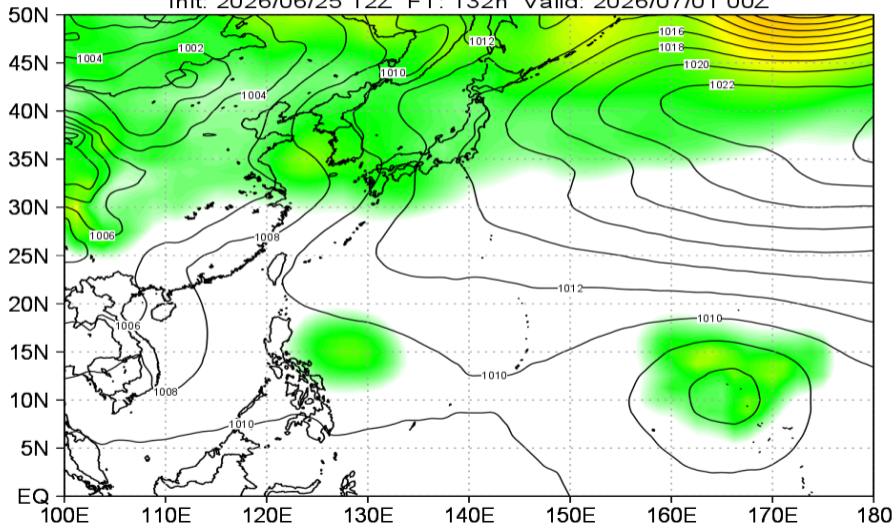
地上気圧 (GSMens 06/30 00Z 予報)

JMA GEPS MSLP (hPa) Mean&Spread
Init: 2026/06/25 12Z FT: 108h Valid: 2026/06/30 00Z



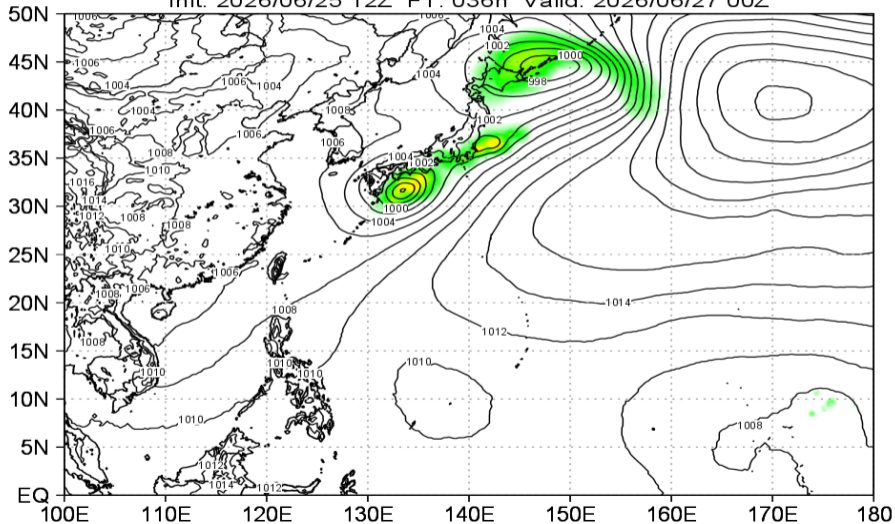
地上気圧 (GSMens 07/01 00Z 予報)

JMA GEPS MSLP (hPa) Mean&Spread
Init: 2026/06/25 12Z FT: 132h Valid: 2026/07/01 00Z



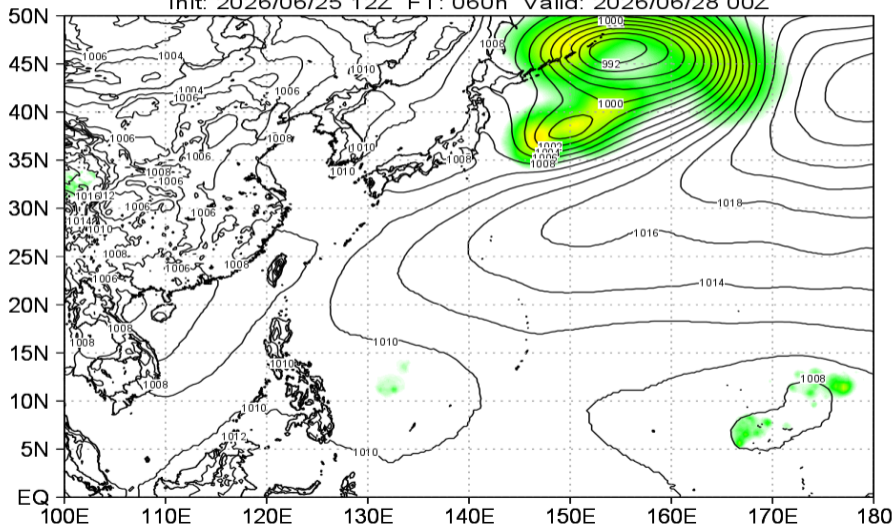
地上気圧 (IFSens 06/27 00Z 予報)

ECMWF IFS ENS MSLP (hPa) Mean&Spread
Init: 2026/06/25 12Z FT: 036h Valid: 2026/06/27 00Z



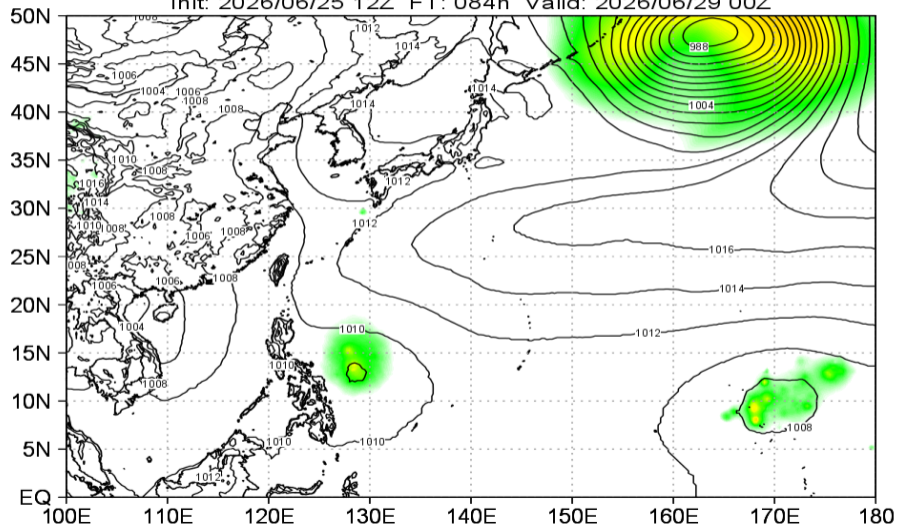
地上気圧 (IFSens 06/28 00Z 予報)

ECMWF IFS ENS MSLP (hPa) Mean&Spread
Init: 2026/06/25 12Z FT: 060h Valid: 2026/06/28 00Z



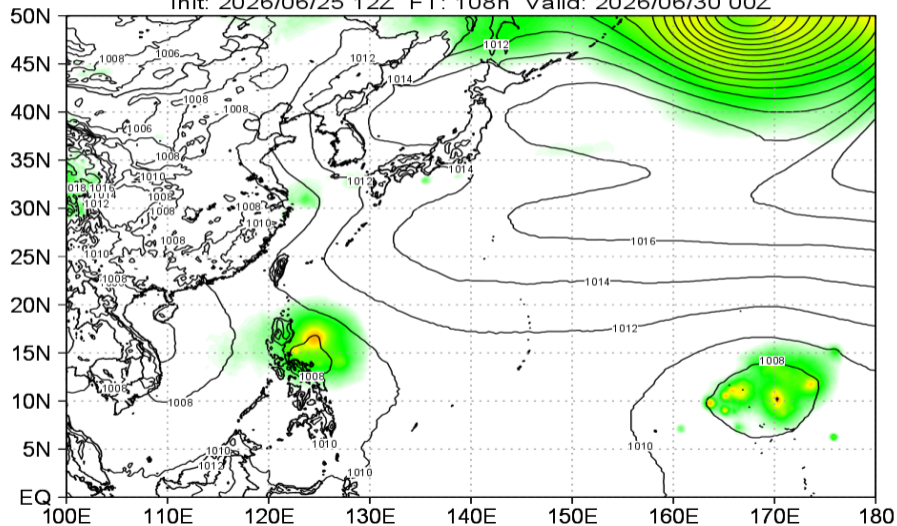
地上気圧 (IFSens 06/29 00Z 予報)

ECMWF IFS ENS MSLP (hPa) Mean&Spread
Init: 2026/06/25 12Z FT: 084h Valid: 2026/06/29 00Z



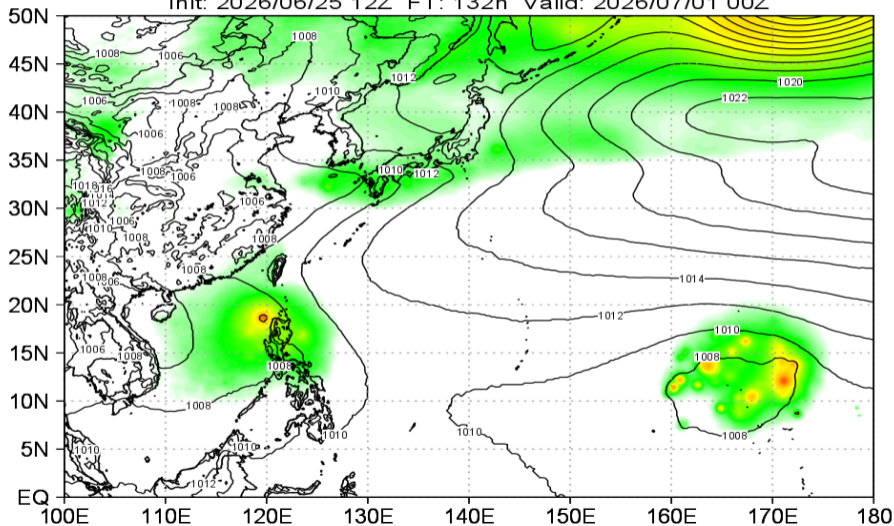
地上気圧 (IFSens 06/30 00Z 予報)

ECMWF IFS ENS MSLP (hPa) Mean&Spread
Init: 2026/06/25 12Z FT: 108h Valid: 2026/06/30 00Z



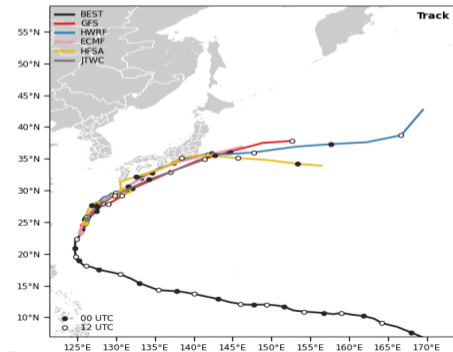
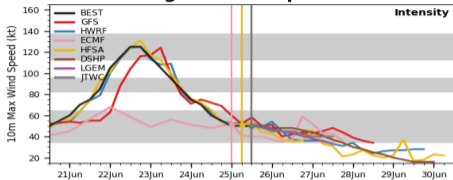
地上気圧 (IFSens 07/01 00Z 予報)

ECMWF IFS ENS MSLP (hPa) Mean&Spread
Init: 2026/06/25 12Z FT: 132h Valid: 2026/07/01 00Z

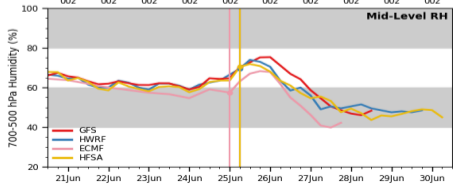
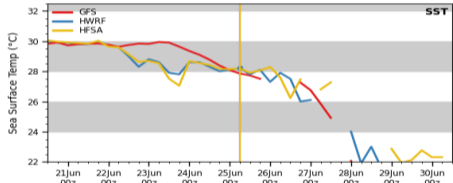
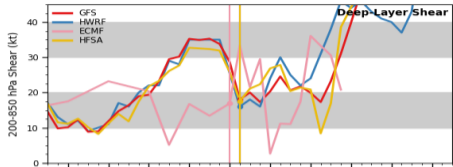


決定論マルチモデル予報 07W (06/25 12Z 初期値)

Multi-Model Diagnostic Comparison

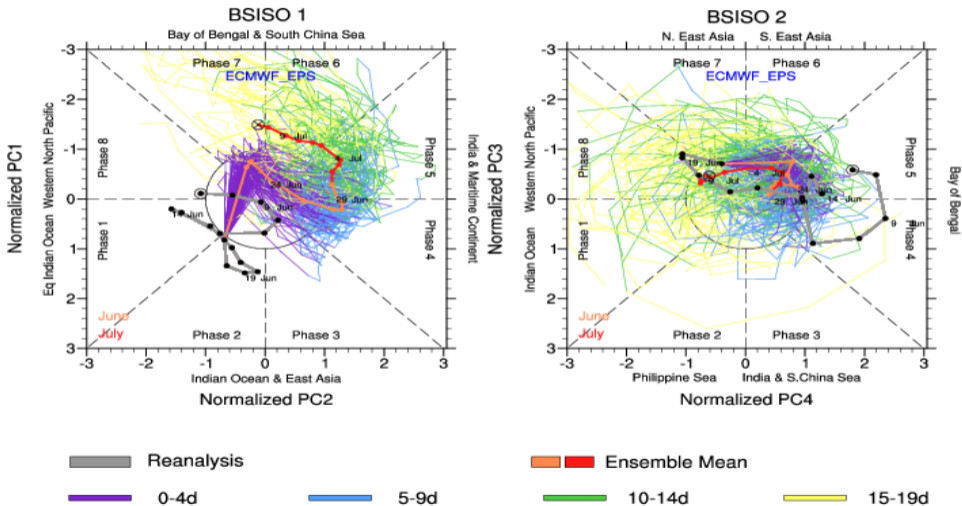


MEKKHALA - WP072026



BSISO 予測 (ECMWFens 06/22 初期)

BSISO Forecast for 22-June-2026 to 11-July-2026



BSISO 予測 (NCEPCFSens 06/22 初期)

BSISO Forecast for 22-June-2026 to 11-July-2026

