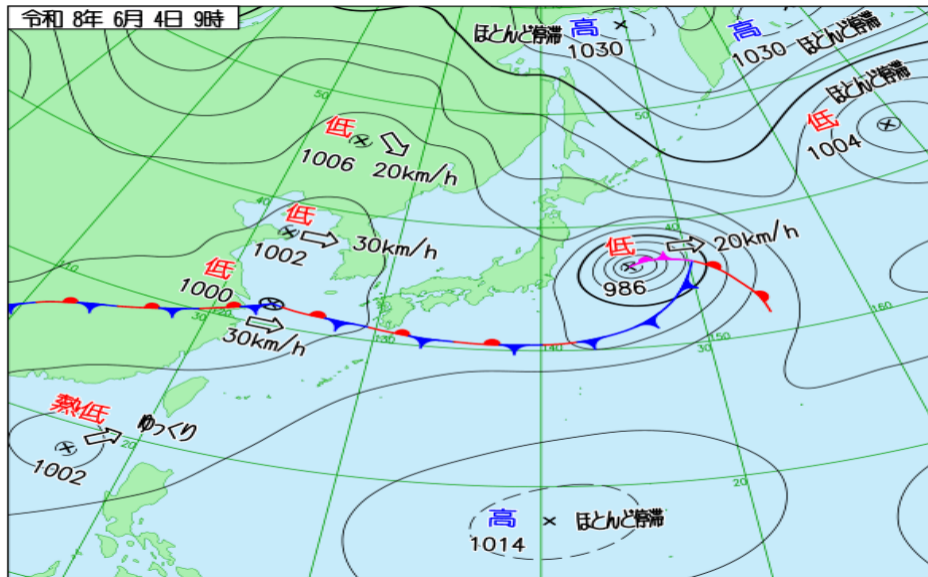
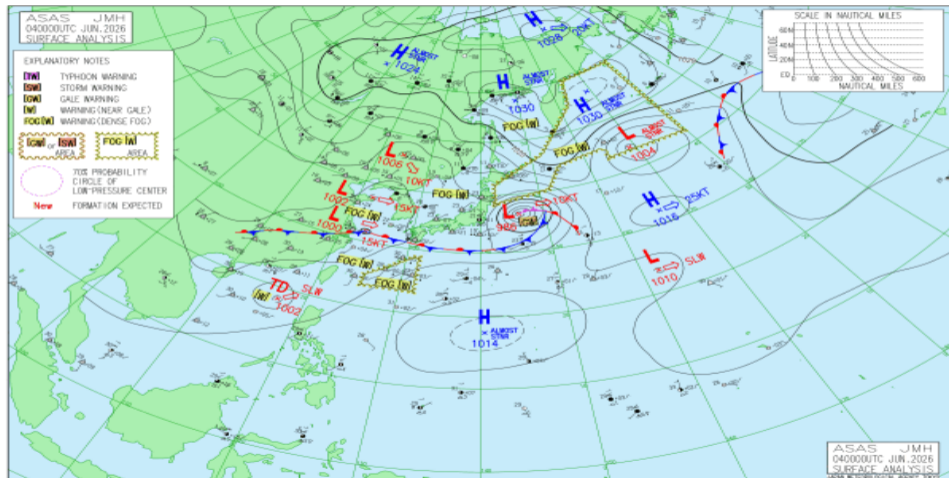


# JMA 日本域実況天気図 06/04 00Z

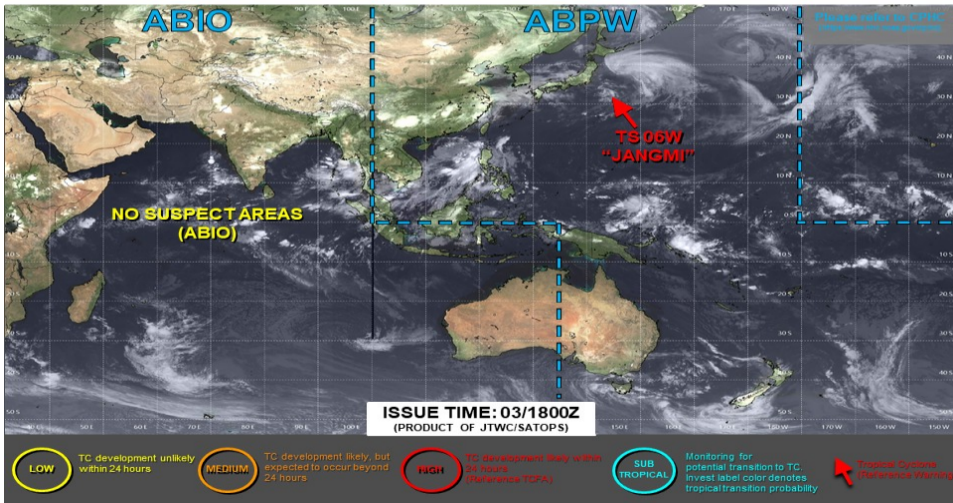


# JMA アジア太平洋域実況天気図 06/04 00Z

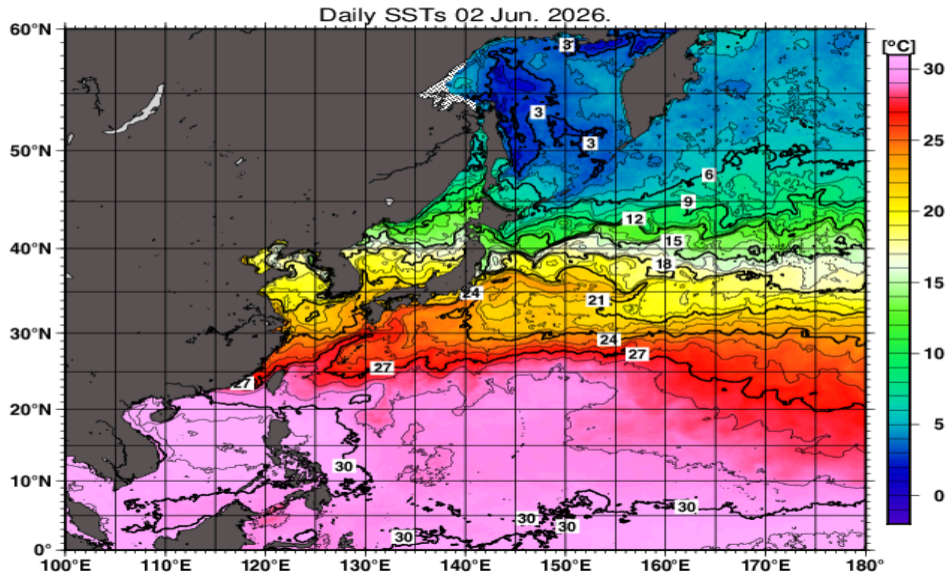




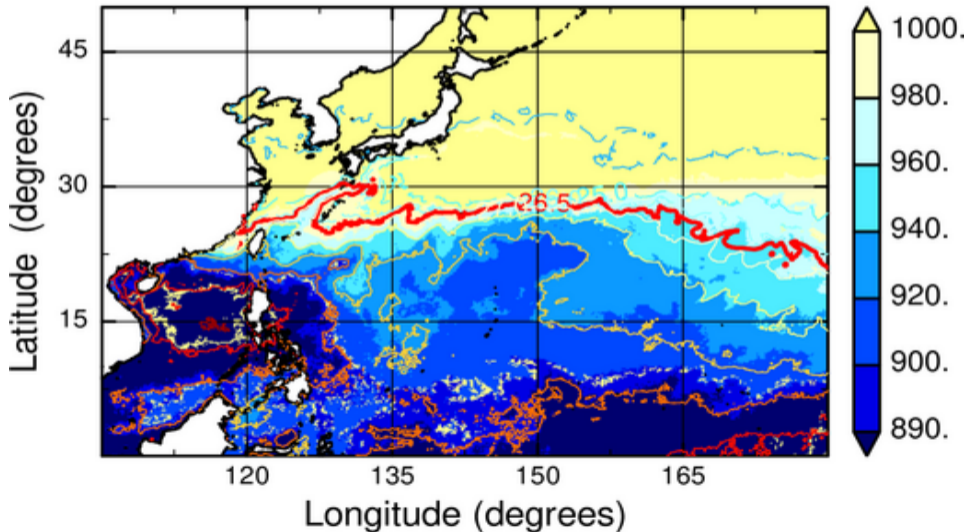
## JOINT TYPHOON WARNING CENTER



# JMA 海面水温解析



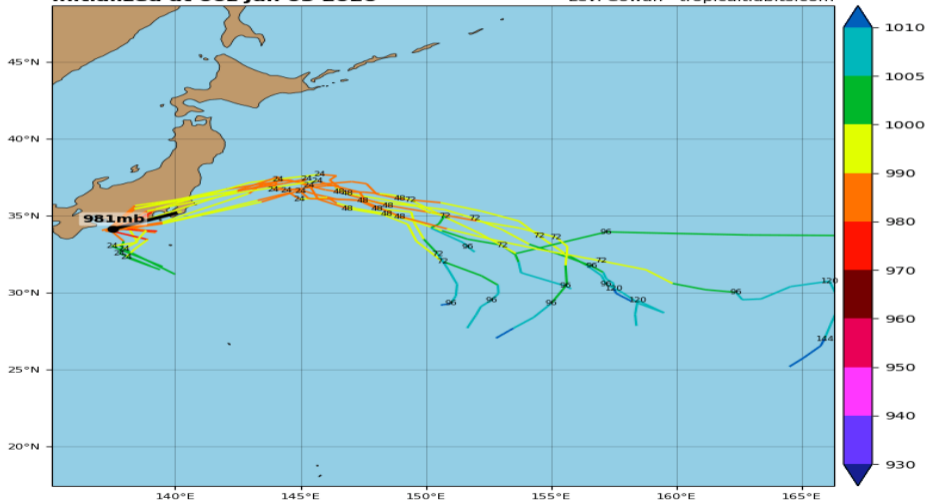
MPI<sub>BE</sub>, JMAGSM+HIMSST (mb) (00:00:00Z02Jun2026)



## 06W JANGMI - GEFS Tracks and Min. MSLP (hPa)

Initialized at 00z Jun 03 2026

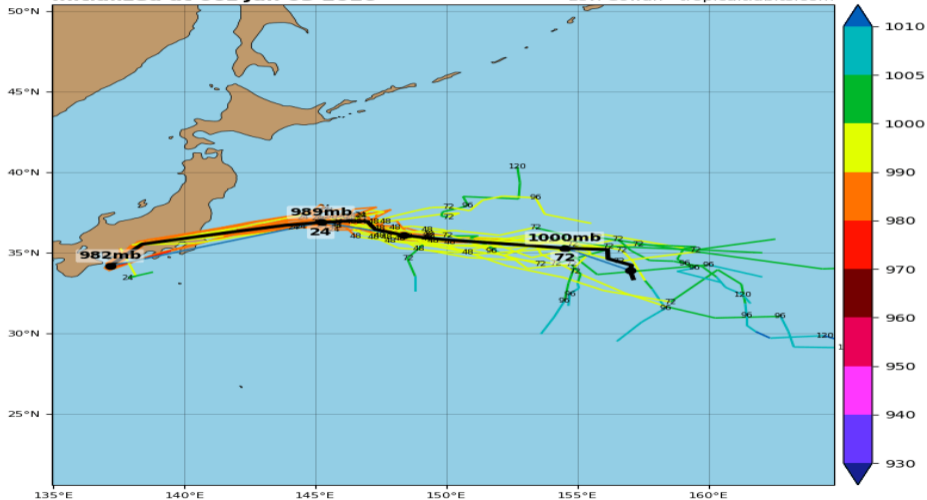
Levi Cowan - tropicaltidbits.com



## 06W JANGMI - GEPS Tracks and Min. MSLP (hPa)

Initialized at 00z Jun 03 2026

Levi Cowan - tropicaltidbits.com

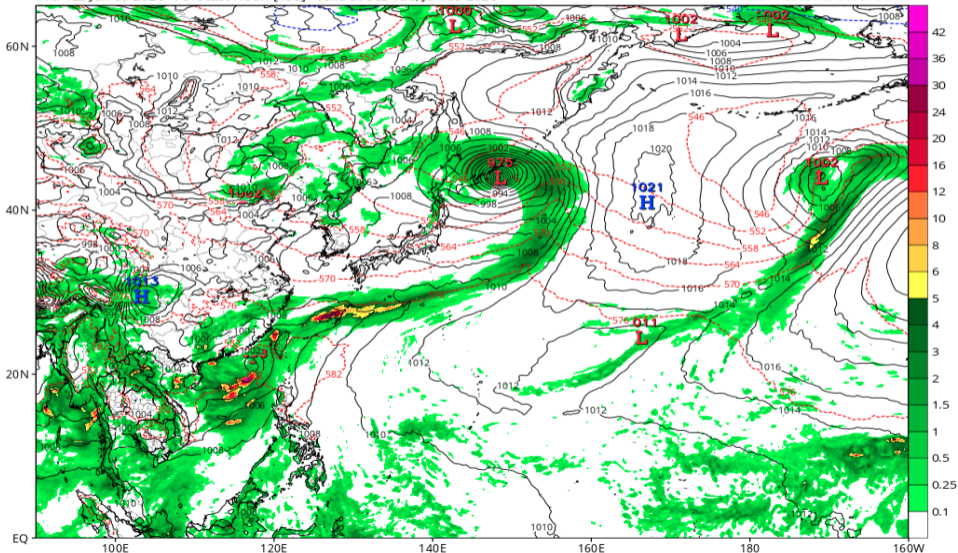


# 地上気圧配置 (GFS 06/04 00Z 予報)

GFS 6-hour Averaged Precip Rate (mm/hr), MSLP (hPa) & 1000-500mb Thickness (dam)

Init: 12z Jun 03 2026 Forecast Hour: [138] valid at 06z Tue, Jun 09 2026

TROPICALTIDBITS.COM



# 中層相对湿度 (GFS 06/04 00Z 予報)

GFS MSLP (mb), 700-300 hPa Relative Humidity (%), and 700-300 hPa Wind (kt)

Init: 12z Jun 03 2026 Forecast Hour: [132] valid at 00z Tue, Jun 09 2026

TROPICALTIDBITS.COM

